

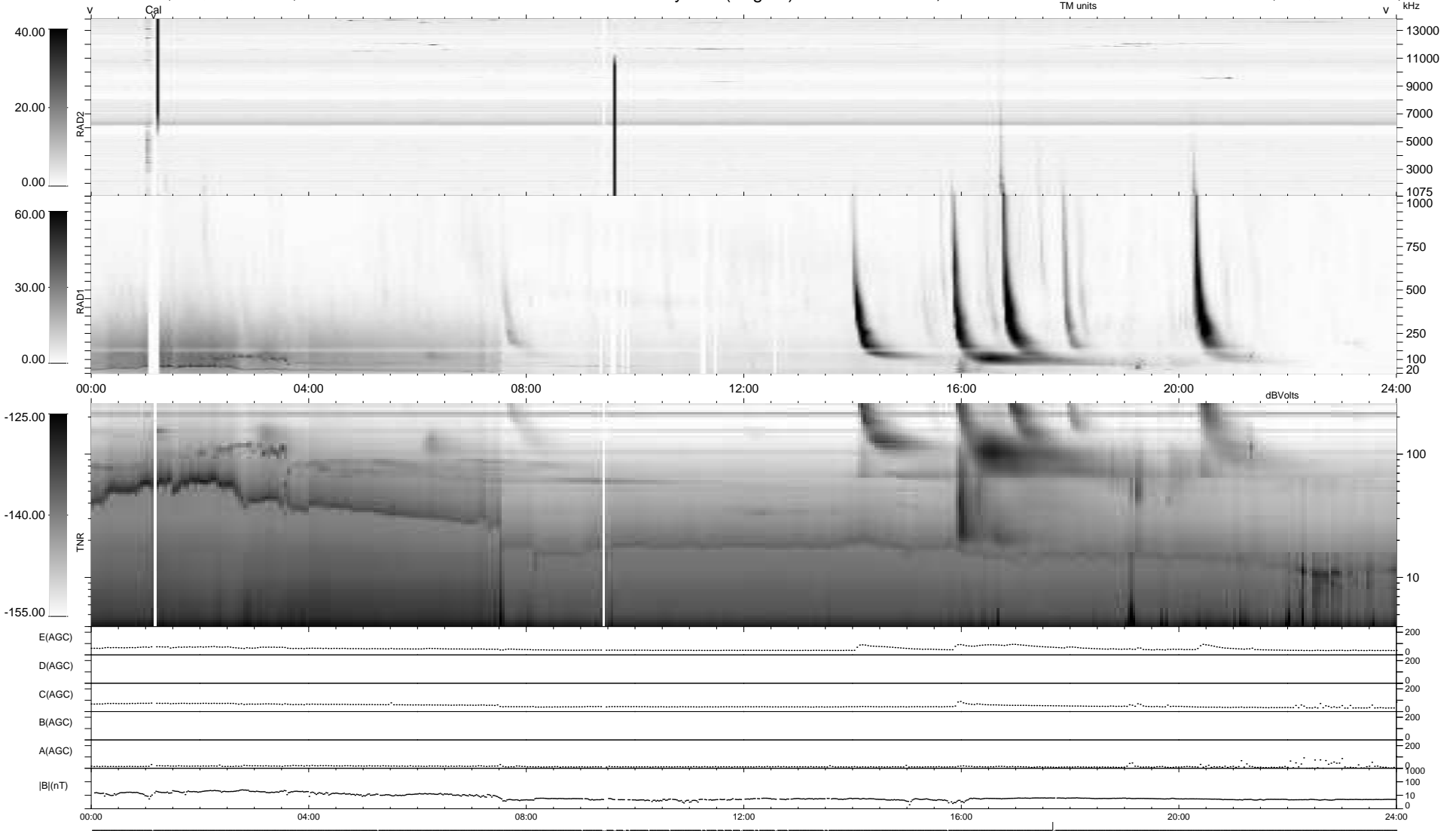
29 bad + 909 good MF/939MF projected (96%) - 1 missing MF
 Avg interval = 180 secs
 Re = -234.67 (213.55, -97.20, 4.75 GSE)

windlib 2.0b

LZ version = v01

WIND/WAVES Summary Plot (Page 1) for 08-DEC-2013, DOY = 342

DAILY 2013-12-09 05:46:04
 Re = 233.29 (212.32, -96.58, 4.08 GSE)



RAD2
 Antenna Ey
 Mode LIN(1)
 SUM/SEP SEP
 Toggle OFF
 RAD1
 Antenna Ex
 Mode LIS(2,4)
 SUM/SEP SUM
 Toggle OFF
 TNR
 Antenna ExEy
 Mode A-32
 Sweep ACE