

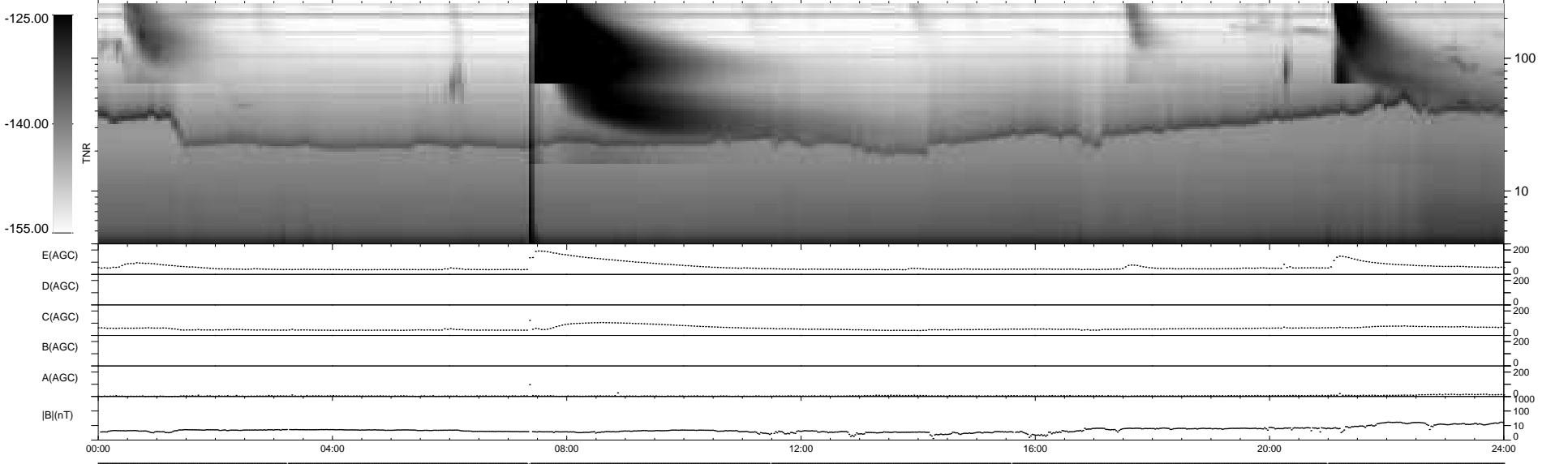
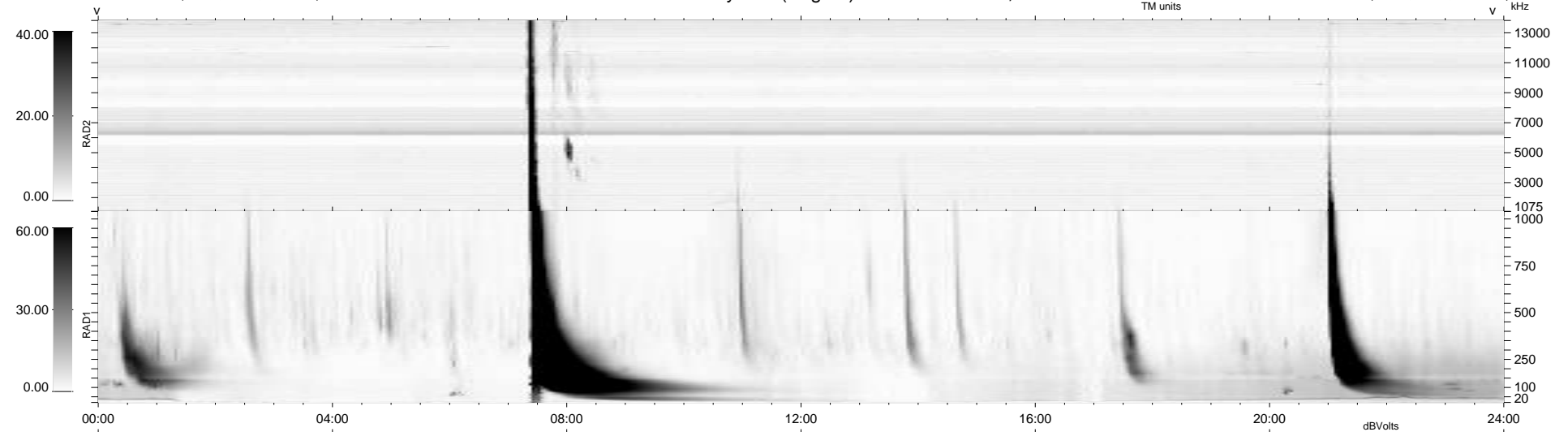
6 bad + 934 good MF/940MF projected (99%) - 0 missing MFs
 Avg interval = 180 secs
 Re = -236.05 (214.80, -97.73, 5.42 GSE)

windlib 2.0b

LZ version = v01

WIND/WAVES Summary Plot (Page 1) for 07-DEC-2013, DOY = 341

DAILY 2013-12-08 22:46:04
 Re = 234.68 (213.56, -97.20, 4.75 GSE)



RAD2
 Antenna Ey
 Mode LIN(1)
 SUM/SEP SEP
 Toggle OFF
 RAD1
 Antenna Ex
 Mode LIS(2,4)
 SUM/SEP SUM
 Toggle OFF
 TNR
 Antenna ExEy
 Mode A-32
 Sweep ACE