

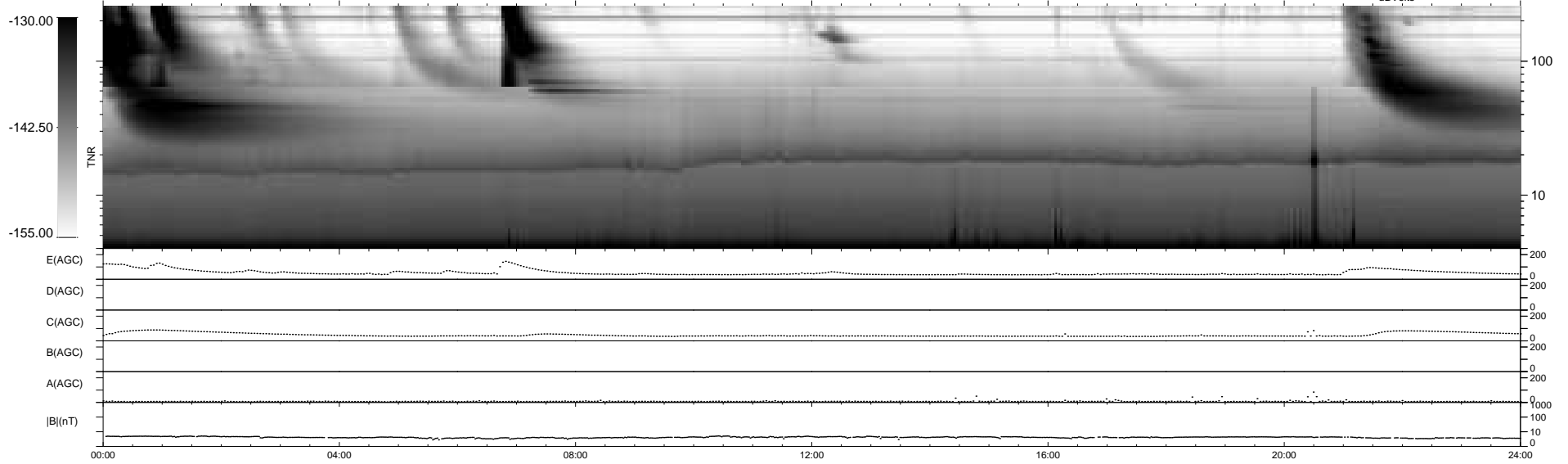
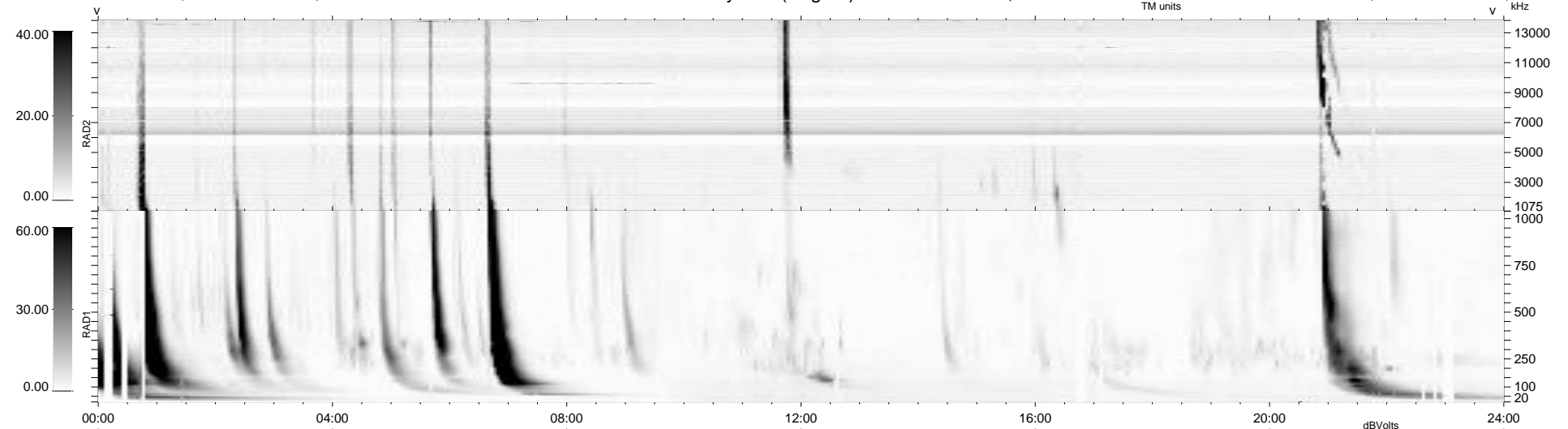
34 bad + 905 good MF/939MF projected (96%) - 0 missing MFs
 Avg interval = 180 secs
 Re = 238.68 (217.31, -98.49, 6.72 GSE)

windlib 2.0b

LZ version = v02

WIND/WAVES Summary Plot (Page 1) for 05-DEC-2013, DOY = 339

DAILY 2013-12-09 10:46:04
 Re = 237.40 (216.07, -98.16, 6.08 GSE)



RAD2
 Antenna Ey
 Mode LIN(1)
 SUM/SEP SEP
 Toggle OFF

RAD1
 Antenna Ex
 Mode LIS(2,4)
 SUM/SEP SUM
 Toggle OFF

TNR
 Antenna ExEy
 Mode A-32
 Sweep ACE