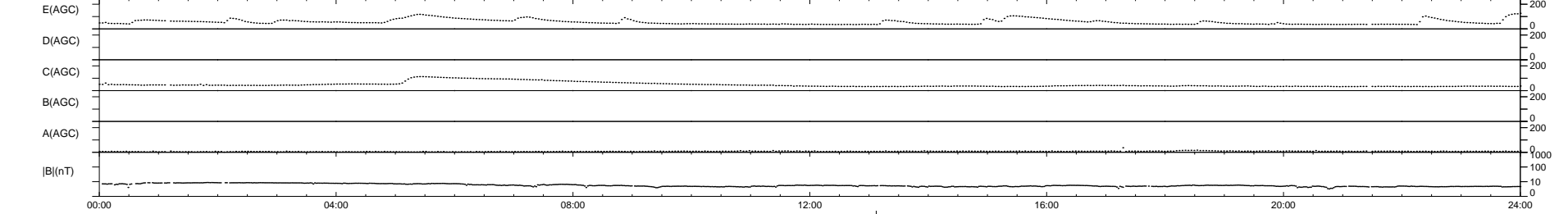
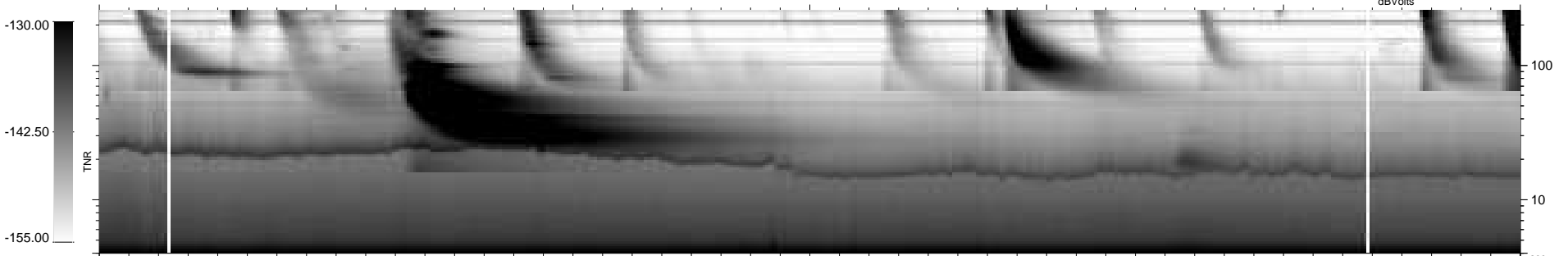
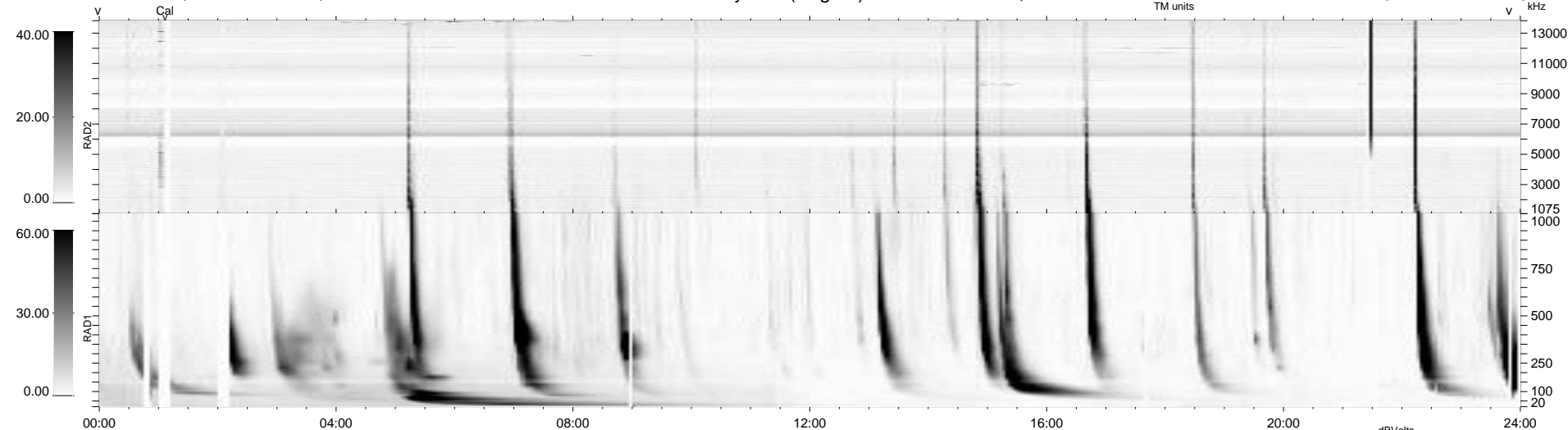


34 bad + 904 good MF/939MF projected (96%) - 1 missing MF
 Avg interval = 180 secs
 Re = 239.92 (218.55, -98.71, 7.35 GSE)

windlib 2.0b LZ version = v01
 DAILY 2013-12-05 09:46:03
 Re = 238.69 (217.32, -98.49, 6.72 GSE)

WIND/WAVES Summary Plot (Page 1) for 04-DEC-2013, DOY = 338



RAD2
 Antenna Ey
 Mode LIN(1)
 SUM/SEP SEP
 Toggle OFF

RAD1
 Antenna Ex
 Mode LIS(2,4)
 SUM/SEP SUM
 Toggle OFF

TNR
 Antenna ExEy
 Mode A-32
 Sweep ACE