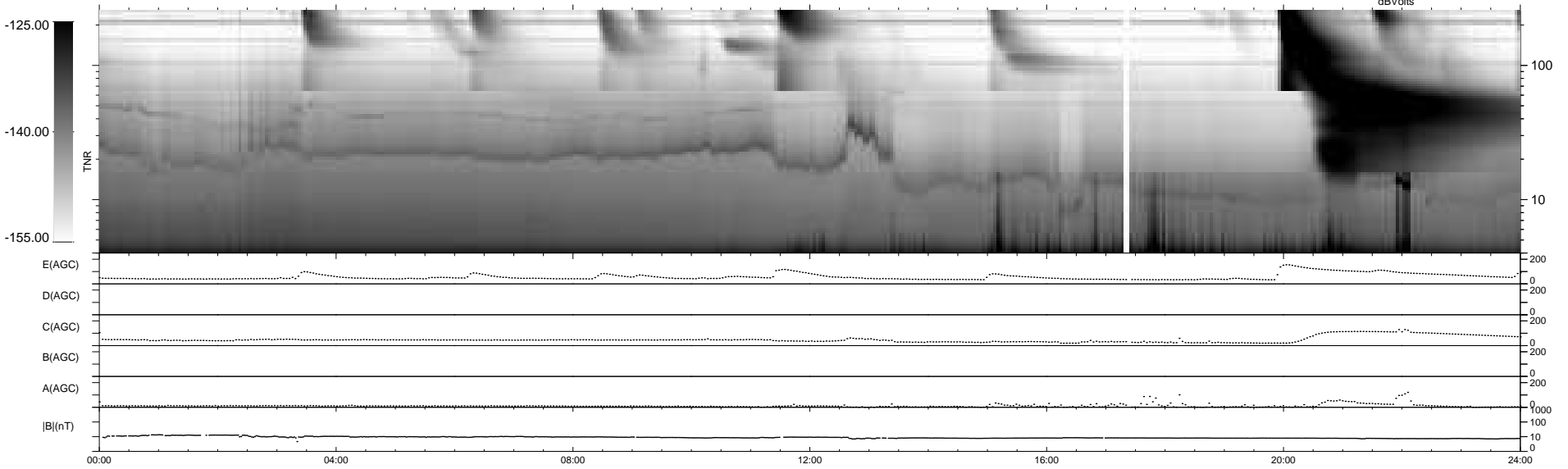
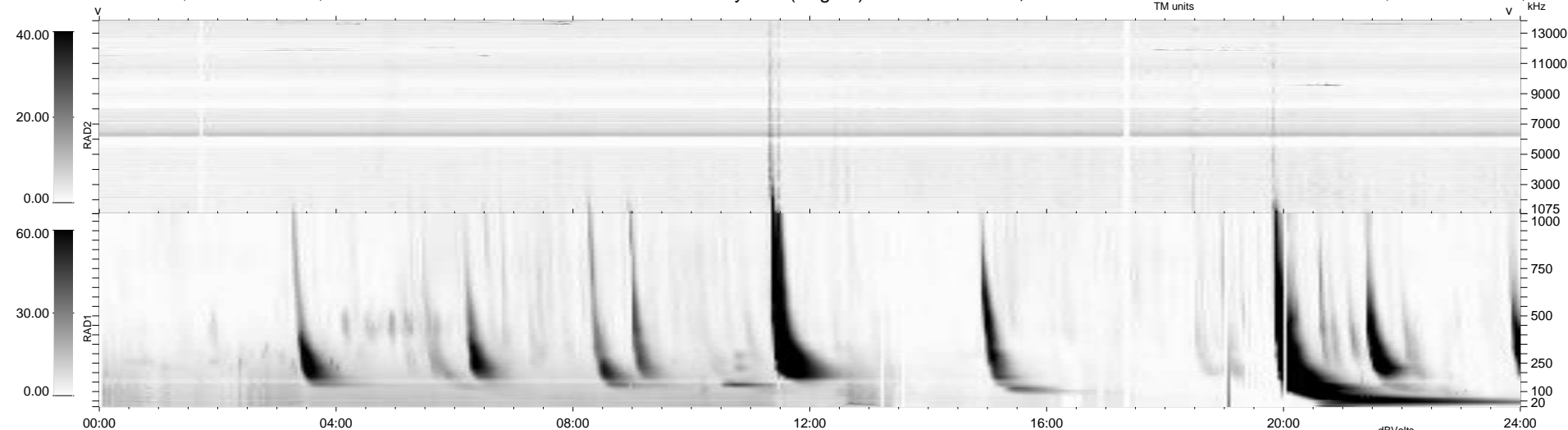


34 bad + 905 good MF/939MF projected (96%) - 0 missing MFs
 Avg interval = 180 secs
 Re = - 243.26 (222.17, -98.64, 9.19 GSE)

windlib 2.0b LZ version = v02
 DAILY 2013-12-03 11:46:03
 Re = 242.23 (221.00, -98.80, 8.59 GSE)

WIND/WAVES Summary Plot (Page 1) for 01-DEC-2013, DOY = 335



RAD2 Antenna Ey
 Mode LIN(1)
 SUM/SEP SEP
 Toggle OFF
 RAD1 Antenna
 Mode
 SUM/SEP
 Toggle
 TNR Antenna ExEy
 Mode A-32
 Sweep ACE