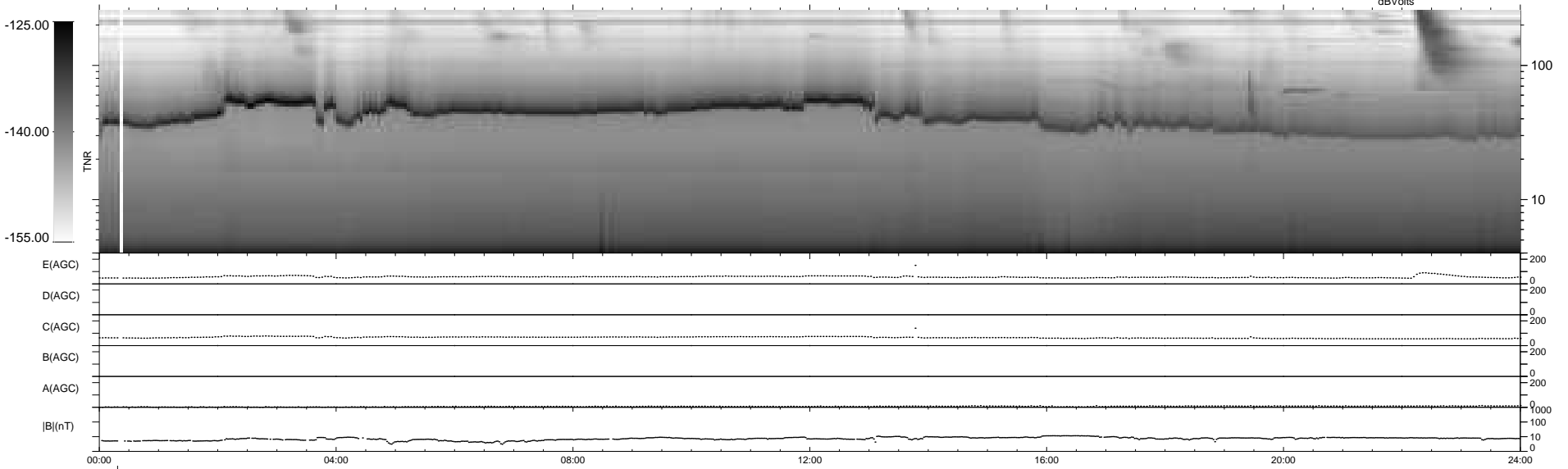
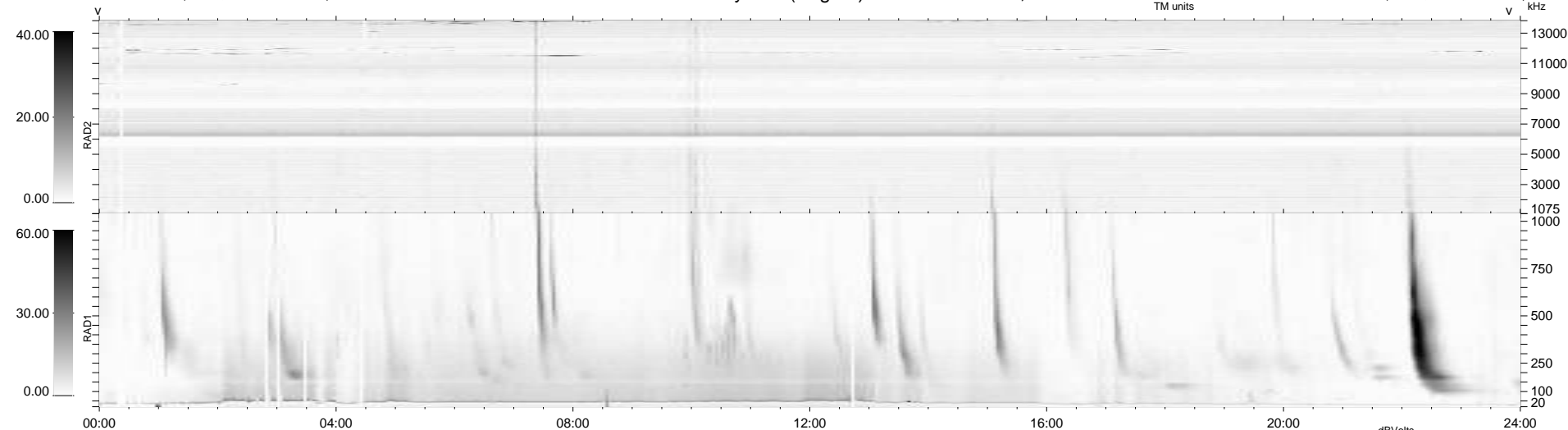


25 bad + 914 good MF/940MF projected (97%) - 1 missing MF
 Avg interval = 180 secs
 Re = 245.14 (224.50, -97.91, 10.36 GSE)

windlib 2.0b LZ version = v01
 DAILY 2013-11-30 10:46:04
 Re = 244.24 (223.35, -98.35, 9.79 GSE)

WIND/WAVES Summary Plot (Page 1) for 29-NOV-2013, DOY = 333



RAD2 Antenna Ey
 Mode LIN(1)
 SUM/SEP SEP
 Toggle OFF
 RAD1 Antenna Ex
 Mode LIS(2,4)
 SUM/SEP SUM
 Toggle OFF
 TNR Antenna ExEy
 Mode A-32
 Sweep ACE