

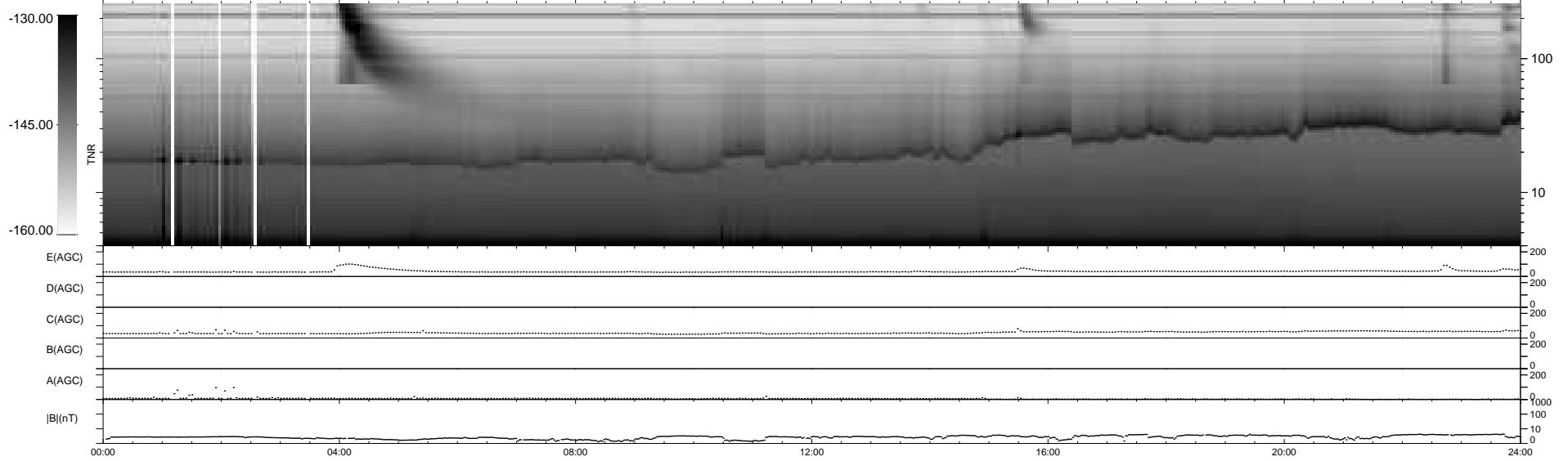
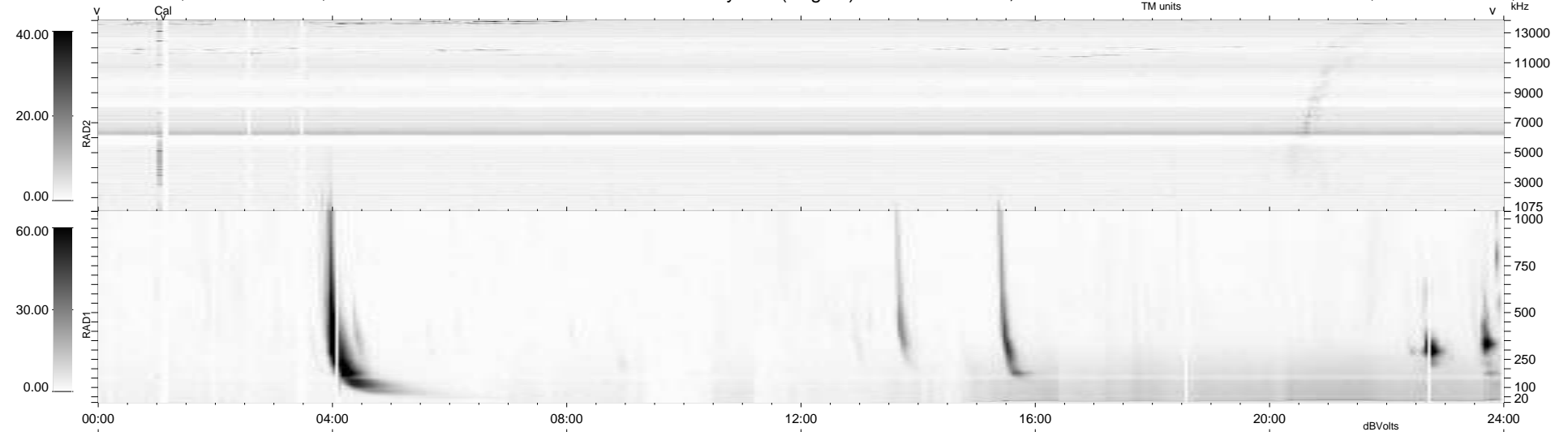
22 bad + 917 good MF/939MF projected (97%) - 0 missing MFs  
 Avg interval = 180 secs  
 Re = 247.49 (227.92, -95.71, 12.04 GSE)

windlib 2.0b

LZ version = v01

### WIND/WAVES Summary Plot (Page 1) for 26-NOV-2013, DOY = 330

DAILY 2013-11-27 07:46:03  
 Re = 246.77 (226.79, -96.59, 11.49 GSE)



RAD2  
 Antenna Ey  
 Mode LIN(1)  
 SUM/SEP SEP  
 Toggle OFF

RAD1  
 Antenna Ex  
 Mode LIS(2,4)  
 SUM/SEP SUM  
 Toggle OFF

TNR  
 Antenna ExEy  
 Mode A-32  
 Sweep ACE