

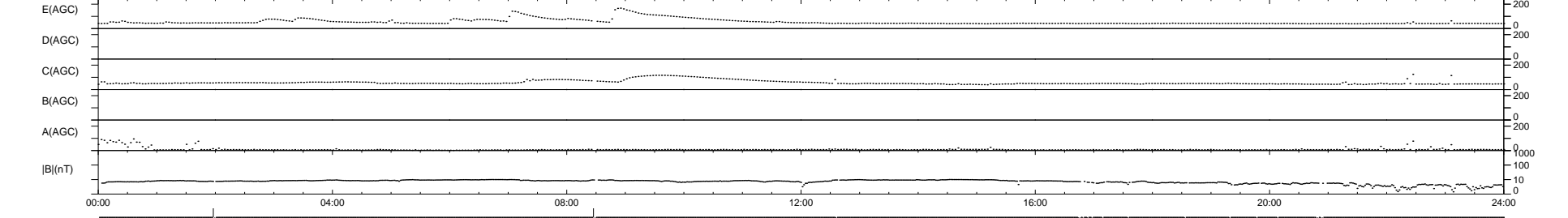
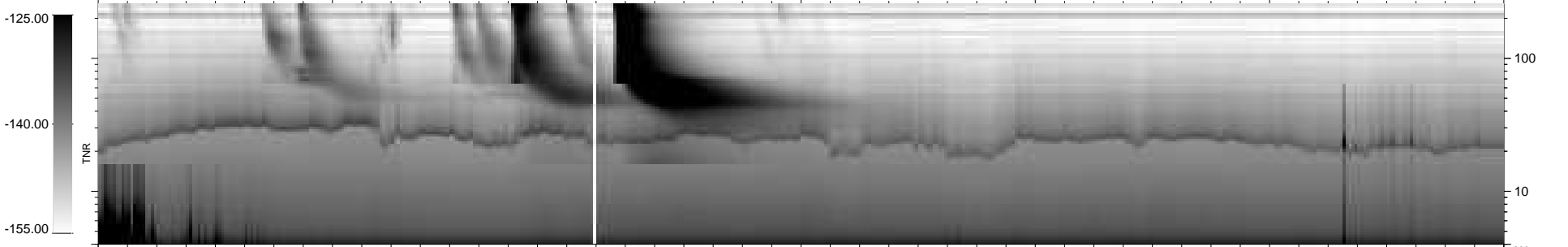
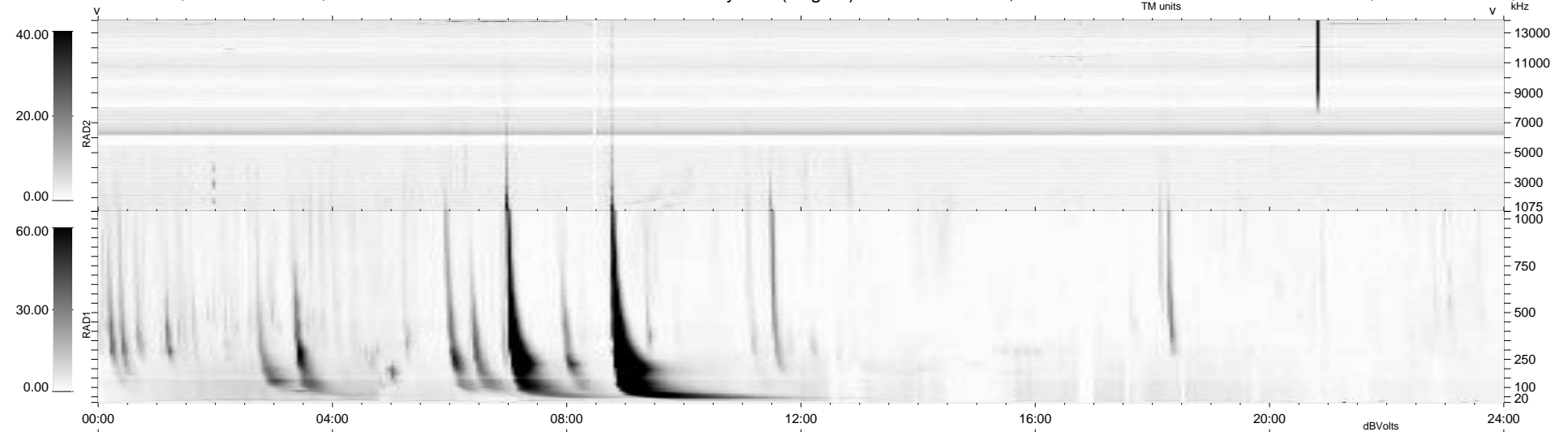
18 bad + 919 good MF/939MF projected (97%) - 2 missing MFs
 Avg interval = 180 secs
 Re = 249.42 (231.35, -92.18, 13.63 GSE)

windlib 2.0b

LZ version = v01

WIND/WAVES Summary Plot (Page 1) for 23-NOV-2013, DOY = 327

DAILY 2013-11-24 20:46:04
 Re = 248.82 (230.21, -93.49, 13.11 GSE)



```

RAD2
Antenna Ey .....
Mode LIN(1) .....
SUM/SEP SEP .....
Toggle OFF .....

RAD1
Antenna Ex .....
Mode LIS(2,4) .....
SUM/SEP SUM .....
Toggle OFF .....

TNR
Antenna ExEy .....
Mode A-32 .....
Sweep ACE .....
  
```