

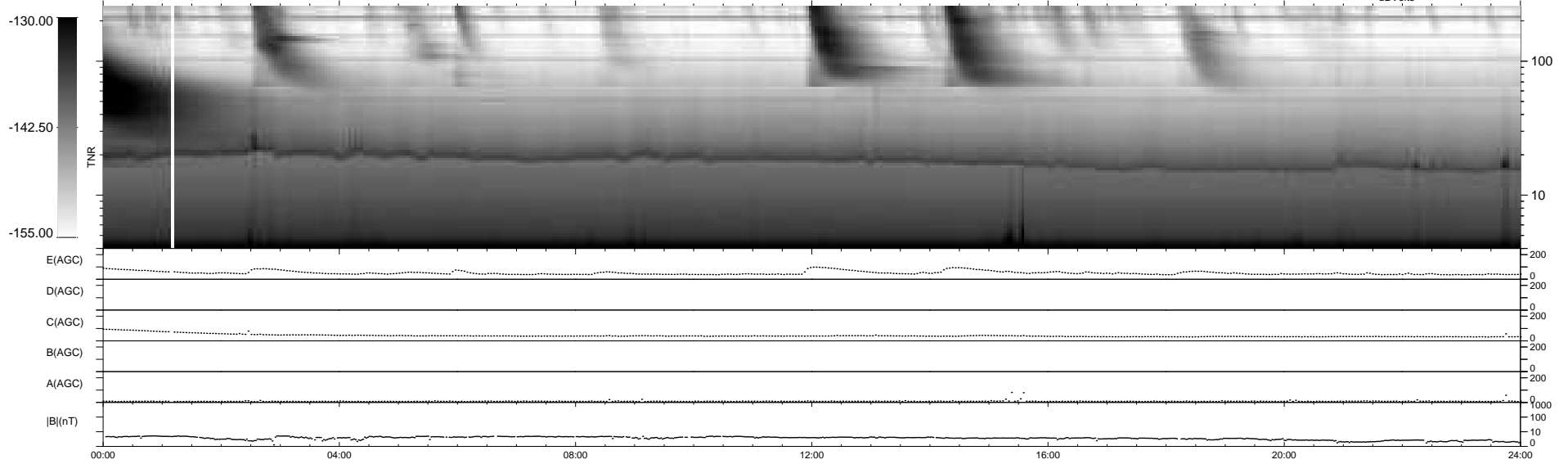
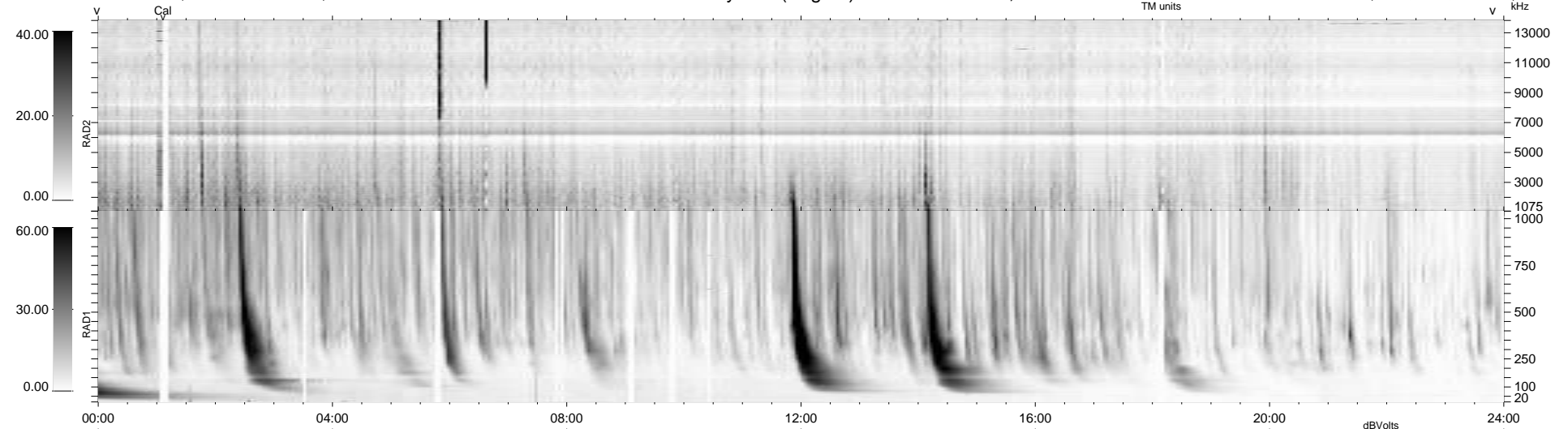
21 bad + 918 good MF/939MF projected (97%) - 0 missing MFs
 Avg interval = 180 secs
 Re = 251.08 (234.89, -87.42, 15.11 GSE)

windlib 2.0b

LZ version = v01

WIND/WAVES Summary Plot (Page 1) for 20-NOV-2013, DOY = 324

DAILY 2013-11-25 14:46:04
 Re = 250.55 (233.70, -89.13, 14.63 GSE)



```

RAD2
Antenna Ey .....
Mode LIN(1) .....
SUM/SEP SEP .....
Toggle OFF .....

RAD1
Antenna Ex .....
Mode LIS(2,4) .....
SUM/SEP SUM .....
Toggle OFF .....

TNR
Antenna ExEy .....
Mode A-32 .....
Sweep ACE .....
  
```