

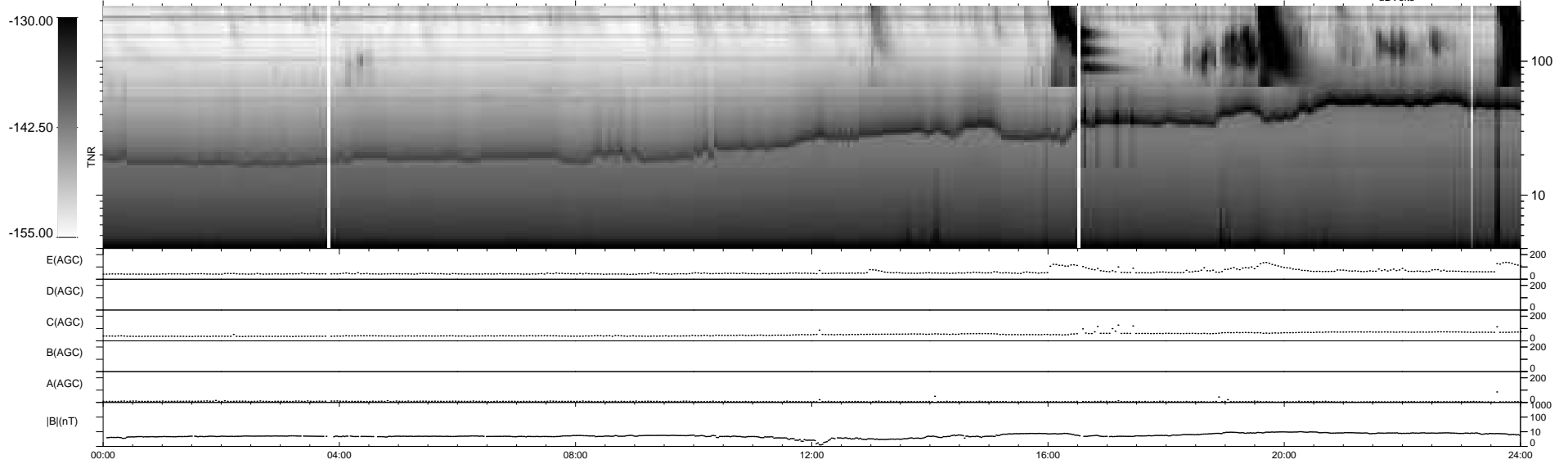
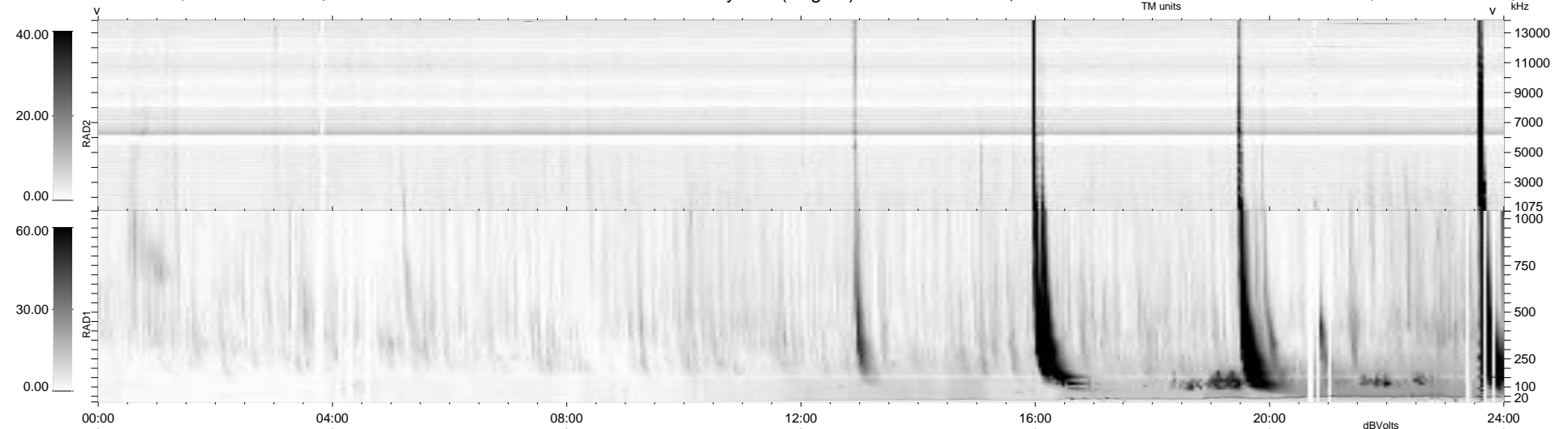
32 bad + 907 good MF/939MF projected (96%) - 0 missing MFs
 Avg interval = 180 secs
 Re = 253.72 (241.07, -77.20, 17.30 GSE)

windlib 2.0b

LZ version = v01

WIND/WAVES Summary Plot (Page 1) for 15-NOV-2013, DOY = 319

DAILY 2013-11-16 16:46:03
 Re = 253.19 (239.82, -79.42, 16.90 GSE)



RAD2
 Antenna Ey
 Mode LIN(1)
 SUM/SEP SEP
 Toggle OFF

RAD1
 Antenna Ex
 Mode LIS(2,4)
 SUM/SEP SUM
 Toggle OFF

TNR
 Antenna ExEy
 Mode A-32
 Sweep ACE