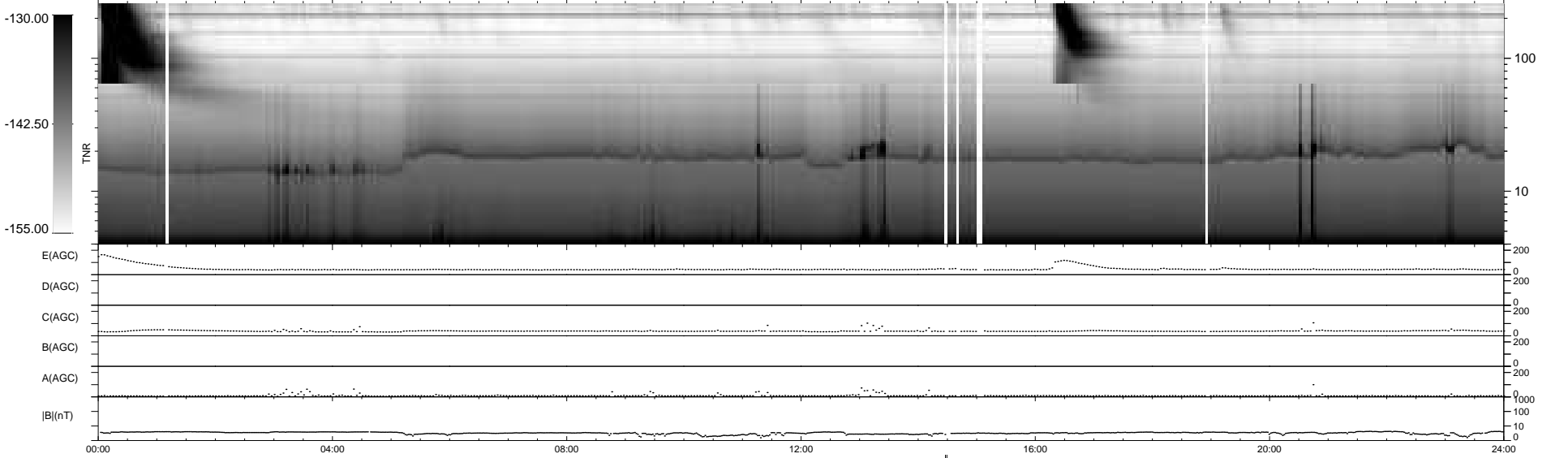
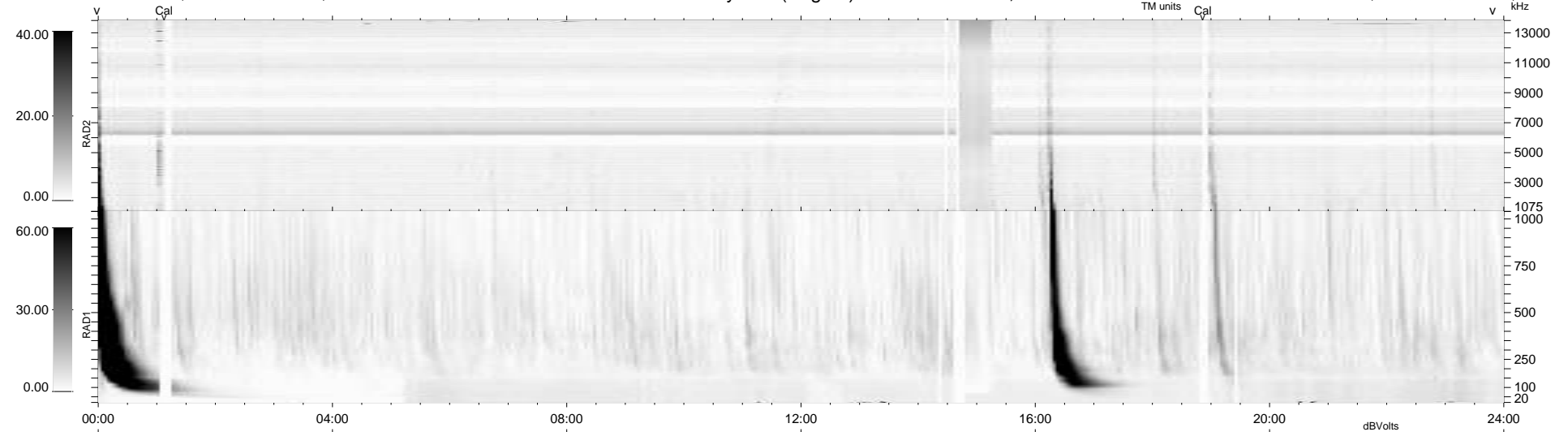


9 bad + 929 good MF/940MF projected (98%) - 2 missing MFs
 Avg interval = 180 secs
 Re = 254.25 (242.33, -74.88, 17.68 GSE)

windlib 2.0b LZ version = v01
 DAILY 2013-11-15 09:46:03
 Re = 253.72 (241.08, -77.18, 17.30 GSE)

WIND/WAVES Summary Plot (Page 1) for 14-NOV-2013, DOY = 318



```

RAD2
Antenna Ey .....
Mode LIN(1) .....
SUM/SEP SEP .....
Toggle OFF .....

RAD1
Antenna Ex .....
Mode LIS(2,4) .....
SUM/SEP SUM .....
Toggle OFF .....

TNR
Antenna ExEy .....
Mode A-32 .....
Sweep ACE .....
  
```