

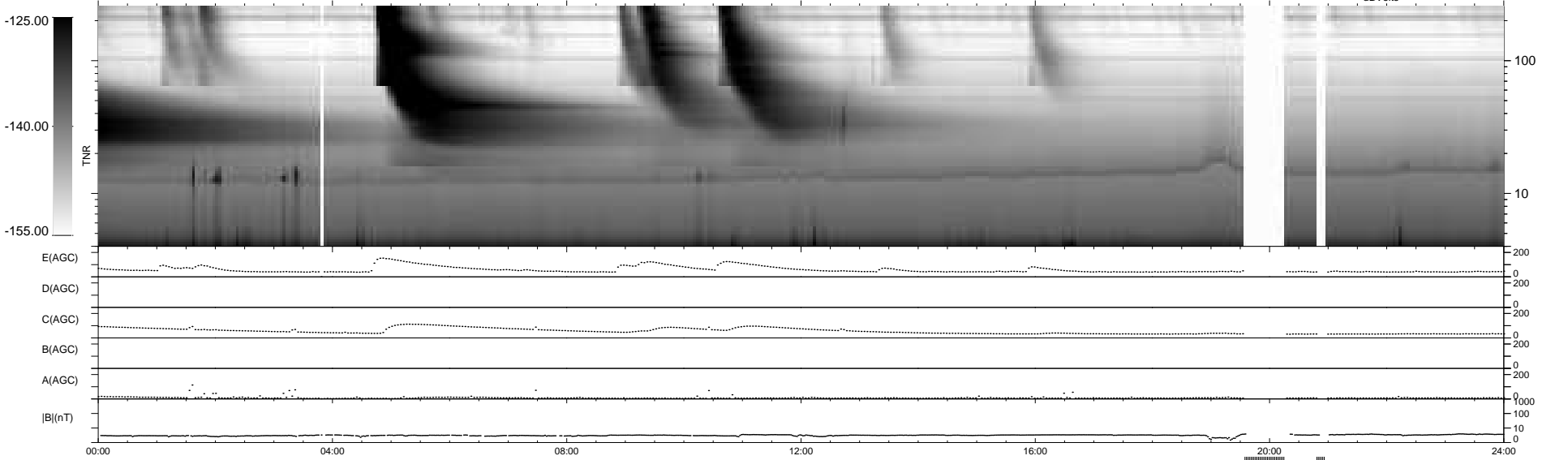
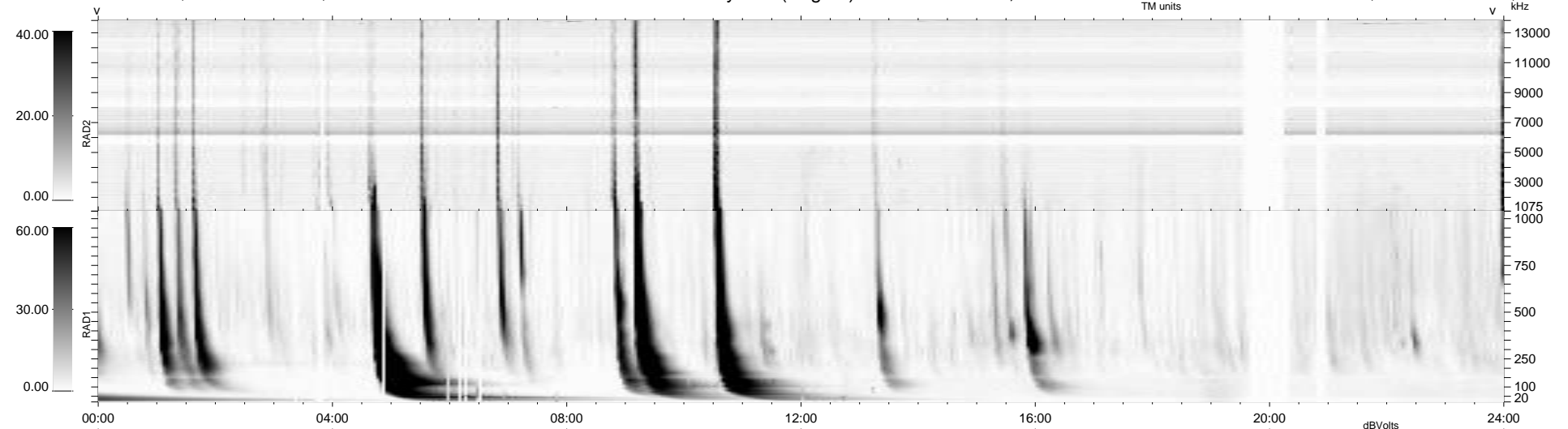
28 bad + 878 good MF/939MF projected (93%) - 33 missing MFs  
 Avg interval = 180 secs  
 Re = -254.80 (243.60, -72.49, 18.05 GSE)

windlib 2.0b

LZ version = v02

### WIND/WAVES Summary Plot (Page 1) for 13-NOV-2013, DOY = 317

DAILY 2013-11-19 10:47:01  
 Re = 254.26 (242.34, -74.86, 17.69 GSE)



RAD2  
 Antenna Ey  
 Mode LIN(1)  
 SUM/SEP SEP  
 Toggle OFF

RAD1  
 Antenna Ex  
 Mode LIS(2/4)  
 SUM/SEP SUM  
 Toggle OFF

TNR  
 Antenna ExEy  
 Mode A-32  
 Sweep ACE