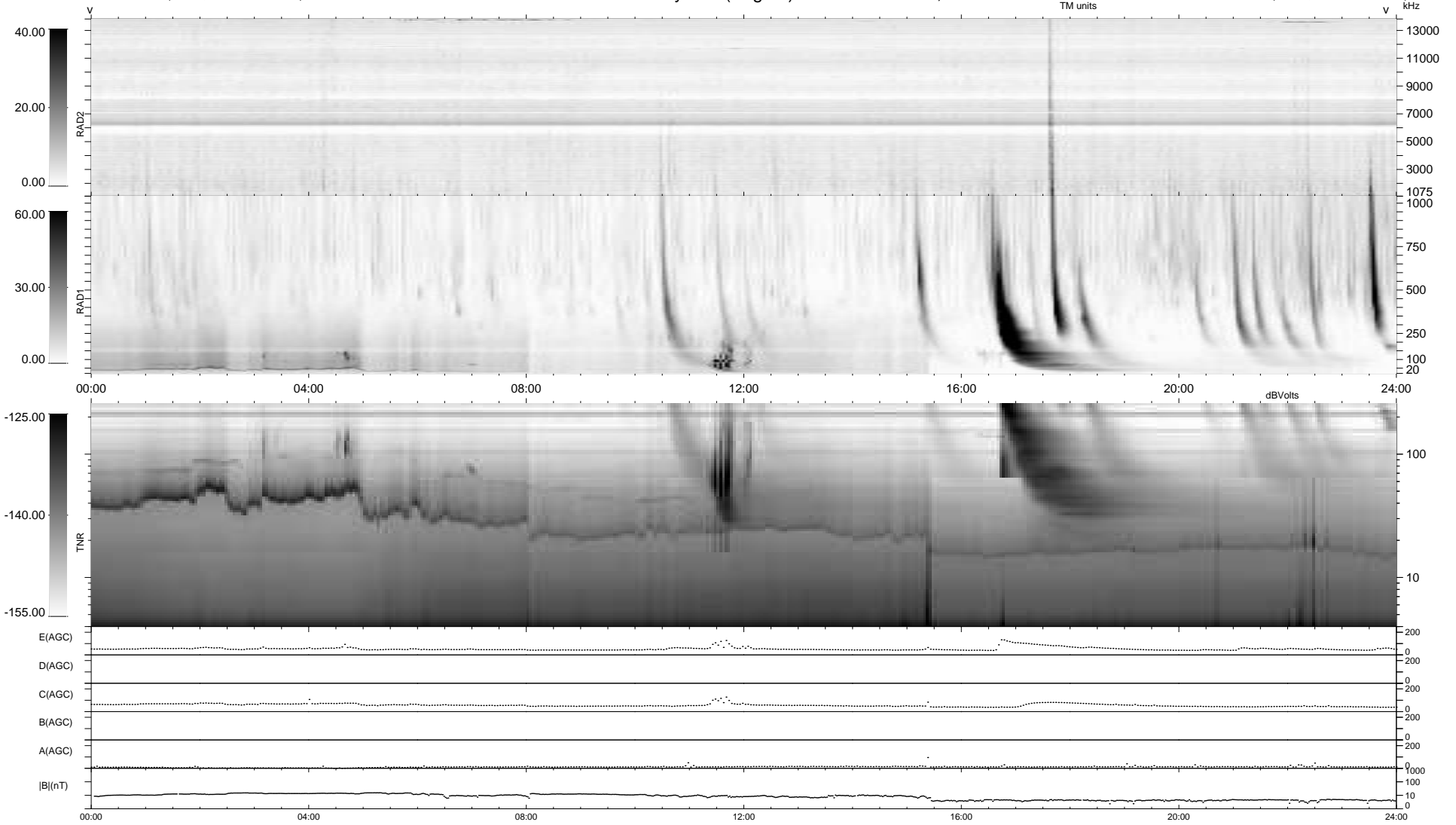


4 bad + 935 good MF/939MF projected (99%) - 0 missing MFs
 Avg interval = 180 secs
 Re = -256.95 (248.51, -62.40, 19.30 GSE)

windlib 2.0b LZ version = v01
 DAILY 2013-11-11 11:48:35
 Re = 256.43 (247.33, -64.97, 19.02 GSE)

WIND/WAVES Summary Plot (Page 1) for 09-NOV-2013, DOY = 313



RAD2
 Antenna Ey
 Mode LIN(1)
 SUM/SEP SEP
 Toggle OFF

RAD1
 Antenna Ex
 Mode LIS(2,4)
 SUM/SEP SUM
 Toggle OFF

TNR
 Antenna ExEy
 Mode A-32
 Sweep ACE