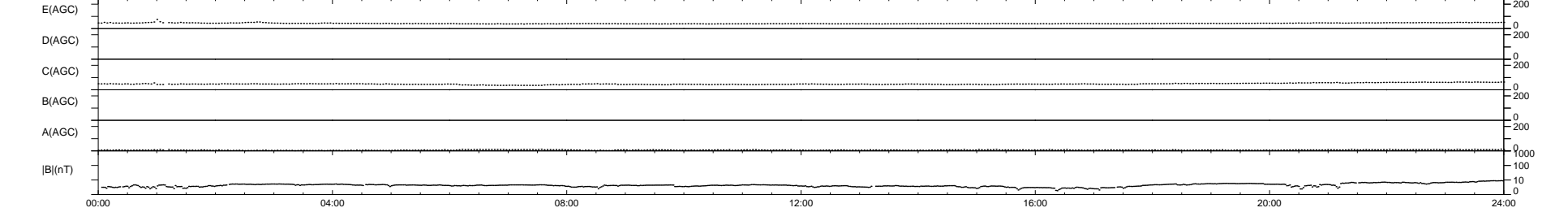
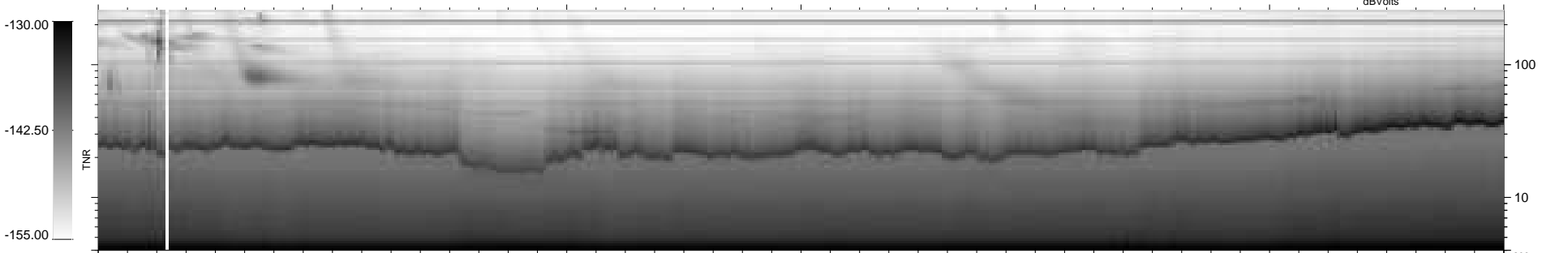
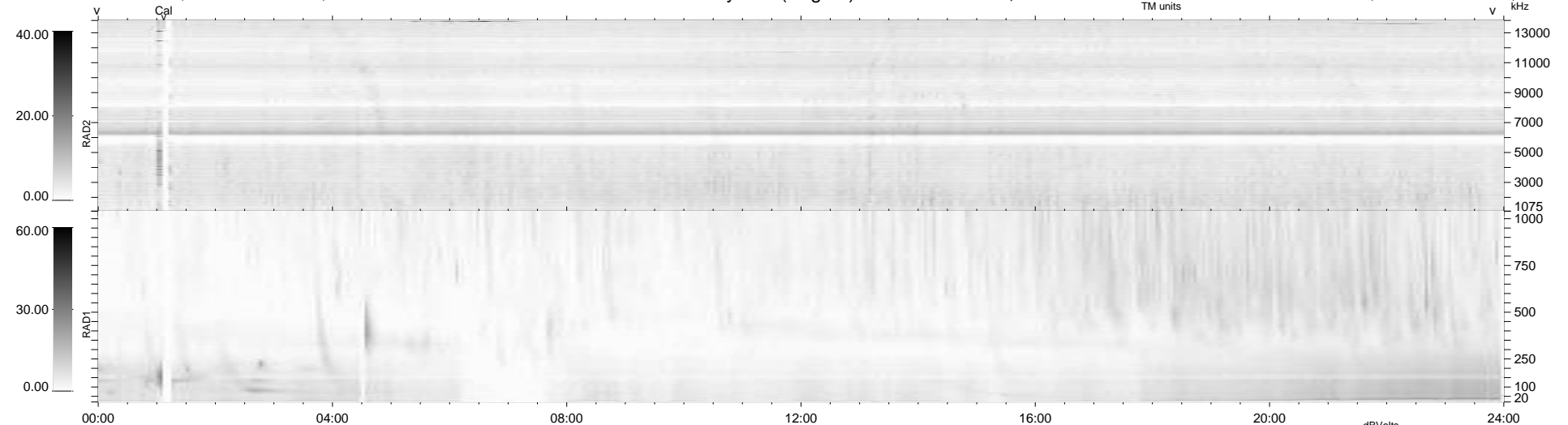


7 bad + 932 good MF/939MF projected (99%) - 0 missing MFs
 Avg interval = 180 secs
 Re = 257.44 (249.65, -59.76, 19.56 GSE)

windlib 2.0b LZ version = v01
 DAILY 2013-11-11 11:47:38
 Re = 256.95 (248.51, -62.38, 19.30 GSE)

WIND/WAVES Summary Plot (Page 1) for 08-NOV-2013, DOY = 312



```

RAD2
Antenna Ey .....
Mode LIN(1) .....
SUM/SEP SEP .....
Toggle OFF .....

RAD1
Antenna Ex .....
Mode LIS(2,4) .....
SUM/SEP SUM .....
Toggle OFF .....

TNR
Antenna ExEy .....
Mode A-32 .....
Sweep ACE .....
  
```