

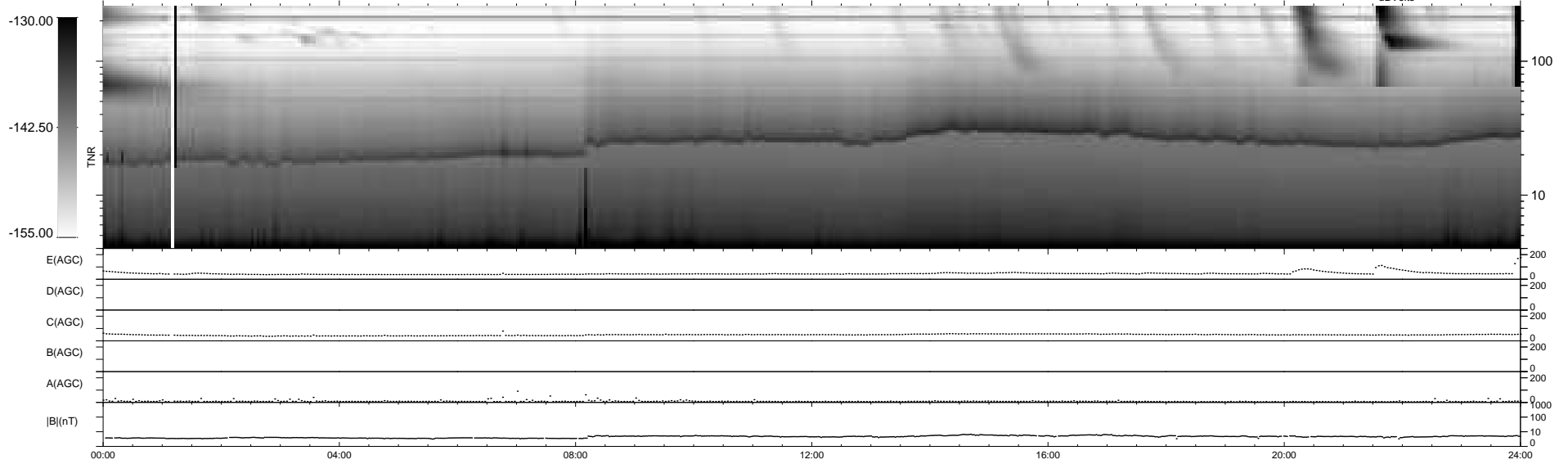
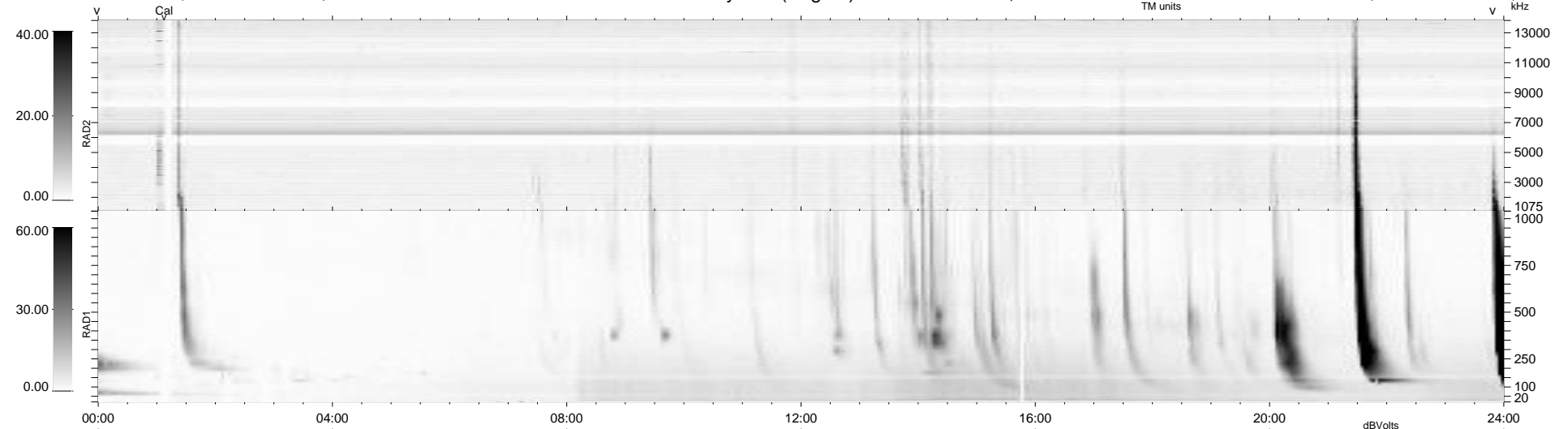
11 bad + 929 good MF/940MF projected (98%) - 0 missing MFs
 Avg interval = 180 secs
 Re = 258.37 (251.79, -54.36, 20.00 GSE)

windlib 2.0b

LZ version = v02

WIND/WAVES Summary Plot (Page 1) for 06-NOV-2013, DOY = 310

DAILY 2013-11-11 12:46:04
 Re = 257.95 (250.77, -57.06, 19.79 GSE)



```

RAD2
Antenna Ey .....
Mode LIN(1) .....
SUM/SEP SEP .....
Toggle OFF .....

RAD1
Antenna Ex .....
Mode LIS(2,4) .....
SUM/SEP SUM .....
Toggle OFF .....

TNR
Antenna ExEy .....
Mode A-32 .....
Sweep ACE .....
  
```