

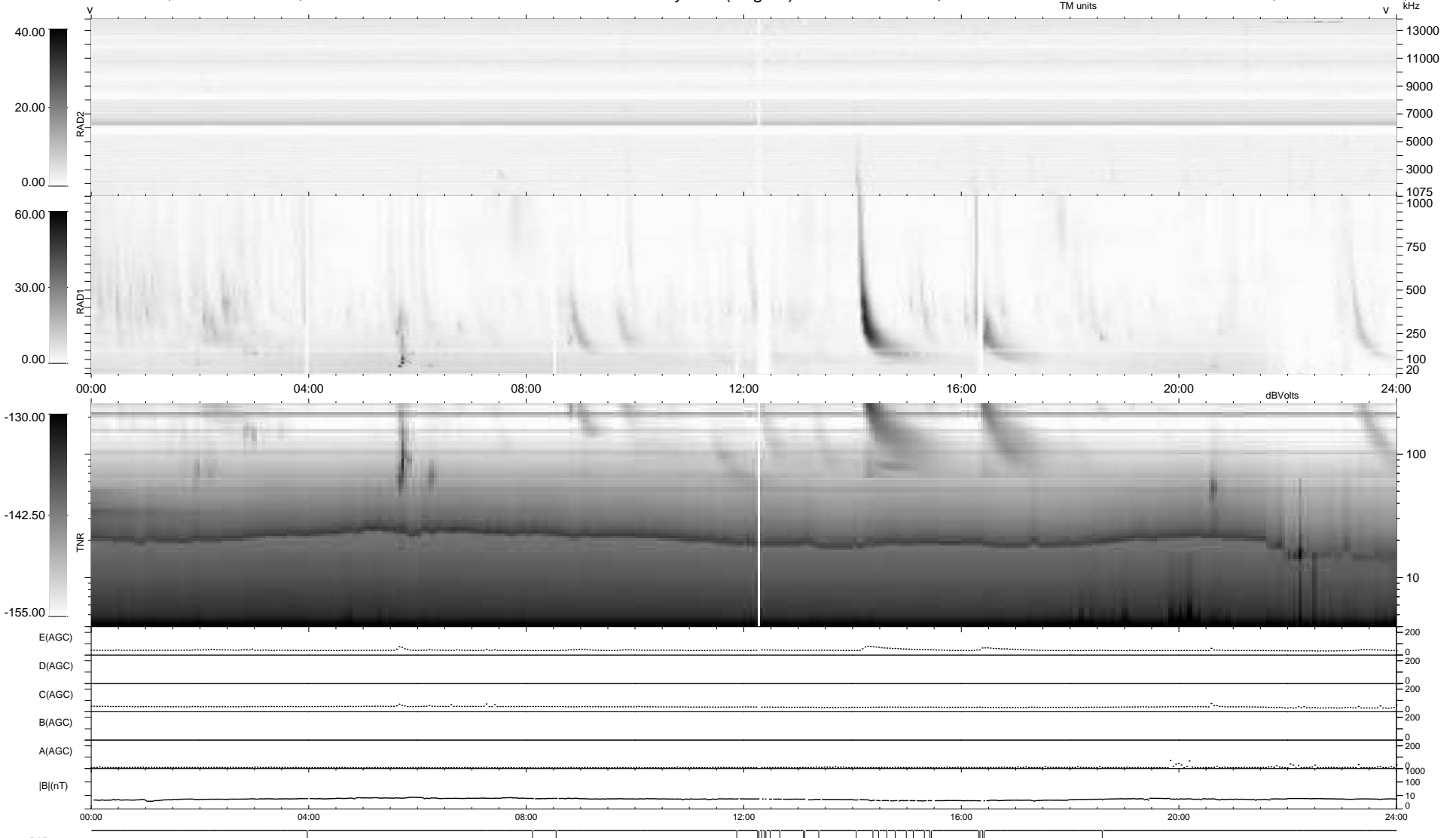
29 bad + 910 good MF/939MF projected (96%) - 0 missing MFs  
 Avg interval = 180 secs  
 Re = 259.33 (254.42, -45.88, 20.50 GSE)

windlib 2.0b

LZ version = v01

### WIND/WAVES Summary Plot (Page 1) for 03-NOV-2013, DOY = 307

DAILY 2013-11-04 15:46:04  
 Re = 259.07 (253.63, -48.74, 20.35 GSE)



RAD2  
 Antenna Ey  
 Mode LIN(1)  
 SUM/SEP SEP  
 Toggle OFF

RAD1  
 Antenna Ex  
 Mode LIS(2,4)  
 SUM/SEP SUM  
 Toggle OFF

TNR  
 Antenna ExEy  
 Mode A-32  
 Sweep ACE