

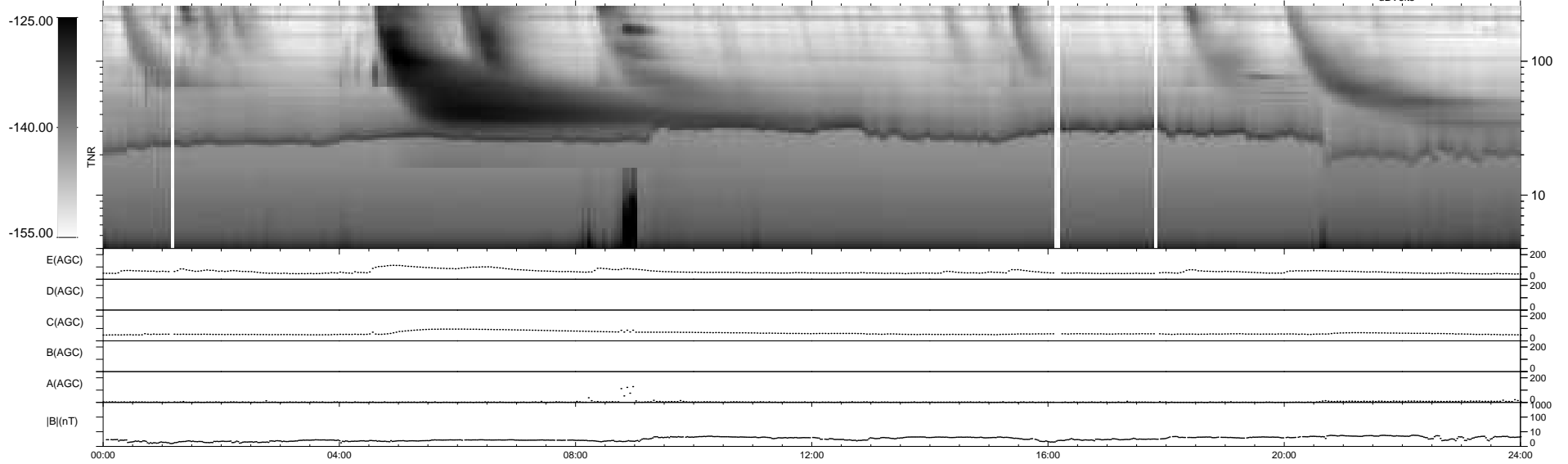
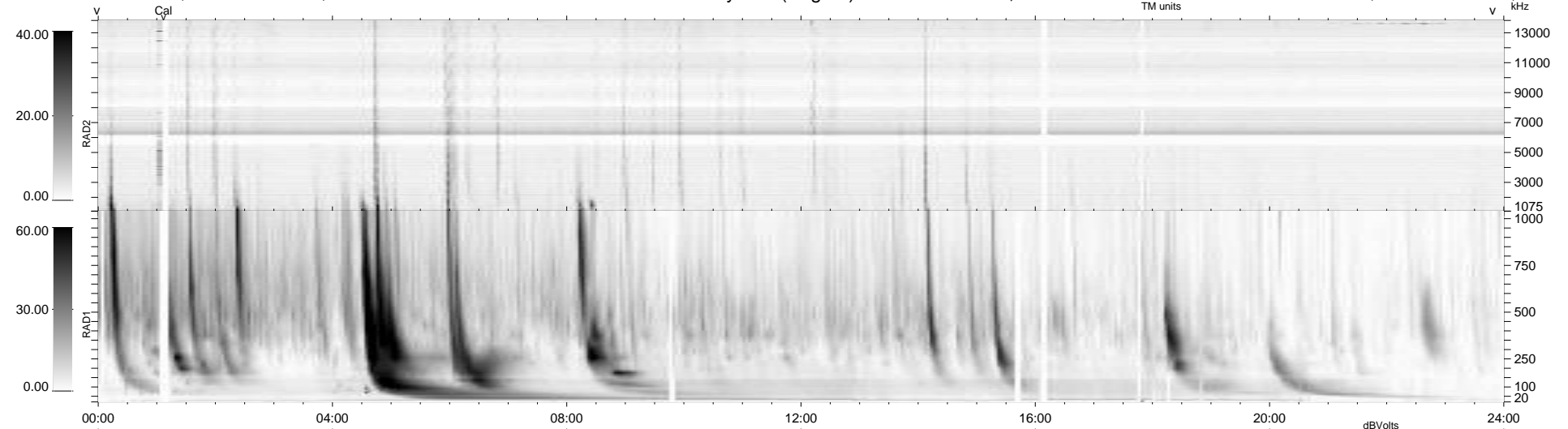
24 bad + 915 good MF/939MF projected (97%) - 0 missing MFs  
 Avg interval = 180 secs  
 Re = 259.55 (255.14, -42.94, 20.62 GSE)

windlib 2.0b

LZ version = v01

### WIND/WAVES Summary Plot (Page 1) for 02-NOV-2013, DOY = 306

DAILY 2013-11-03 22:46:04  
 Re = 259.34 (254.42, -45.86, 20.50 GSE)



RAD2  
 Antenna Ey  
 Mode LIN(1)  
 SUM/SEP SEP  
 Toggle OFF

RAD1  
 Antenna Ex  
 Mode LIS(2,4)  
 SUM/SEP SUM  
 Toggle OFF

TNR  
 Antenna ExEy  
 Mode A-32  
 Sweep ACE