

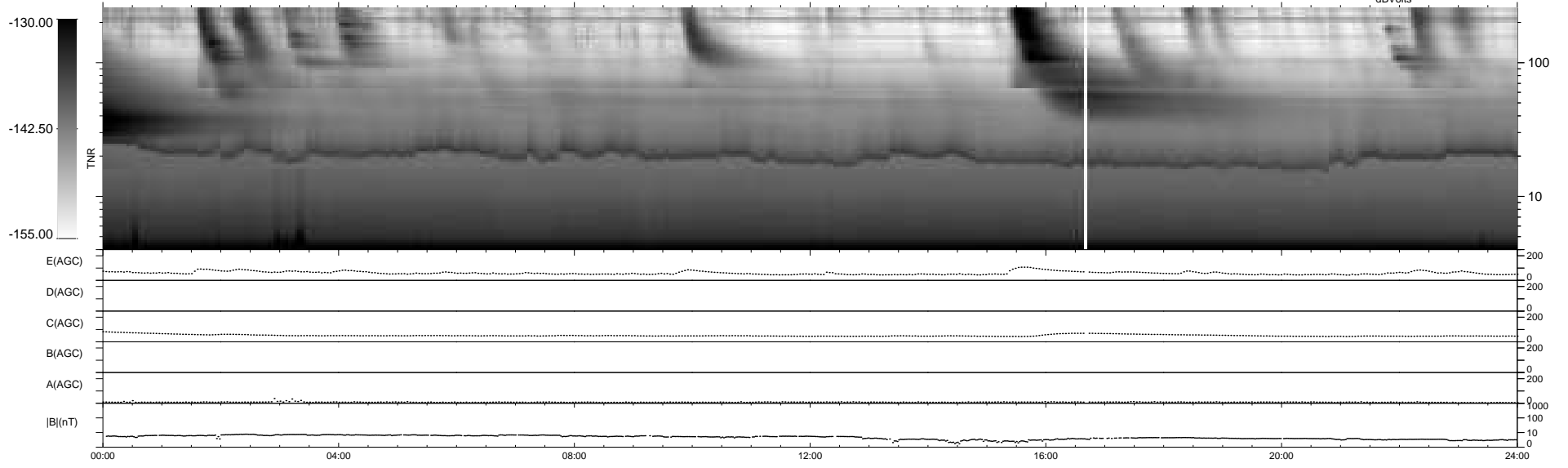
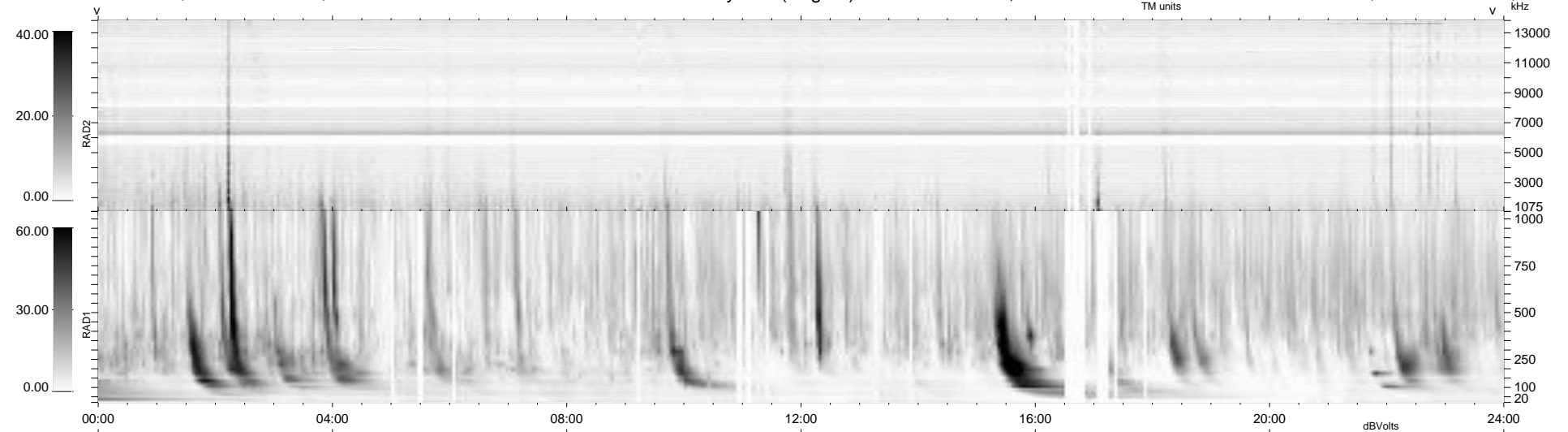
37 bad + 902 good MF/939MF projected (96%) - 0 missing MFs
 Avg interval = 180 secs
 Re = 259.71 (255.78, -39.94, 20.73 GSE)

windlib 2.0b

LZ version = v01

WIND/WAVES Summary Plot (Page 1) for 01-NOV-2013, DOY = 305

DAILY 2013-11-02 07:46:04
 Re = 259.55 (255.14, -42.92, 20.62 GSE)



RAD2
 Antenna Ey
 Mode LIN(1)
 SUM/SEP SEP
 Toggle OFF

RAD1
 Antenna Ex
 Mode LIS(2,4)
 SUM/SEP SUM
 Toggle OFF

TNR
 Antenna ExEy
 Mode A-32
 Sweep ACE