

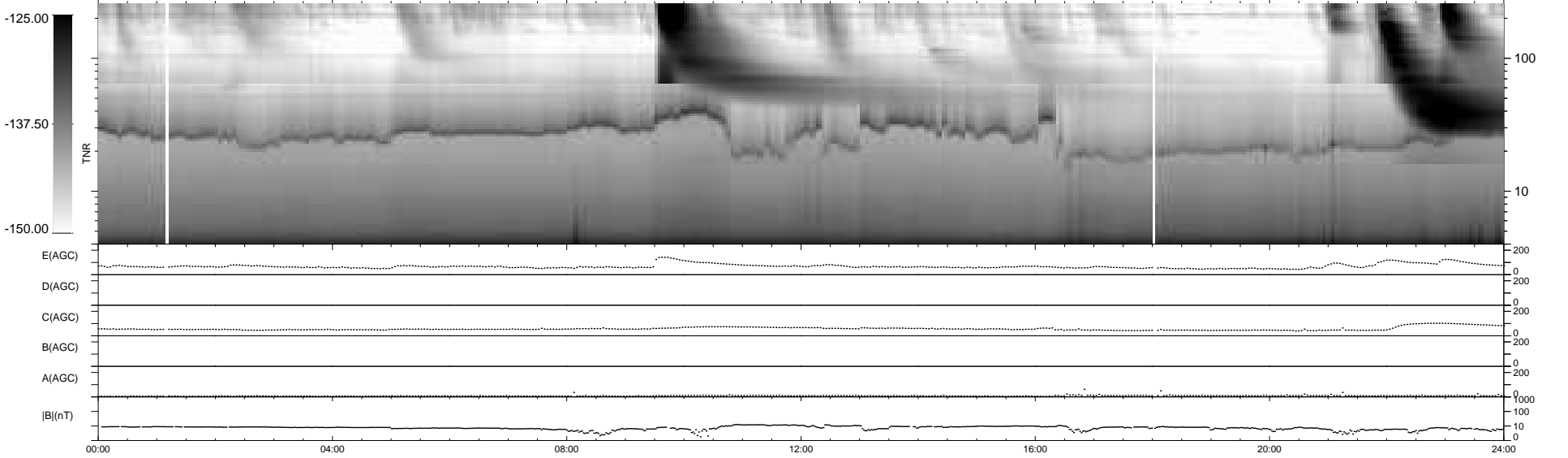
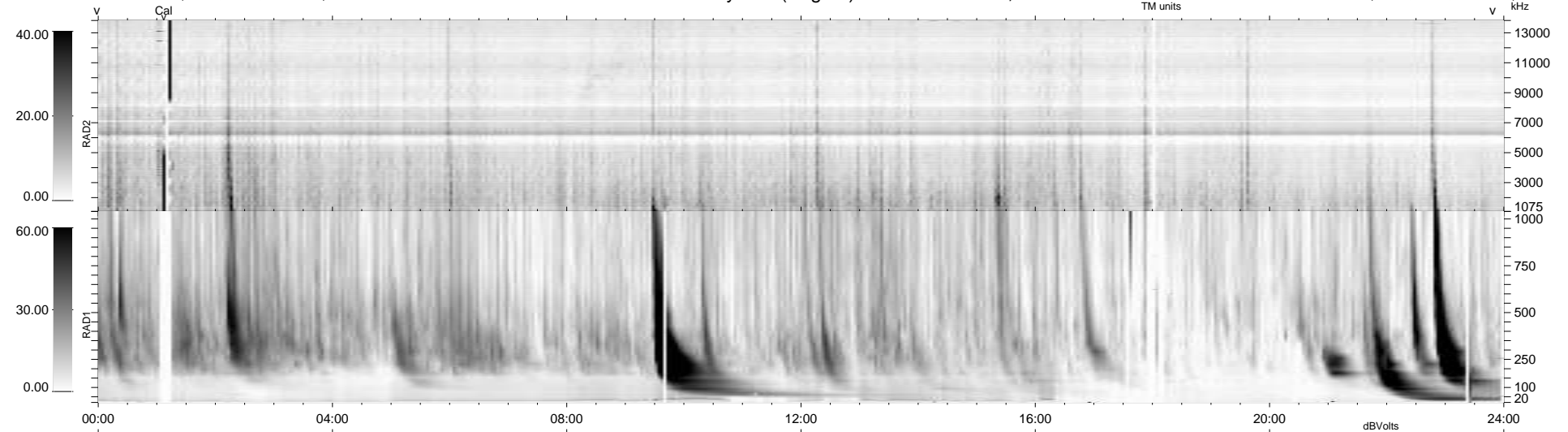
21 bad + 918 good MF/939MF projected (97%) - 0 missing MFs  
 Avg interval = 180 secs  
 Re = 259.82 (256.35, -36.87, 20.82 GSE)

windlib 2.0b

LZ version = v01

### WIND/WAVES Summary Plot (Page 1) for 31-OCT-2013, DOY = 304

DAILY 2013-11-01 17:46:04  
 Re = 259.71 (255.78, -39.91, 20.73 GSE)



```

RAD2
Antenna Ey .....
Mode LIN(1) .....
SUM/SEP SEP .....
Toggle OFF .....

RAD1
Antenna Ex .....
Mode LIS(2,4) .....
SUM/SEP SUM .....
Toggle OFF .....

TNR
Antenna ExEy .....
Mode A-32 .....
Sweep ACE .....
  
```