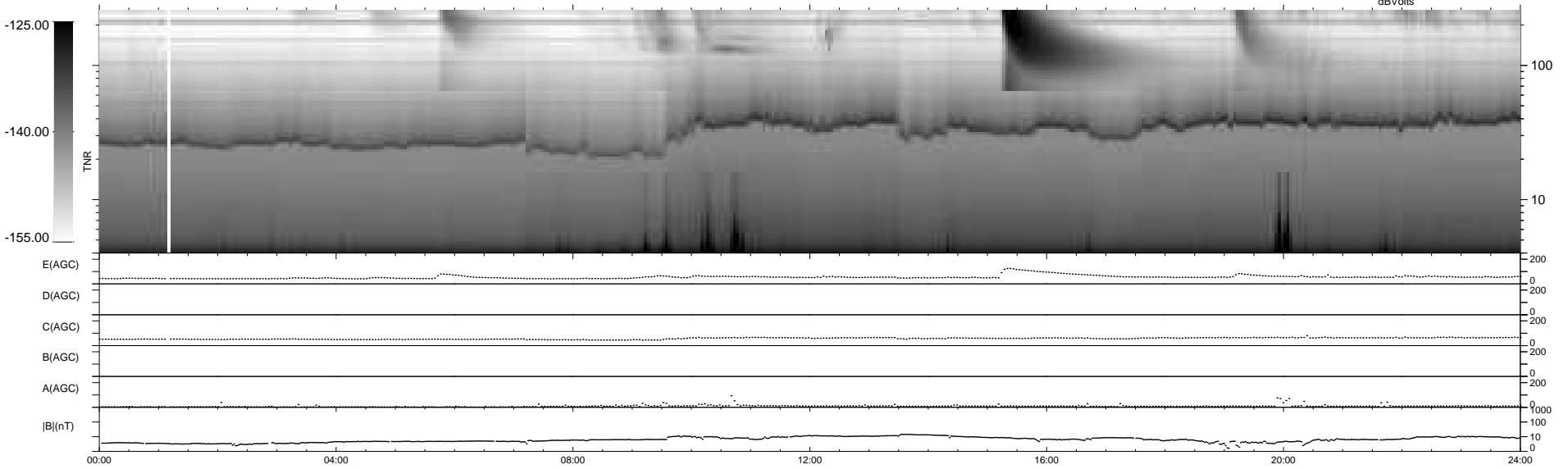
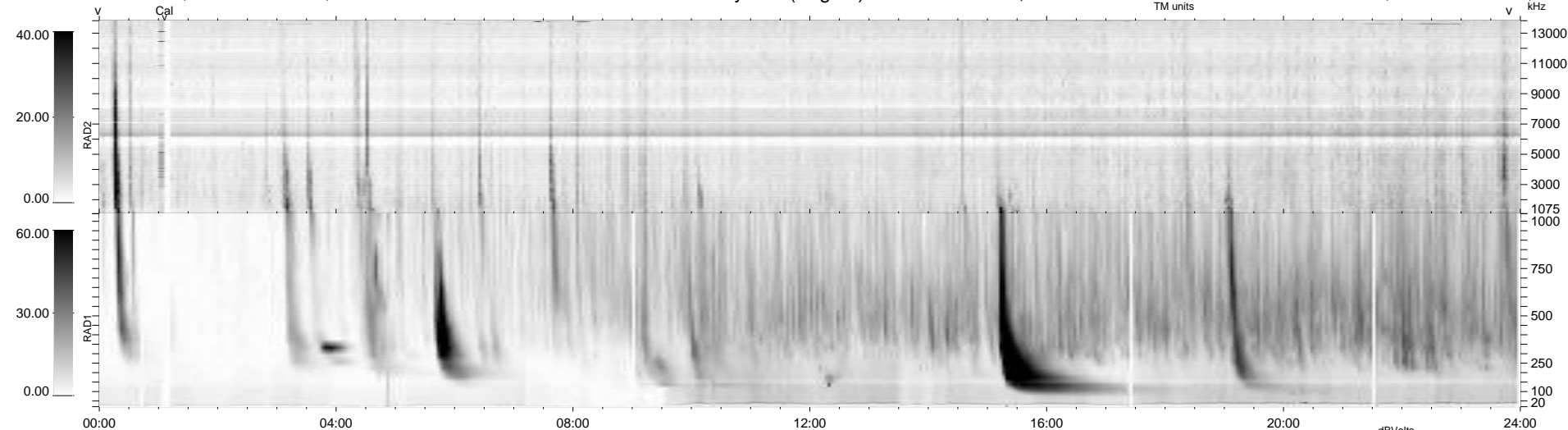


9 bad + 930 good MF/939MF projected (99%) - 0 missing MFs  
 Avg interval = 180 secs  
 Re = 259.92 (257.27, -30.52, 20.94 GSE)

windlib 2.0b LZ version = v01  
 DAILY 2013-10-30 08:46:05  
 Re = 259.89 (256.85, -33.71, 20.89 GSE)

### WIND/WAVES Summary Plot (Page 1) for 29-OCT-2013, DOY = 302



RAD2  
 Antenna Ey .....  
 Mode LIN(1) .....  
 SUM/SEP SEP .....  
 Toggle OFF .....  
 RAD1  
 Antenna Ex .....  
 Mode LIS(2,4) .....  
 SUM/SEP SUM .....  
 Toggle OFF .....  
 TNR  
 Antenna ExEy .....  
 Mode A-32 .....  
 Sweep ACE .....