

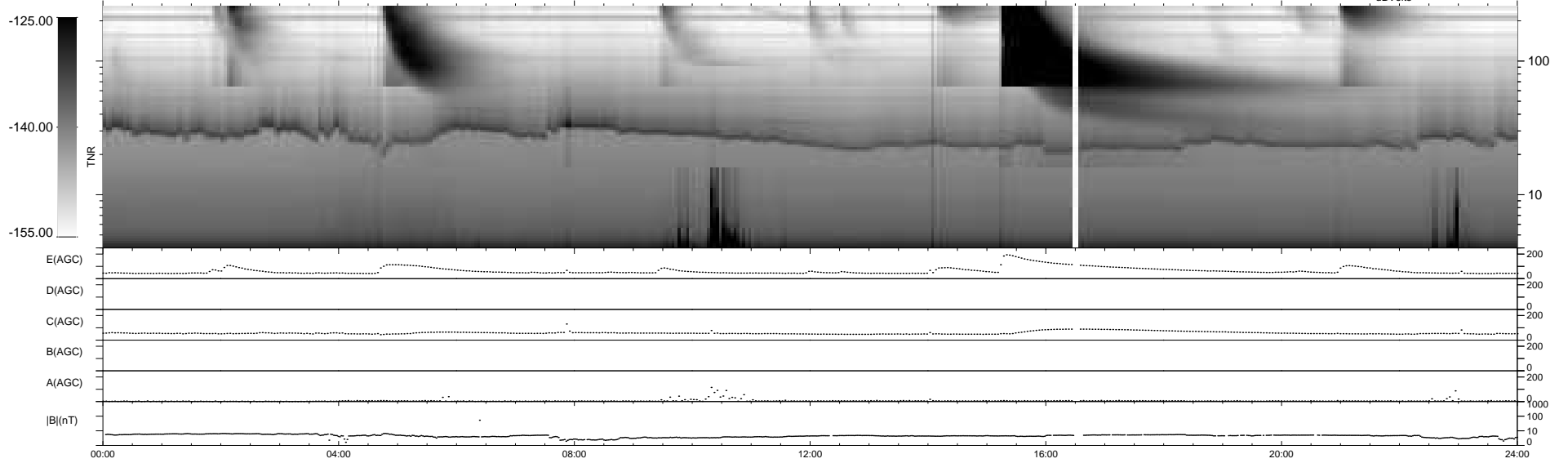
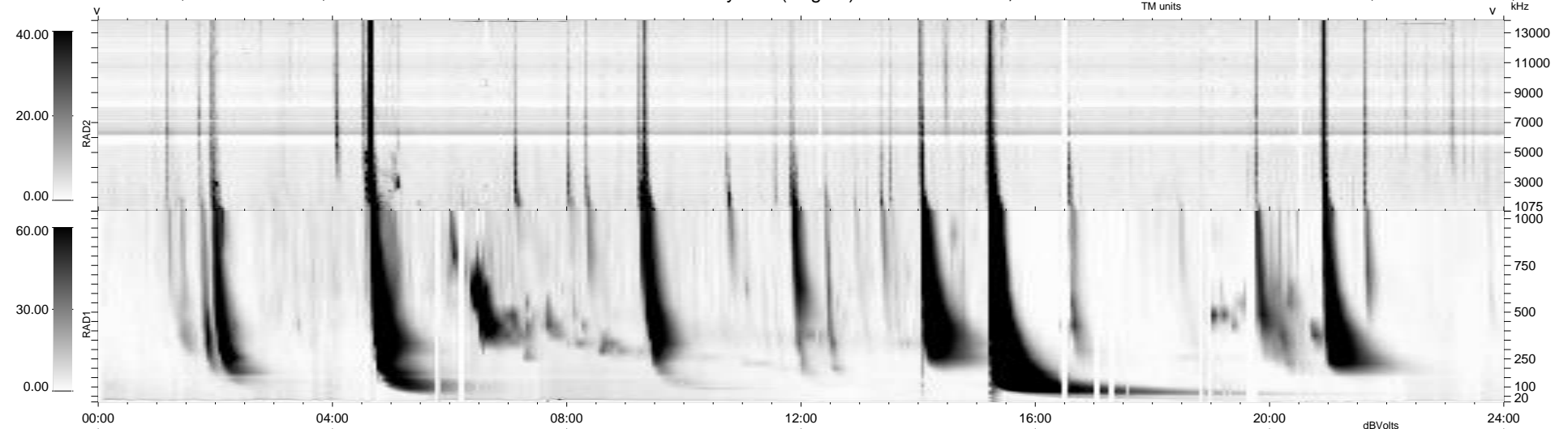
33 bad + 906 good MF/939MF projected (96%) - 0 missing MFs  
 Avg interval = 180 secs  
 Re = 259.93 (257.64, -27.26, 20.97 GSE)

windlib 2.0b

LZ version = v02

### WIND/WAVES Summary Plot (Page 1) for 28-OCT-2013, DOY = 301

DAILY 2013-10-30 10:46:03  
 Re = 259.92 (257.27, -30.50, 20.94 GSE)



RAD2  
 Antenna Ey  
 Mode LIN(1)  
 SUM/SEP SEP  
 Toggle OFF

RAD1  
 Antenna  
 Mode  
 SUM/SEP  
 Toggle

TNR  
 Antenna ExEy  
 Mode A-32  
 Sweep ACE