

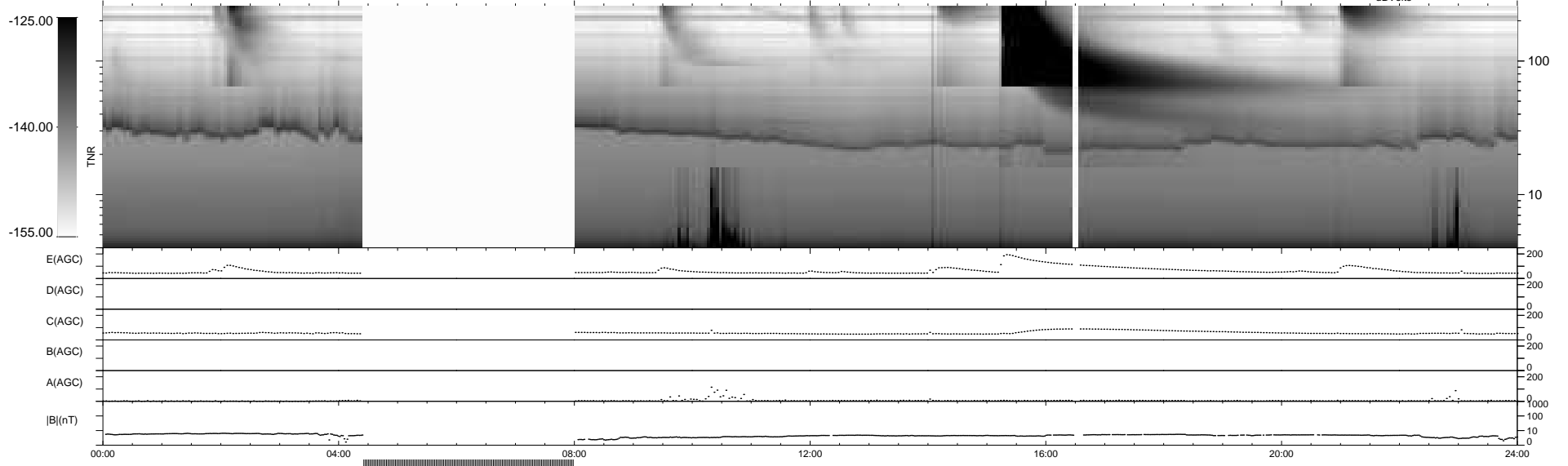
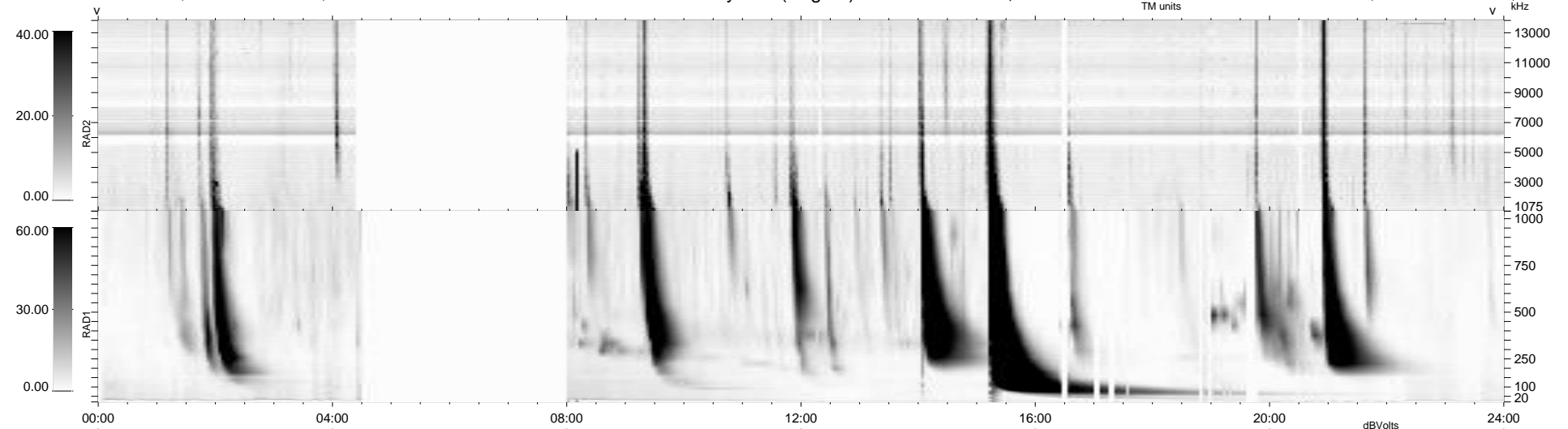
28 bad + 771 good MF/939MF projected (82%) - 140 missing MFs
 Avg interval = 180 secs
 Re = 259.93 (257.64, -27.26, 20.97 GSE)

windlib 2.0b

LZ version = v01

WIND/WAVES Summary Plot (Page 1) for 28-OCT-2013, DOY = 301

DAILY 2013-10-29 15:46:04
 Re = 259.92 (257.27, -30.50, 20.94 GSE)



RAD2
 Antenna Ey
 Mode LIN(1)
 SUM/SEP SEP
 Toggle OFF

RAD1
 Antenna
 Mode
 SUM/SEP
 Toggle

TNR
 Antenna ExEy
 Mode A-32
 Sweep ACE