

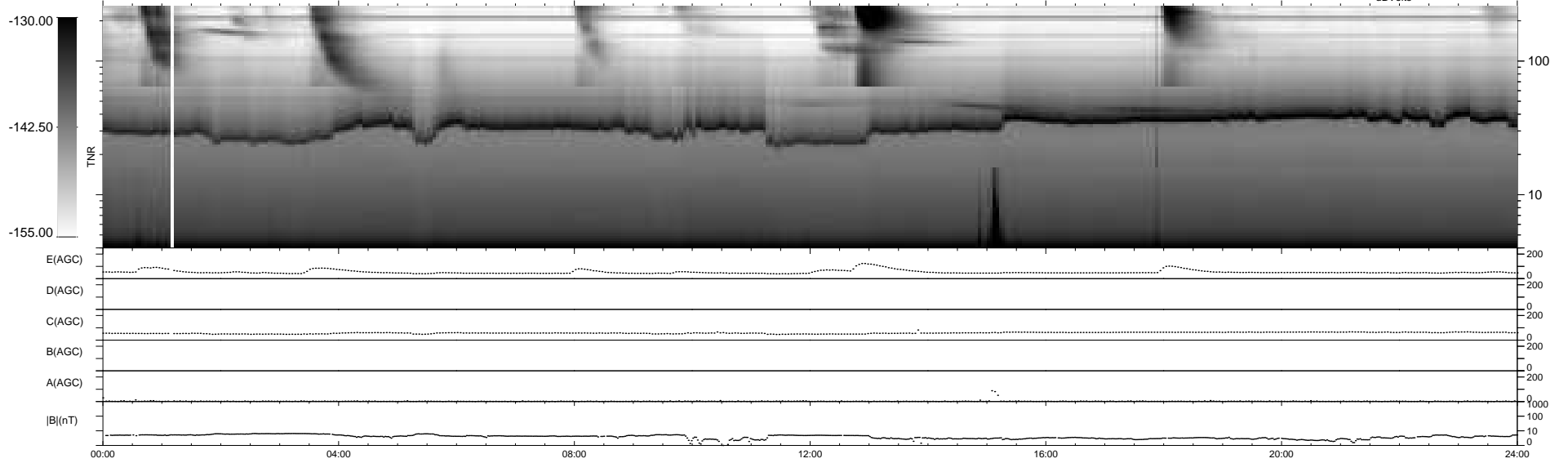
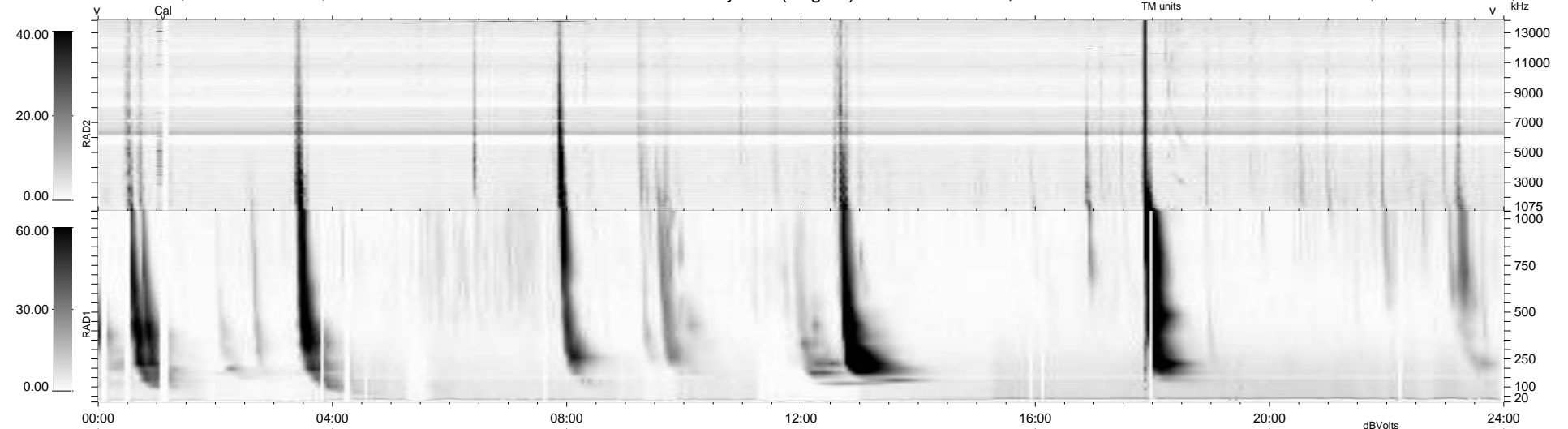
26 bad + 913 good MF/939MF projected (97%) - 0 missing MFs
 Avg interval = 180 secs
 Re = 259.91 (257.95, -23.93, 20.99 GSE)

windlib 2.0b

LZ version = v01

WIND/WAVES Summary Plot (Page 1) for 27-OCT-2013, DOY = 300

DAILY 2013-10-28 06:46:03
 Re = 259.93 (257.64, -27.23, 20.97 GSE)



RAD2
 Antenna Ey
 Mode LIN(1)
 SUM/SEP SEP
 Toggle OFF

RAD1
 Antenna Ex
 Mode LIS(2,4)
 SUM/SEP SUM
 Toggle OFF

TNR
 Antenna ExEy
 Mode A-32
 Sweep ACE