

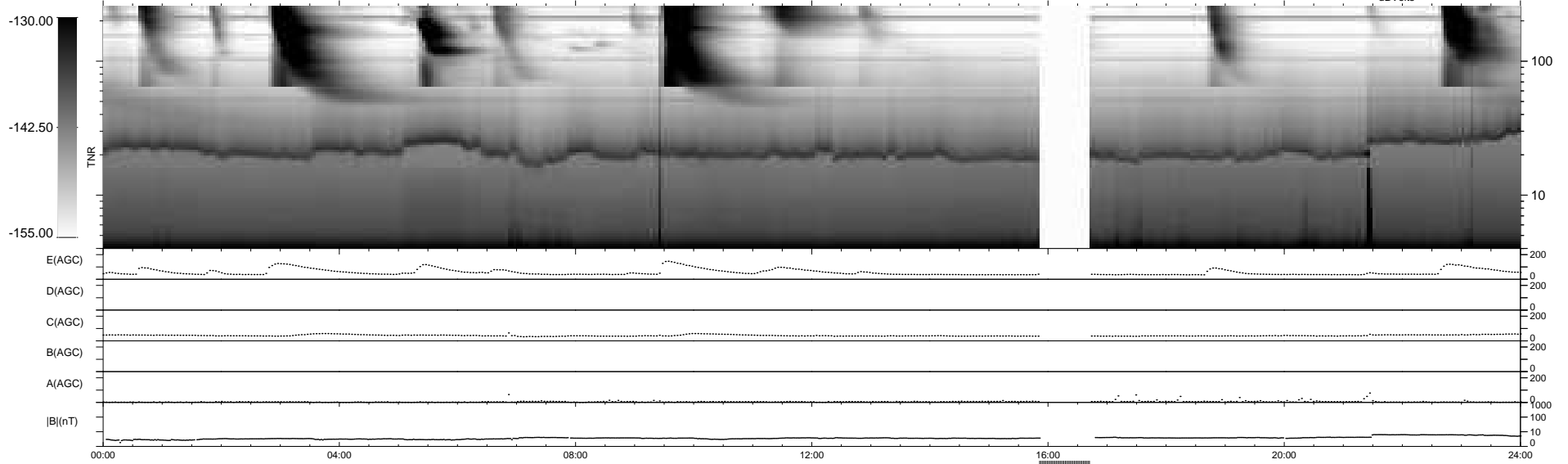
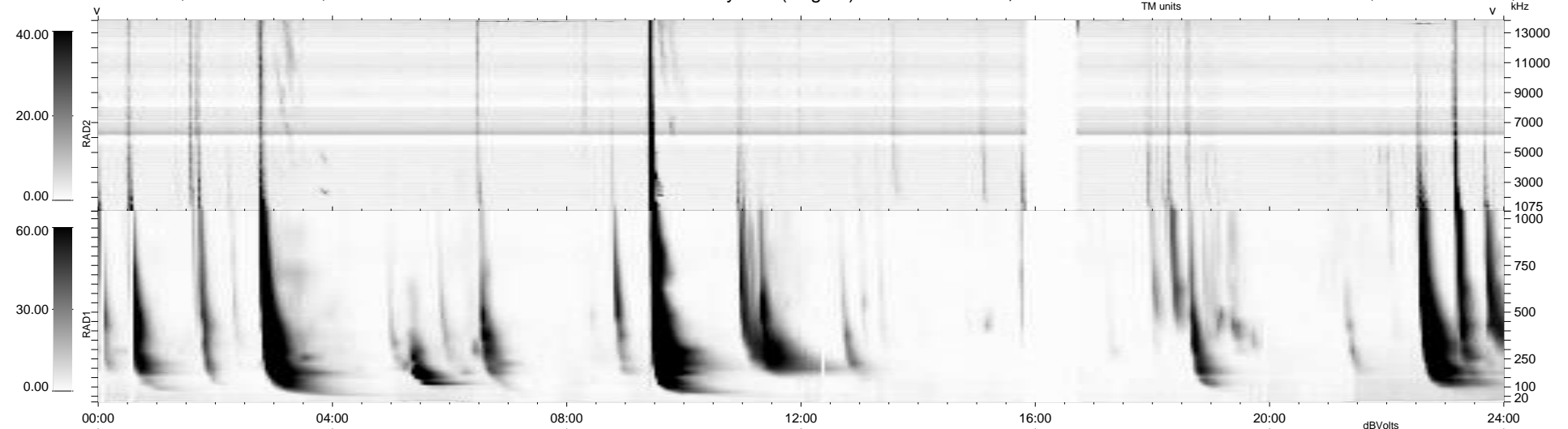
15 bad + 890 good MF/939MF projected (94%) - 34 missing MFs
 Avg interval = 180 secs
 Re = 259.88 (258.21, -20.54, 20.99 GSE)

windlib 2.0b

LZ version = v01

WIND/WAVES Summary Plot (Page 1) for 26-OCT-2013, DOY = 299

DAILY 2013-10-27 17:46:04
 Re = 259.91 (257.95, -23.90, 20.99 GSE)



RAD2
 Antenna Ey
 Mode LIN(1)
 SUM/SEP SEP
 Toggle OFF
 RAD1
 Antenna Ex
 Mode LIS(2,4)
 SUM/SEP SUM
 Toggle OFF
 TNR
 Antenna ExEy
 Mode A-32
 Sweep ACE