

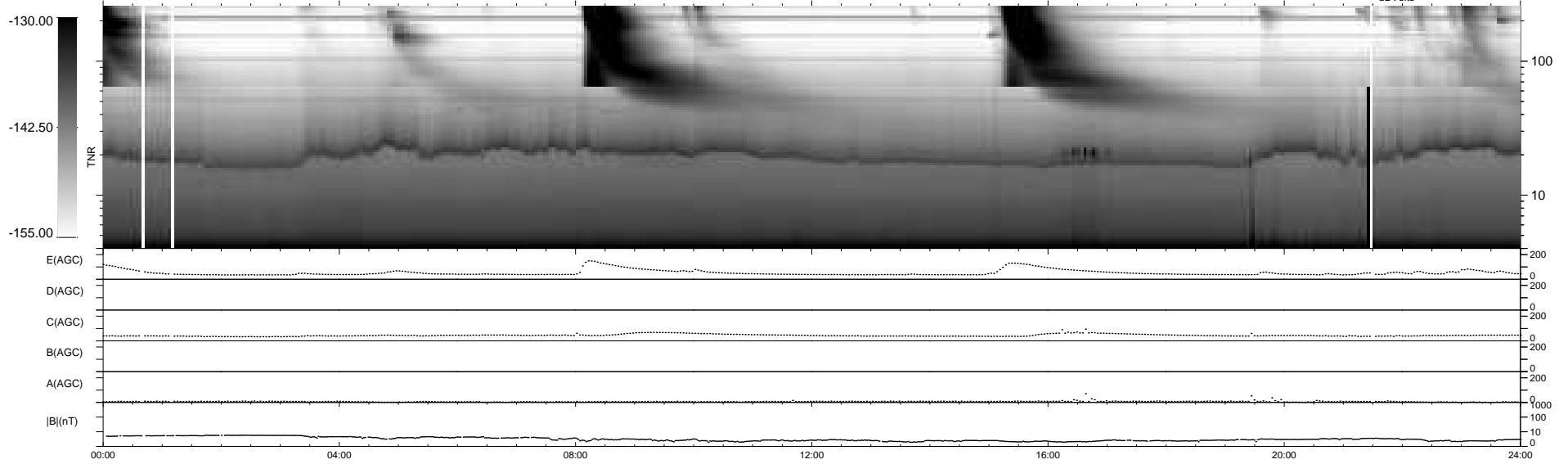
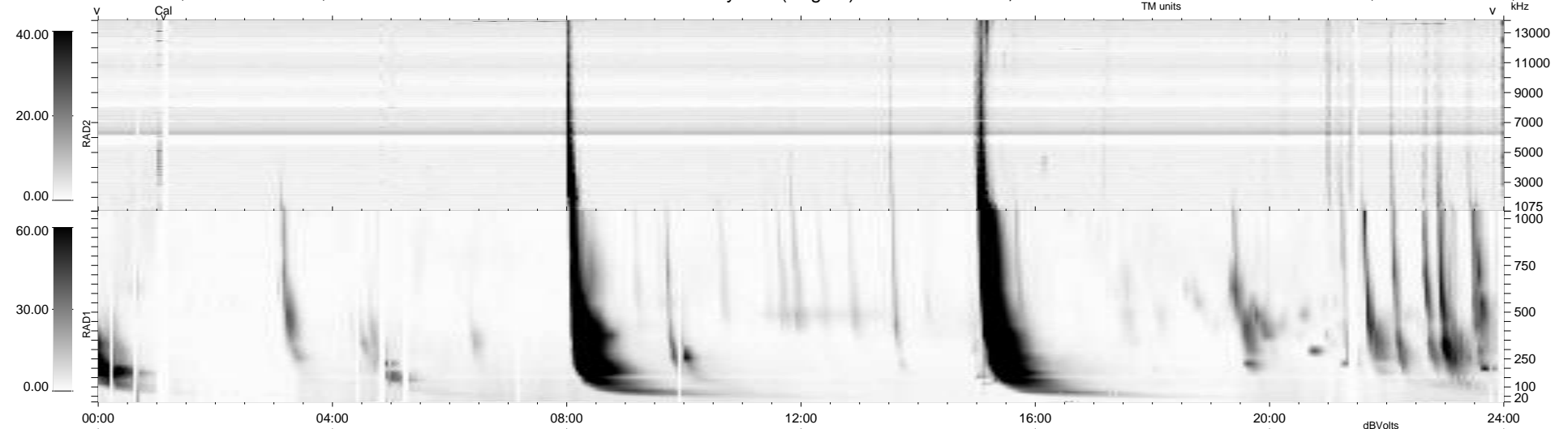
44 bad + 895 good MF/939MF projected (95%) - 0 missing MFs
 Avg interval = 180 secs
 Re = 259.84 (258.43, -17.10, 20.97 GSE)

windlib 2.0b

LZ version = v01

WIND/WAVES Summary Plot (Page 1) for 25-OCT-2013, DOY = 298

DAILY 2013-10-26 06:46:03
 Re = 259.88 (258.21, -20.52, 20.99 GSE)



```

RAD2
Antenna Ey
Mode LIN(1)
SUM/SEP SEP
Toggle OFF

RAD1
Antenna Ex
Mode LIS(2,4)
SUM/SEP SUM
Toggle OFF

TNR
Antenna ExEy
Mode A-32
Sweep ACE
  
```