

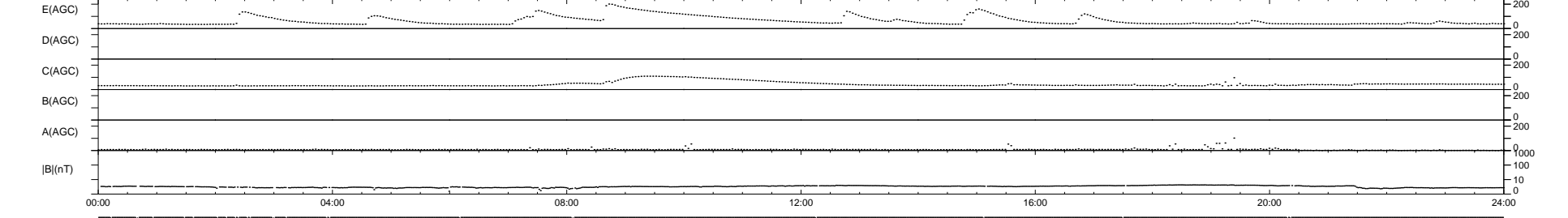
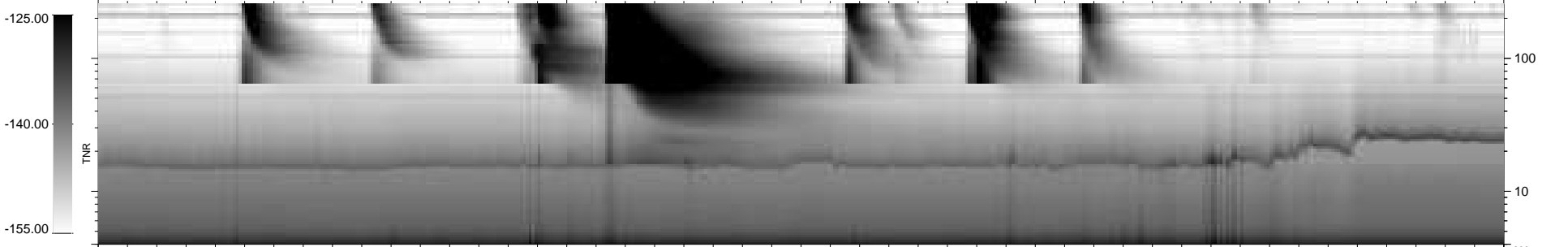
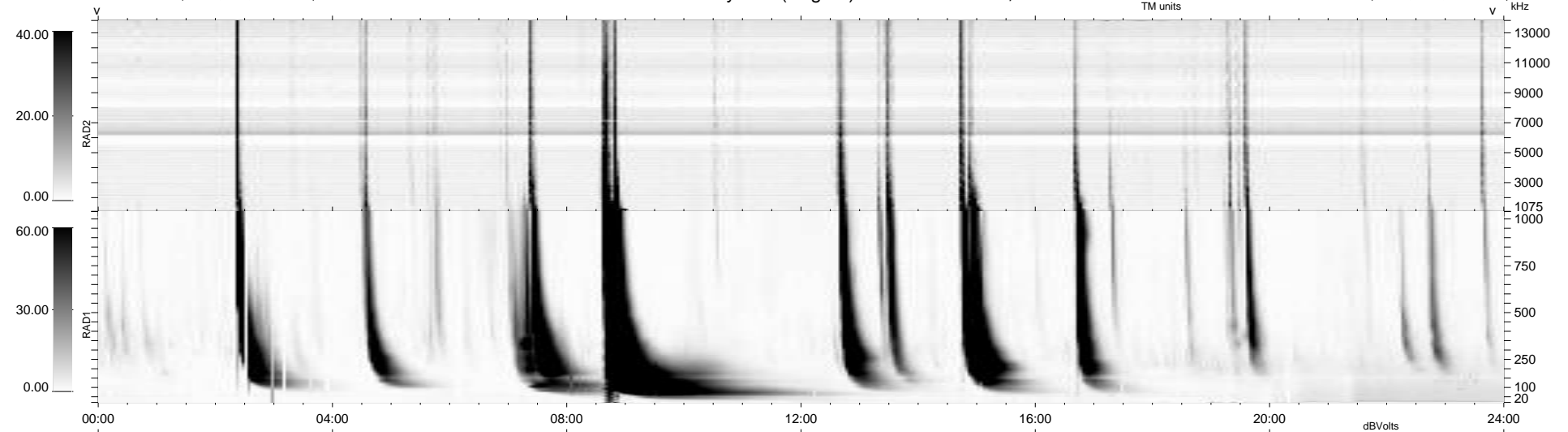
25 bad + 914 good MF/939MF projected (97%) - 0 missing MFs
 Avg interval = 180 secs
 Re = -259.77 (258.95, 0.67, 20.62 GSE)

windlib 2.0b

LZ version = v01

WIND/WAVES Summary Plot (Page 1) for 20-OCT-2013, DOY = 293

DAILY 2013-10-21 13:46:04
 Re = 259.75 (258.90, -2.91, 20.73 GSE)



```

RAD2
Antenna Ey .....
Mode LIN(1) .....
SUM/SEP SEP .....
Toggle OFF .....

RAD1
Antenna Ex .....
Mode LIS(2,4) .....
SUM/SEP SUM .....
Toggle OFF .....

TNR
Antenna ExEy .....
Mode A-32 .....
Sweep ACE .....
  
```