

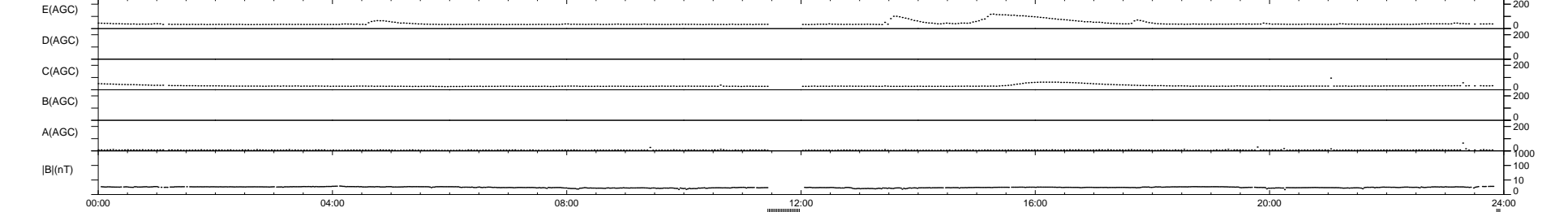
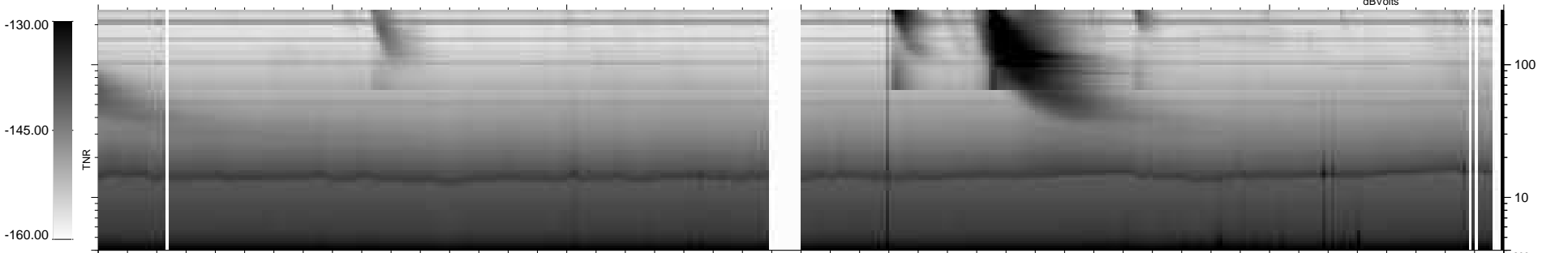
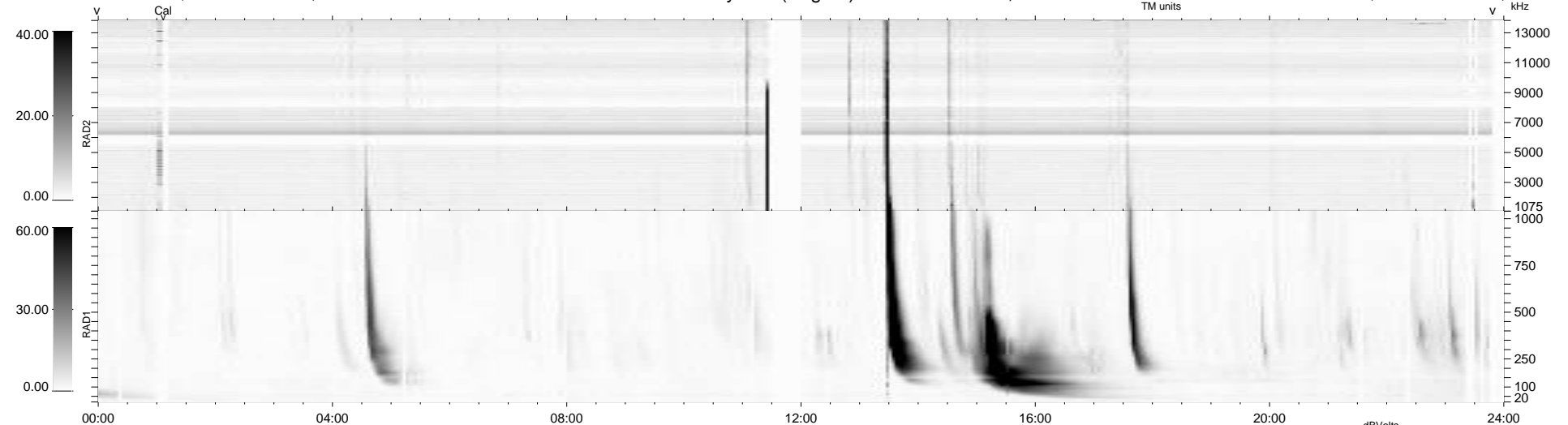
43 bad + 871 good MF/939MF projected (92%) - 25 missing MFs
 Avg interval = 180 secs
 Re = 259.81 (258.97, 4.28, 20.49 GSE)

windlib 2.0b

LZ version = v02

WIND/WAVES Summary Plot (Page 1) for 19-OCT-2013, DOY = 292

DAILY 2013-10-21 17:46:04
 Re = 259.77 (258.95, 0.70, 20.62 GSE)



```

RAD2
Antenna Ey .....
Mode LIN(1) .....
SUM/SEP SEP .....
Toggle OFF .....

RAD1
Antenna Ex .....
Mode LIS(2,4) .....
SUM/SEP SUM .....
Toggle OFF .....

TNR
Antenna ExEy .....
Mode A-32 .....
Sweep ACE .....
  
```