

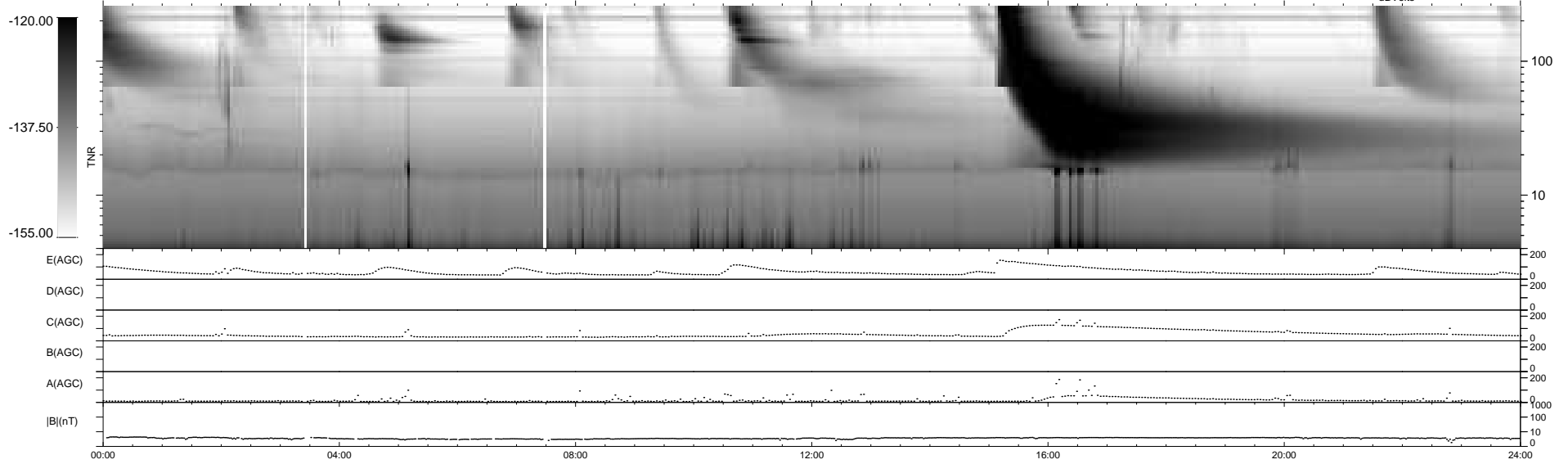
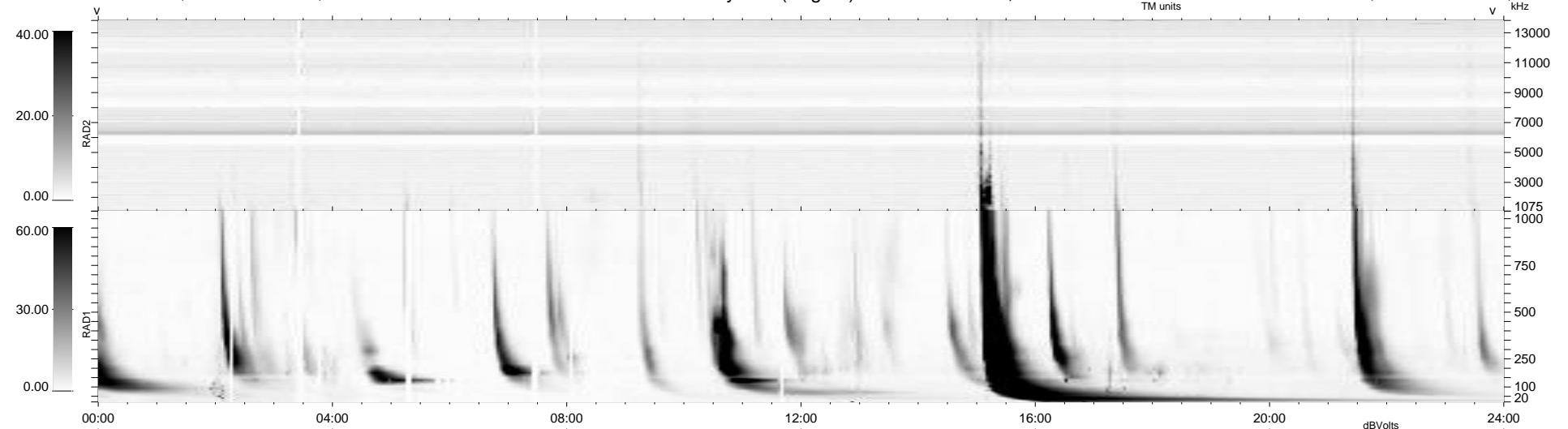
24 bad + 915 good MF/939MF projected (97%) - 0 missing MFs
 Avg interval = 180 secs
 Re = - 260.10 (258.90, 15.03, 19.98 GSE)

windlib 2.0b

LZ version = v01

WIND/WAVES Summary Plot (Page 1) for 16-OCT-2013, DOY = 289

DAILY 2013-10-17 04:46:04
 Re = 259.98 (258.94, 11.50, 20.17 GSE)



RAD2
 Antenna Ey
 Mode LIN(1)
 SUM/SEP SEP
 Toggle OFF

RAD1
 Antenna Ex
 Mode LIS(2,4)
 SUM/SEP SUM
 Toggle OFF

TNR
 Antenna ExEy
 Mode A-32
 Sweep ACE