

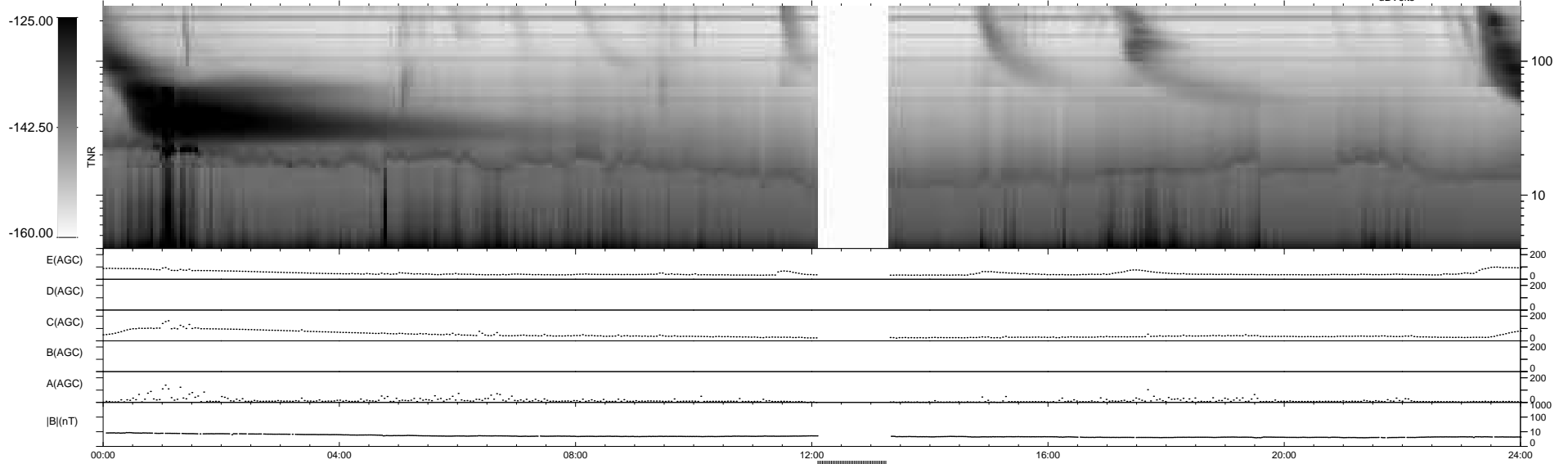
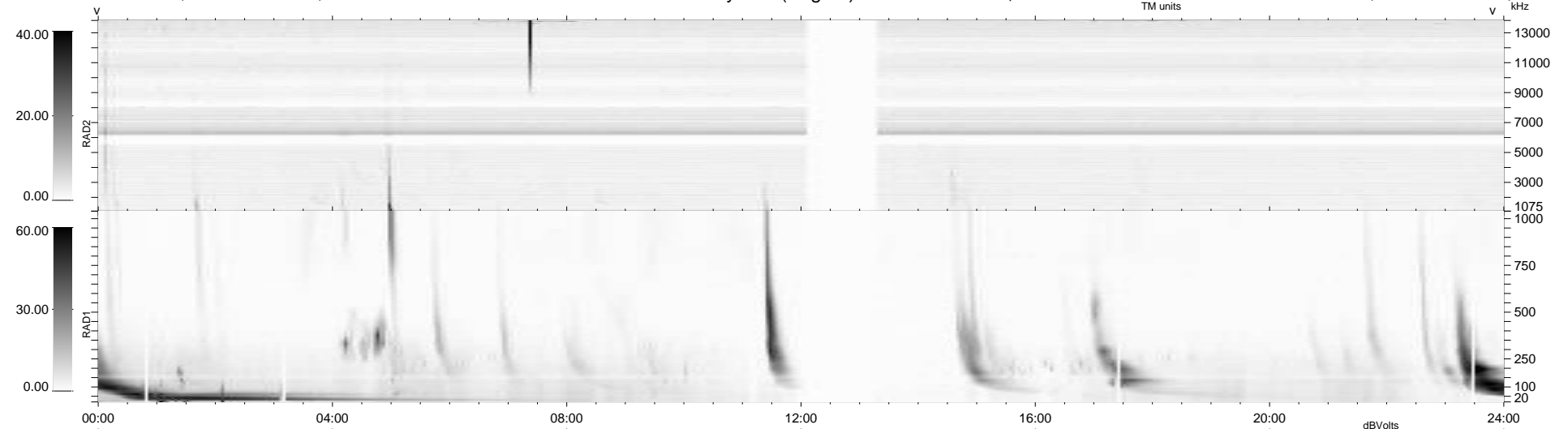
22 bad + 871 good MF/939MF projected (92%) - 46 missing MFs
 Avg interval = 180 secs
 Re = 260.94 (257.89, 35.29, 18.36 GSE)

windlib 2.0b

LZ version = v02

WIND/WAVES Summary Plot (Page 1) for 10-OCT-2013, DOY = 283

DAILY 2013-10-14 10:46:04
 Re = 260.83 (258.17, 32.10, 18.68 GSE)



```

RAD2
Antenna Ey .....
Mode LIN(1) .....
SUM/SEP SEP .....
Toggle OFF .....

RAD1
Antenna Ex .....
Mode LIS(2,4) .....
SUM/SEP SUM .....
Toggle OFF .....

TNR
Antenna ExEy .....
Mode A-32 .....
Sweep ACE .....
  
```