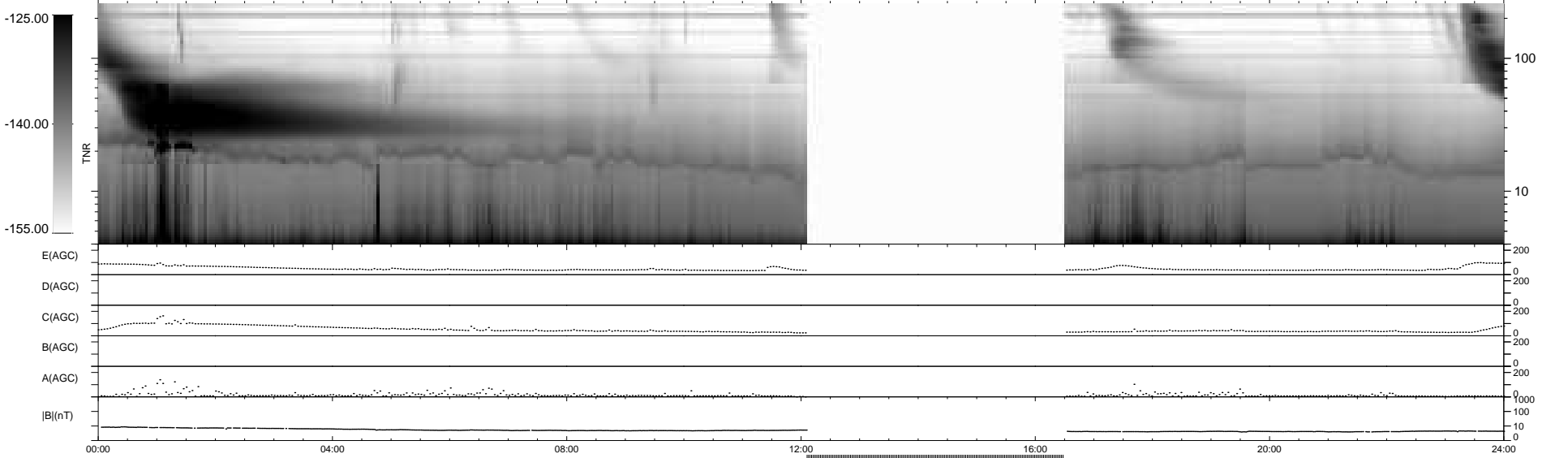
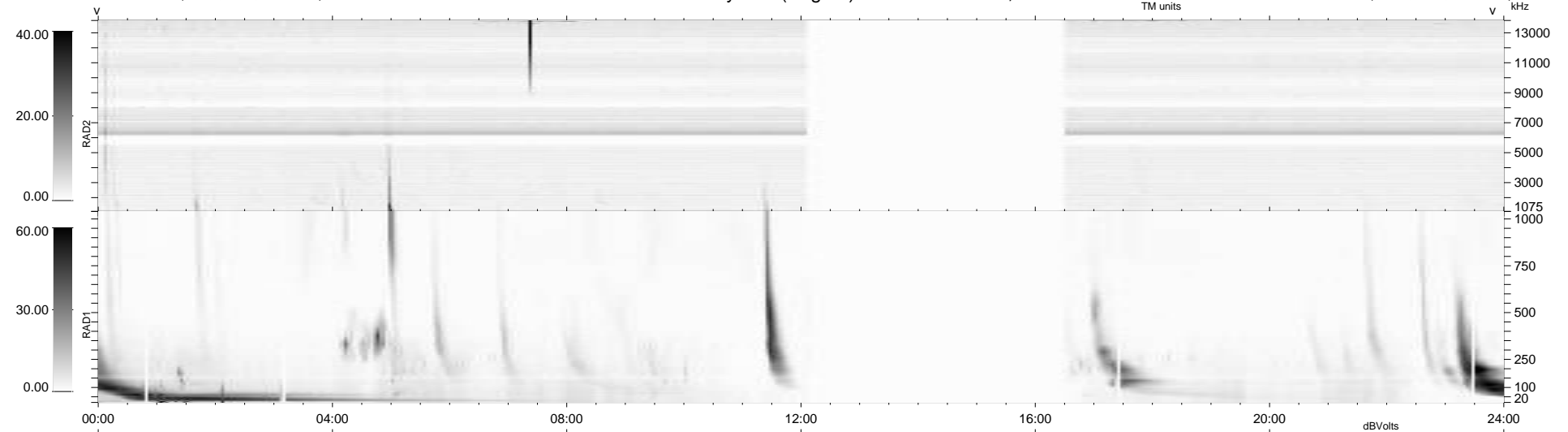


20 bad + 747 good MF/939MF projected (79%) - 172 missing MFs
 Avg interval = 180 secs
 Re = 260.94 (257.89, 35.29, 18.36 GSE)

windlib 2.0b LZ version = v01
 DAILY 2013-10-11 05:46:04
 Re = 260.83 (258.17, 32.10, 18.68 GSE)

WIND/WAVES Summary Plot (Page 1) for 10-OCT-2013, DOY = 283



RAD2 Antenna Ey
 Mode LIN(1)
 SUM/SEP SEP
 Toggle OFF
 RAD1 Antenna Ex
 Mode LIS(2,4)
 SUM/SEP SUM
 Toggle OFF
 TNR Antenna ExEy
 Mode A-32
 Sweep ACE