

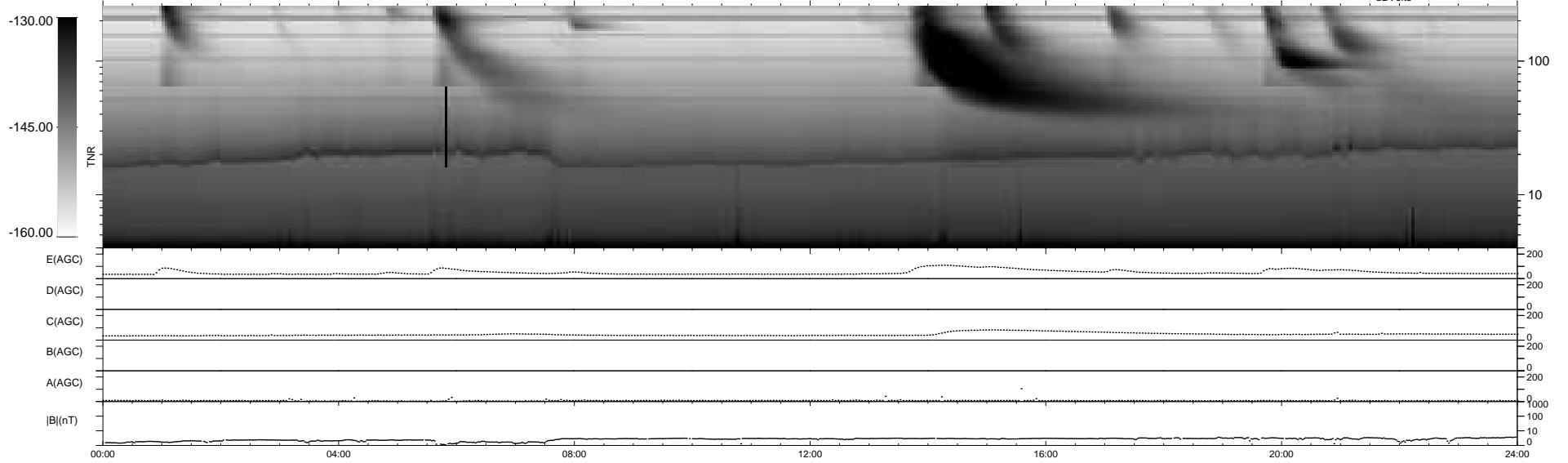
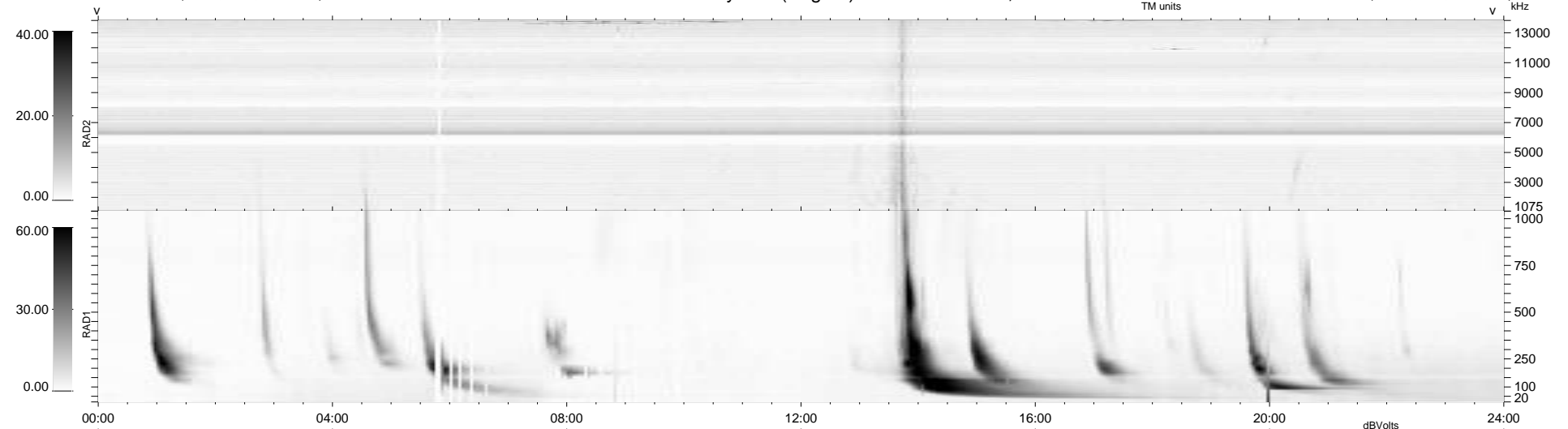
28 bad + 911 good MF/939MF projected (97%) - 0 missing MFs
 Avg interval = 180 secs
 Re = 260.95 (256.05, 47.41, 16.87 GSE)

windlib 2.0b

LZ version = v01

WIND/WAVES Summary Plot (Page 1) for 06-OCT-2013, DOY = 279

DAILY 2013-10-07 19:46:03
 Re = 261.02 (256.62, 44.50, 17.27 GSE)



RAD2
 Antenna Ey
 Mode LIN(1)
 SUM/SEP SEP
 Toggle OFF
 RAD1
 Antenna Ex
 Mode LIS(2,4)
 SUM/SEP SUM
 Toggle OFF
 TNR
 Antenna ExEy
 Mode A-32
 Sweep ACE