

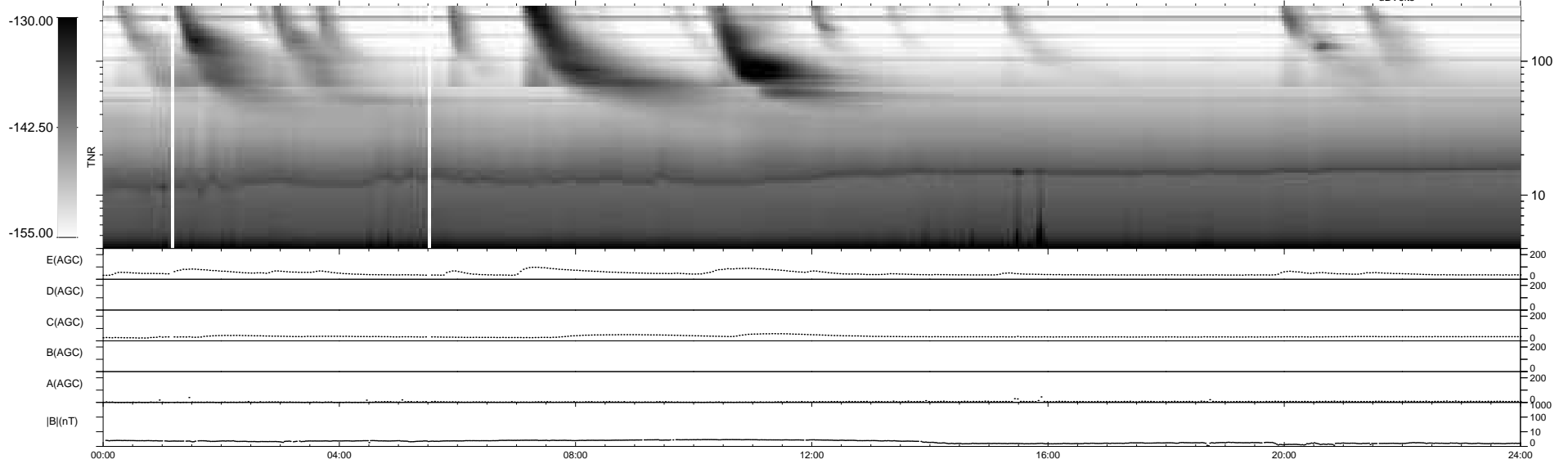
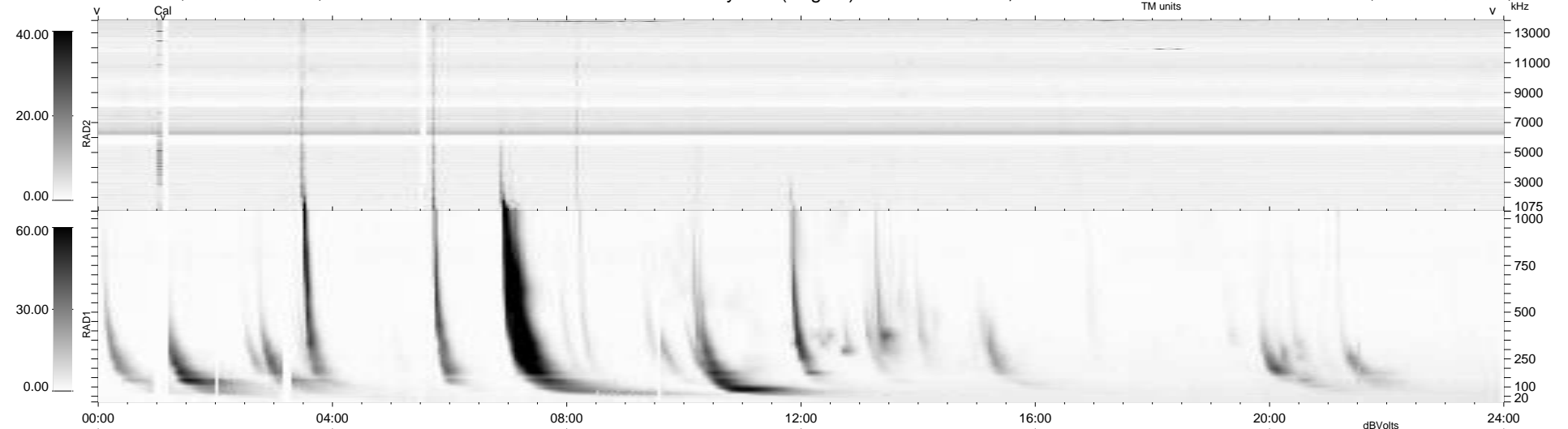
25 bad + 914 good MF/939MF projected (97%) - 0 missing MFs
 Avg interval = 180 secs
 Re = 260.82 (255.40, 50.27, 16.46 GSE)

windlib 2.0b

LZ version = v02

WIND/WAVES Summary Plot (Page 1) for 05-OCT-2013, DOY = 278

DAILY 2013-10-08 09:46:03
 Re = 260.95 (256.05, 47.43, 16.87 GSE)



```

RAD2
Antenna Ey .....
Mode LIN(1) .....
SUM/SEP SEP .....
Toggle OFF .....

RAD1
Antenna Ex .....
Mode LIS(2,4) .....
SUM/SEP SUM .....
Toggle OFF .....

TNR
Antenna ExEy .....
Mode A-32 .....
Sweep ACE .....
  
```