

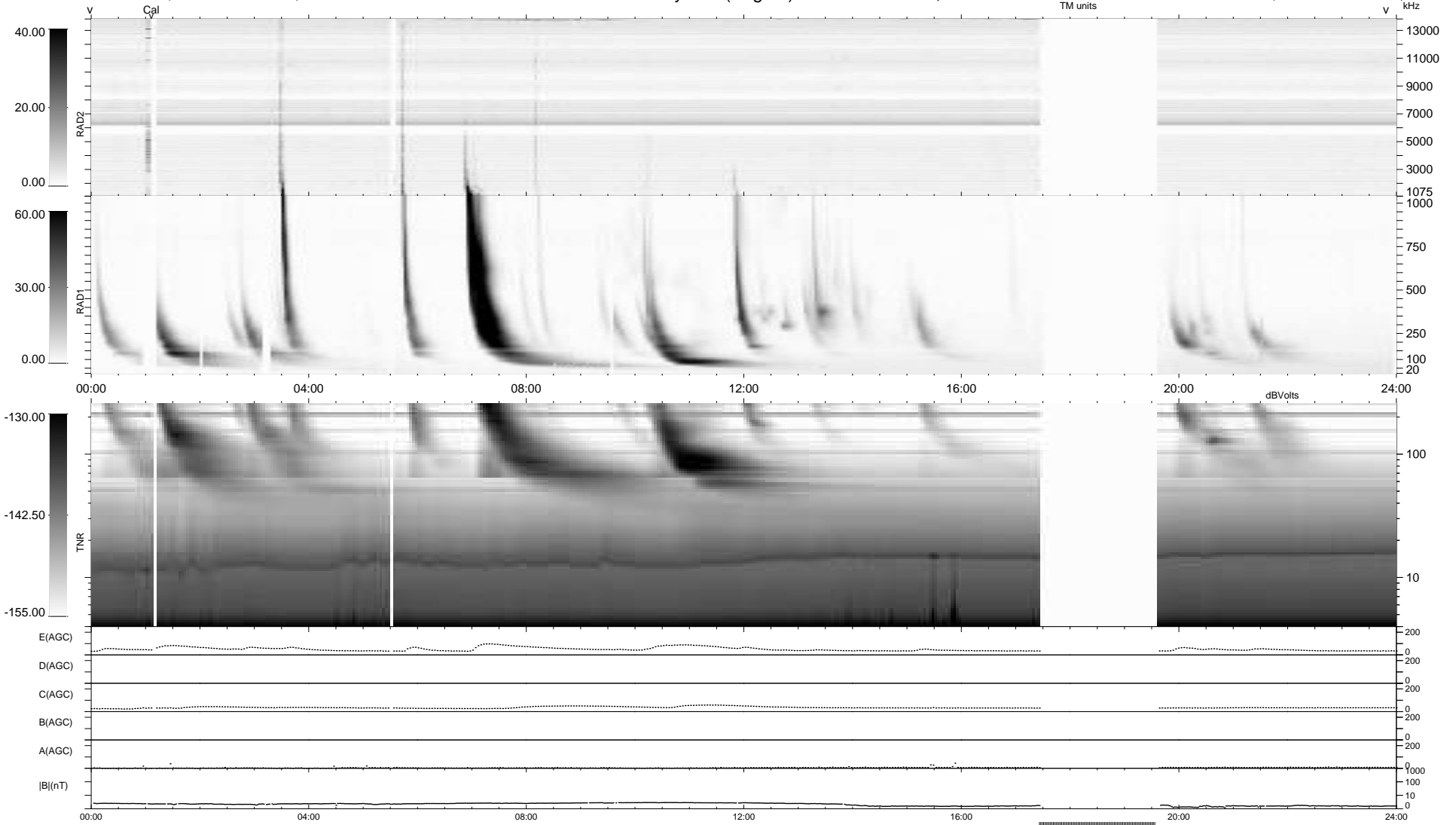
26 bad + 829 good MF/939MF projected (88%) - 84 missing MFs
 Avg interval = 180 secs
 Re = 260.82 (255.40, 50.27, 16.46 GSE)

windlib 2.0b

LZ version = v01

WIND/WAVES Summary Plot (Page 1) for 05-OCT-2013, DOY = 278

DAILY 2013-10-07 02:46:03
 Re = 260.95 (256.05, 47.43, 16.87 GSE)



```

RAD2
Antenna  Ey .....
Mode     LIN(1) .....
SUM/SEP  SEP .....
Toggle   OFF .....

RAD1
Antenna  Ex .....
Mode     LIS(2,4) .....
SUM/SEP  SUM .....
Toggle   OFF .....

TNR
Antenna  ExEy .....
Mode     A-32 .....
Sweep    ACE .....
  
```