

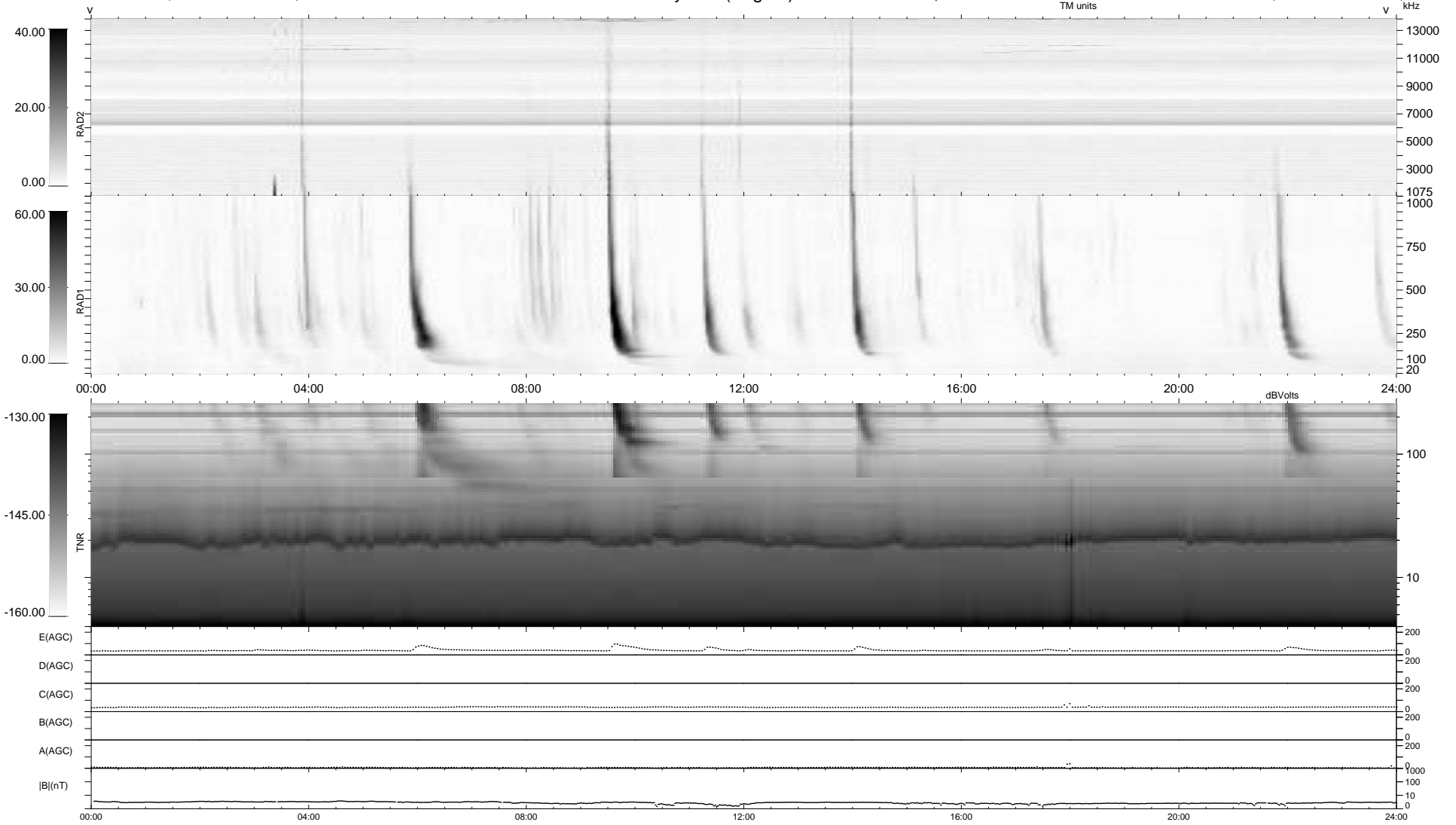
16 bad + 923 good MF/939MF projected (98%) - 0 missing MFs  
Avg interval = 180 secs  
Re = 257.80 (246.78, 73.58, 12.18 GSE)

windlib 2.0b

LZ version = v01

### WIND/WAVES Summary Plot (Page 1) for 26-SEP-2013, DOY = 269

DAILY 2013-09-27 13:46:04  
Re = 258.24 (247.90, 71.22, 12.69 GSE)



RAD2  
Antenna Ey .....  
Mode LIN(1) .....  
SUM/SEP SEP .....  
Toggle OFF .....  
RAD1  
Antenna .....  
Mode .....  
SUM/SEP .....  
Toggle .....  
TNR  
Antenna ExEy .....  
Mode A-32 .....  
Sweep ACE .....