

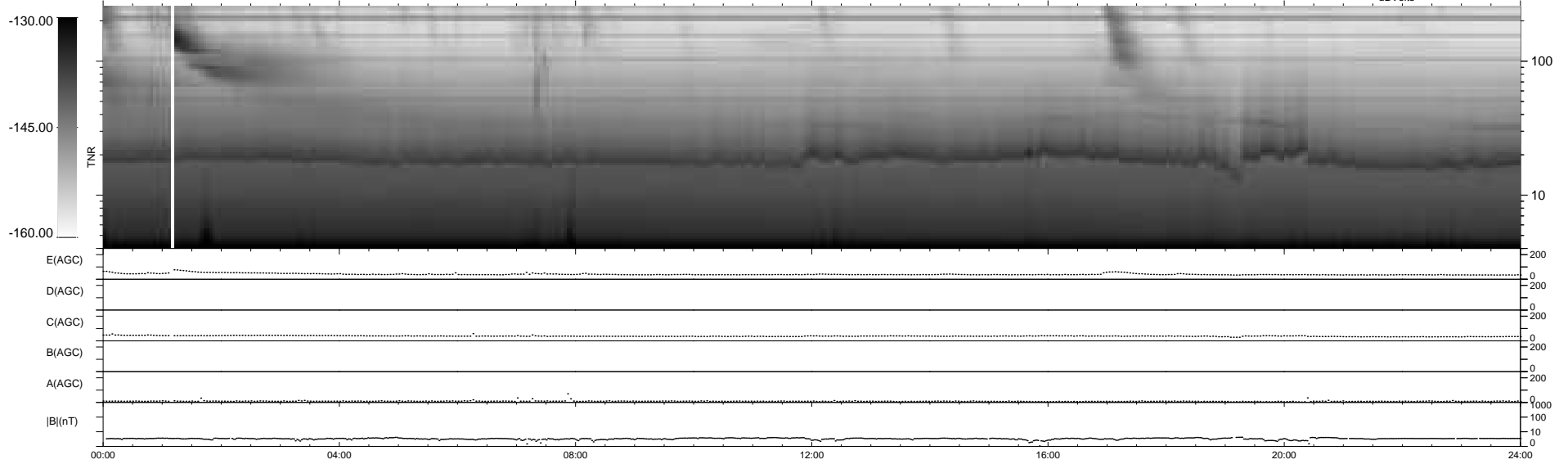
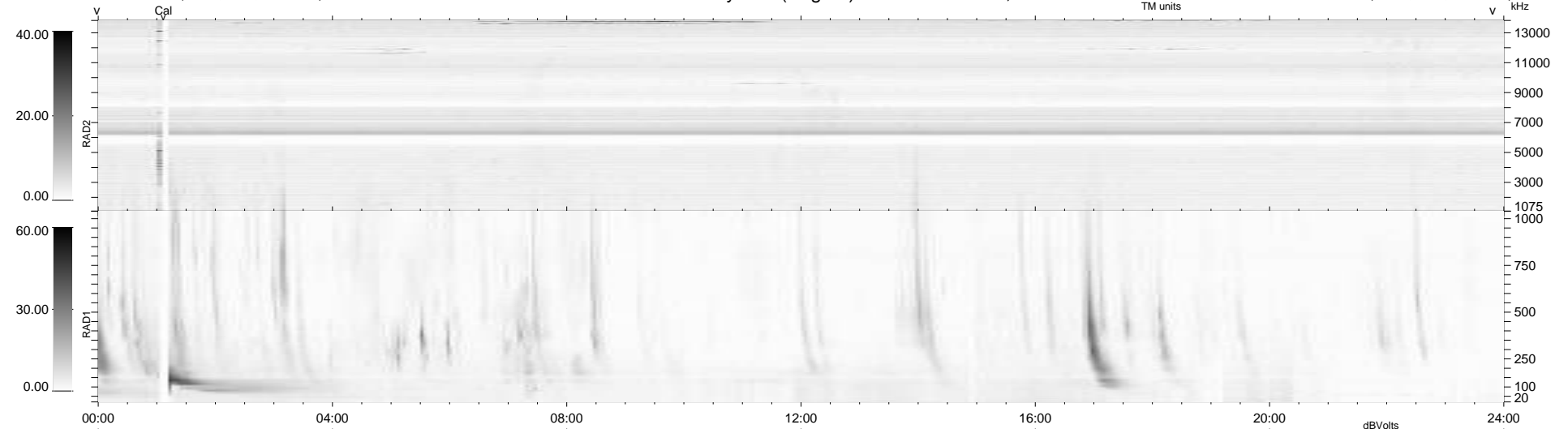
11 bad + 928 good MF/939MF projected (98%) - 0 missing MFs
 Avg interval = 180 secs
 Re = 257.36 (245.63, 75.91, 11.65 GSE)

windlib 2.0b

LZ version = v01

WIND/WAVES Summary Plot (Page 1) for 25-SEP-2013, DOY = 268

DAILY 2013-09-26 15:46:04
 Re = 257.80 (246.77, 73.60, 12.17 GSE)



```

RAD2
Antenna Ey .....
Mode LIN(1) .....
SUM/SEP SEP .....
Toggle OFF .....

RAD1
Antenna Ex .....
Mode LIS(2,4) .....
SUM/SEP SUM .....
Toggle OFF .....

TNR
Antenna ExEy .....
Mode A-32 .....
Sweep ACE .....
  
```