

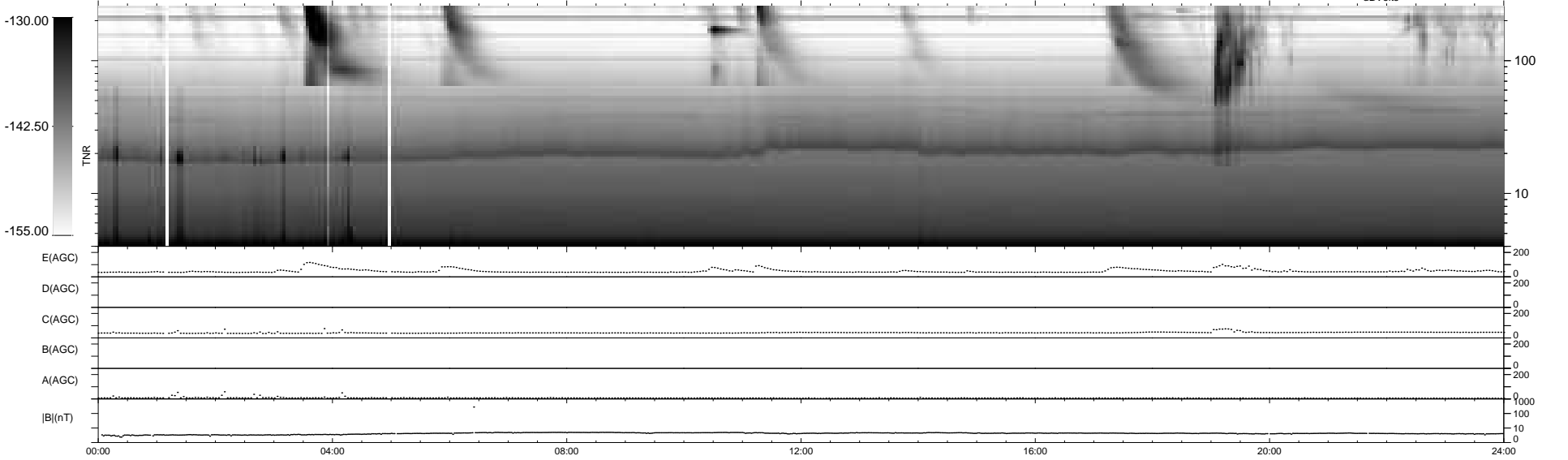
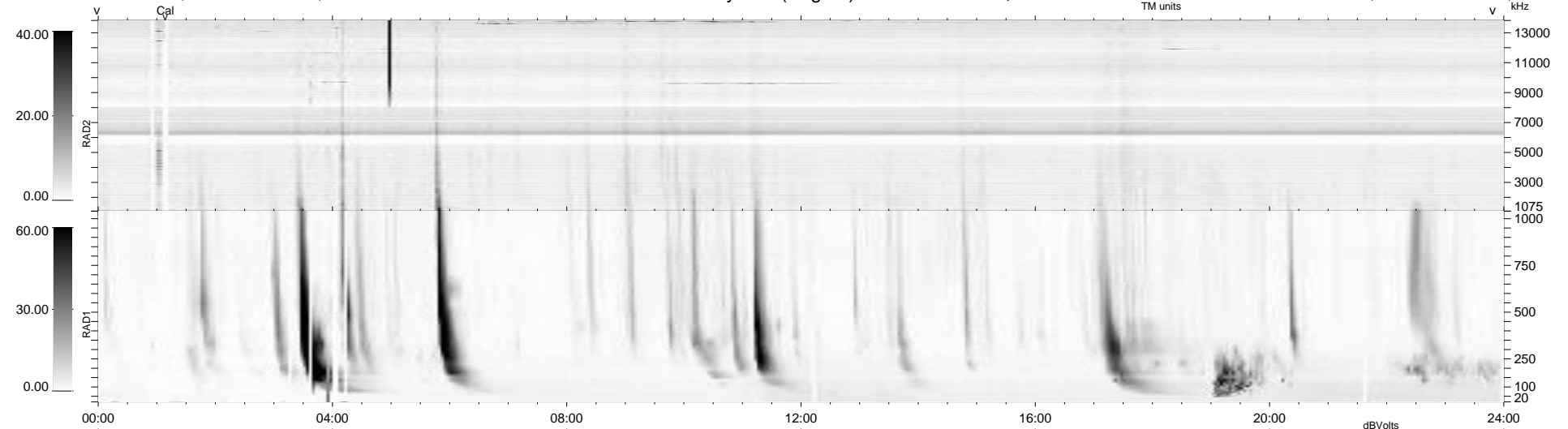
24 bad + 915 good MF/939MF projected (97%) - 0 missing MFs
 Avg interval = 180 secs
 Re = 256.45 (243.30, 80.35, 10.63 GSE)

windlib 2.0b

LZ version = v02

WIND/WAVES Summary Plot (Page 1) for 23-SEP-2013, DOY = 266

DAILY 2013-09-25 15:46:04
 Re = 256.90 (244.46, 78.18, 11.11 GSE)



00:00 04:00 08:00 12:00 16:00 20:00 24:00

RAD2 Antenna Ey
 Mode LIN(1)
 SUM/SEP SEP
 Toggle OFF
 RAD1 Antenna Ex
 Mode LIS(2,4)
 SUM/SEP SUM
 Toggle OFF
 TNR Antenna ExEy
 Mode A-32
 Sweep ACE