

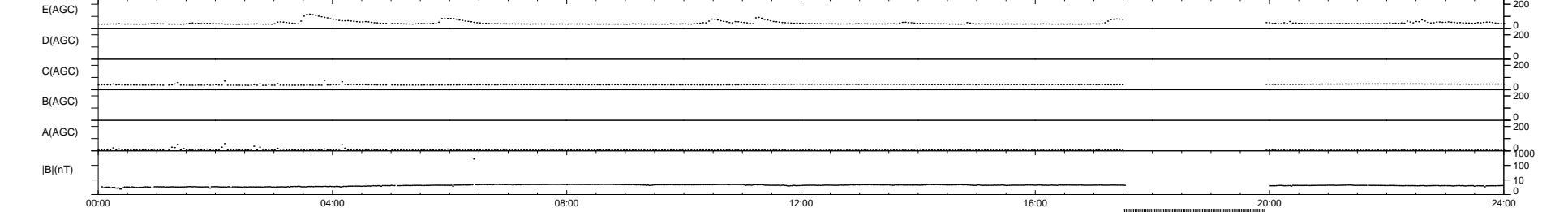
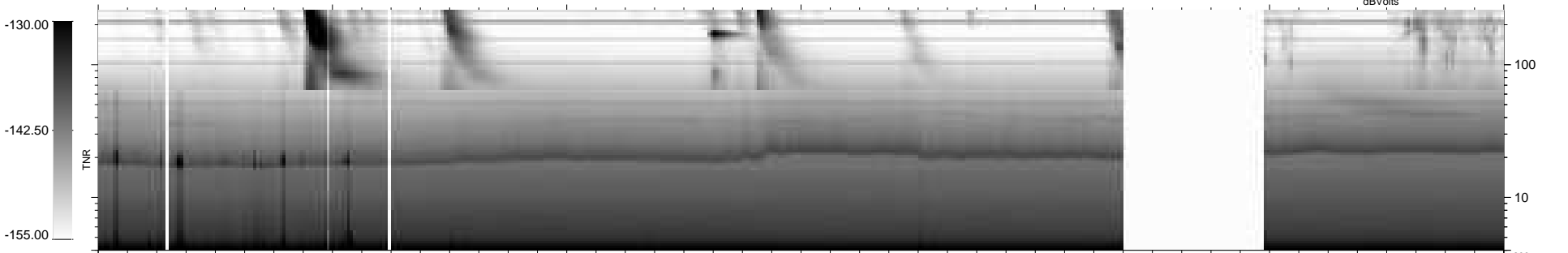
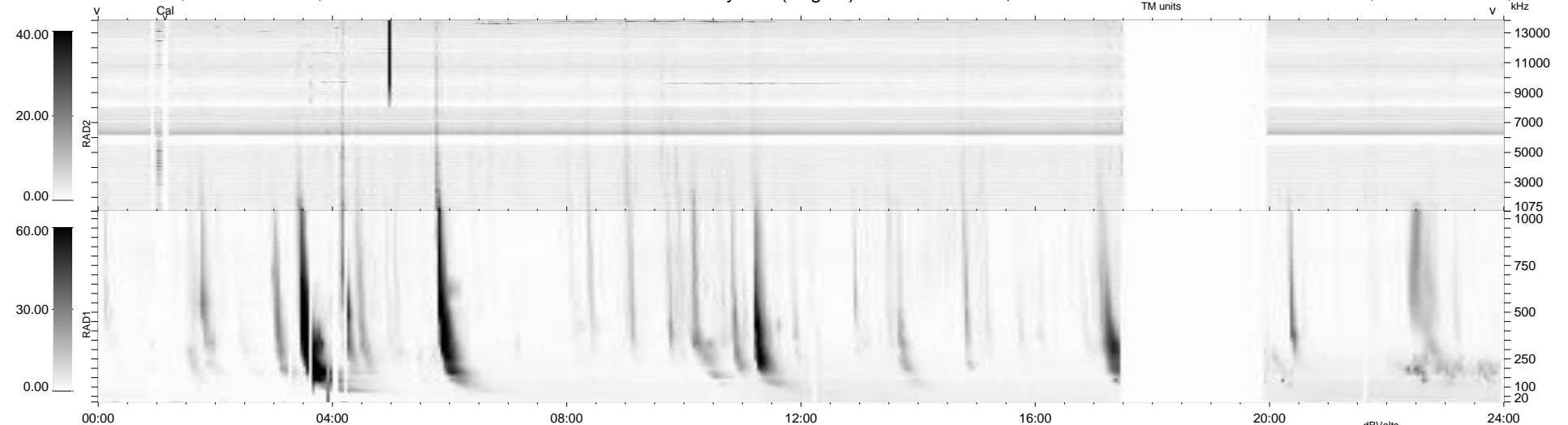
24 bad + 820 good MF/939MF projected (87%) - 95 missing MFs  
 Avg interval = 180 secs  
 Re = 256.45 (243.30, 80.35, 10.63 GSE)

windlib 2.0b

LZ version = v01

### WIND/WAVES Summary Plot (Page 1) for 23-SEP-2013, DOY = 266

DAILY 2013-09-24 19:46:05  
 Re = 256.90 (244.46, 78.18, 11.11 GSE)



```

RAD2
Antenna Ey .....
Mode LIN(1) .....
SUM/SEP SEP .....
Toggle OFF .....

RAD1
Antenna Ex .....
Mode LIS(2,4) .....
SUM/SEP SUM .....
Toggle OFF .....

TNR
Antenna ExEy .....
Mode A-32 .....
Sweep ACE .....
  
```