

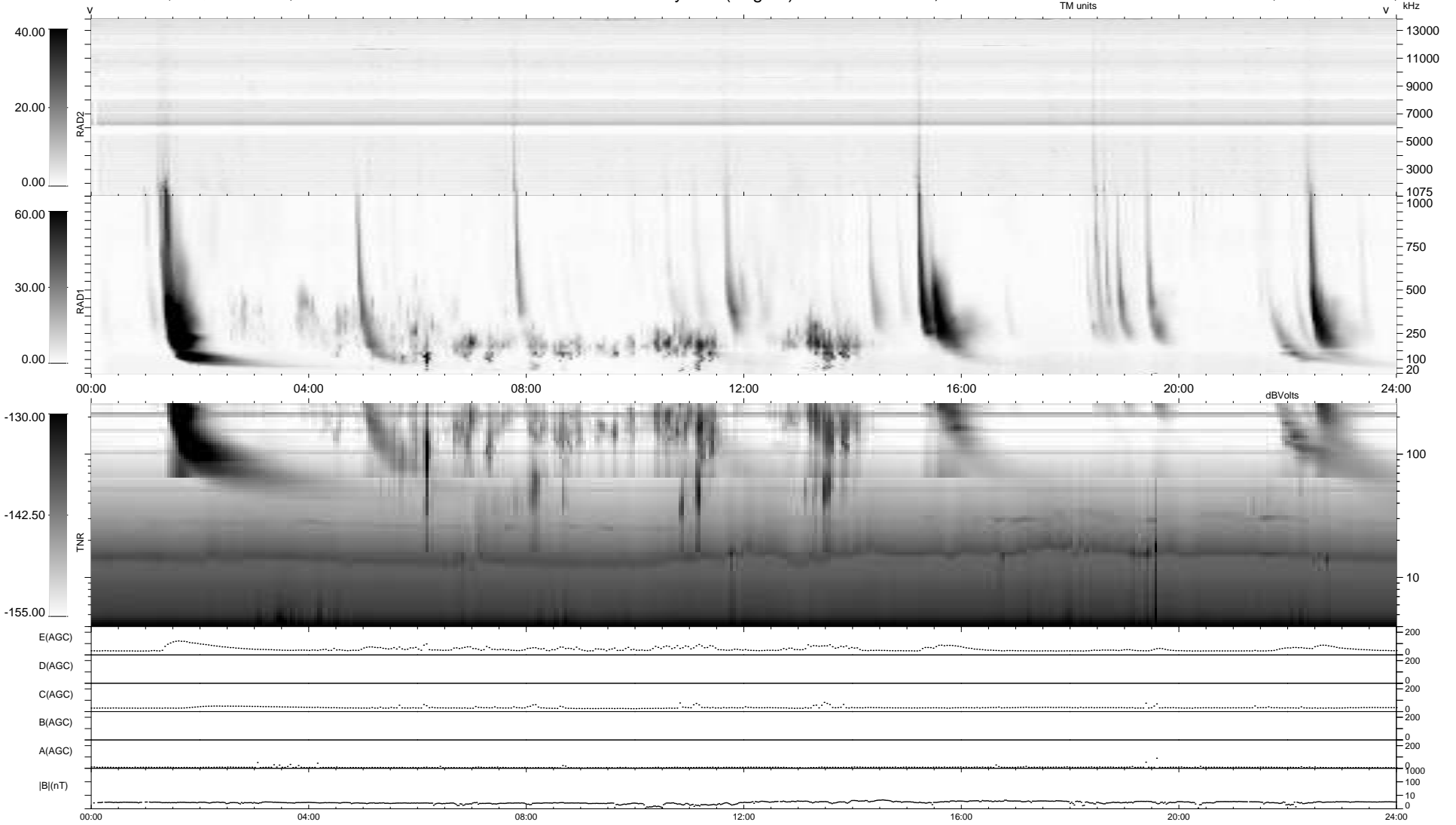
9 bad + 930 good MF/939MF projected (99%) - 0 missing MFs  
 Avg interval = 180 secs  
 Re = 255.12 (239.85, 86.48, 8.85 GSE)

windlib 2.0b

LZ version = v01

### WIND/WAVES Summary Plot (Page 1) for 20-SEP-2013, DOY = 263

DAILY 2013-09-21 14:46:04  
 Re = 255.55 (240.98, 84.54, 9.43 GSE)



RAD2 Antenna Ey .....  
 Mode LIN(1) .....  
 SUM/SEP SEP .....  
 Toggle OFF .....  
 RAD1 Antenna .....  
 Mode .....  
 SUM/SEP .....  
 Toggle .....  
 TNR Antenna ExEy .....  
 Mode A-32 .....  
 Sweep ACE .....