

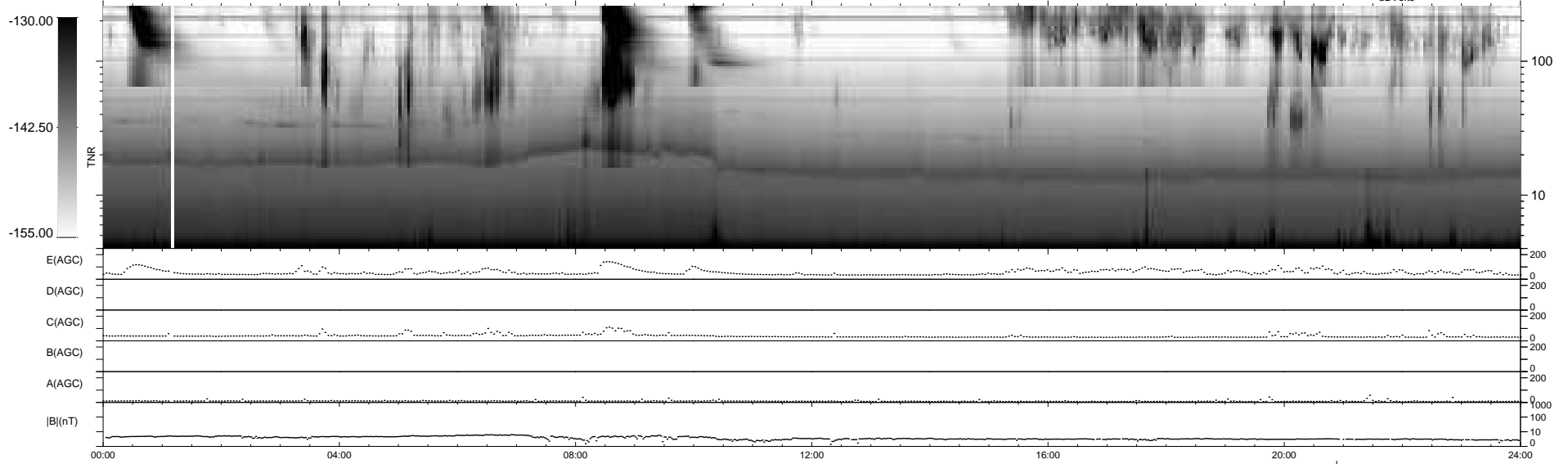
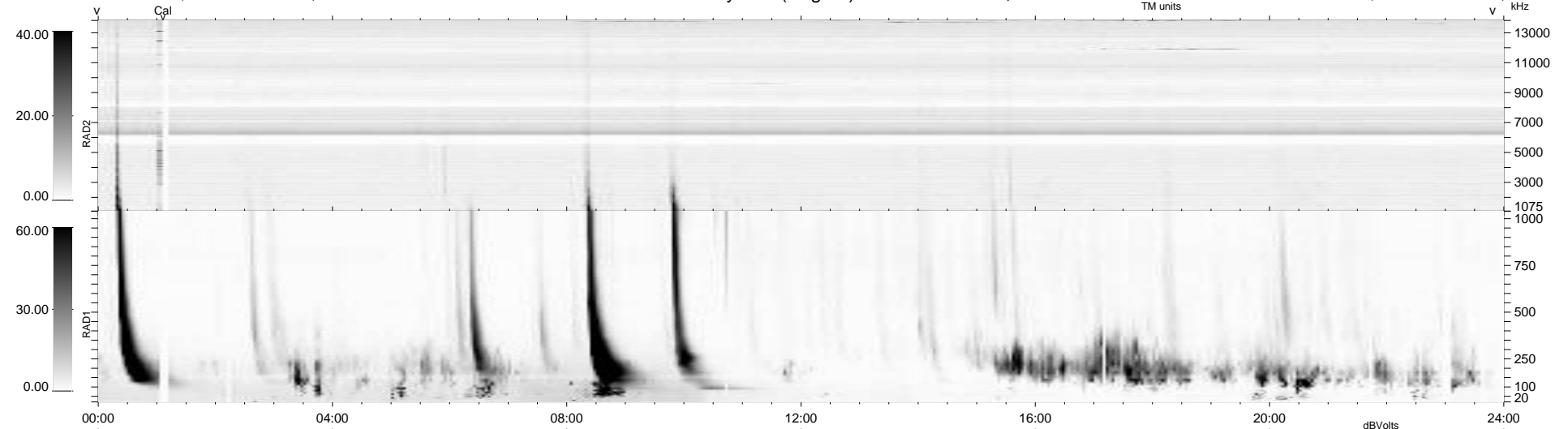
16 bad + 922 good MF/939MF projected (98%) - 1 missing MF
 Avg interval = 180 secs
 Re = 254.69 (238.73, 88.33, 8.27 GSE)

windlib 2.0b

LZ version = v01

WIND/WAVES Summary Plot (Page 1) for 19-SEP-2013, DOY = 262

DAILY 2013-09-23 10:47:01
 Re = 255.12 (239.84, 86.49, 8.85 GSE)



```

RAD2
Antenna Ey .....
Mode LIN(1) .....
SUM/SEP SEP .....
Toggle OFF .....

RAD1
Antenna Ex .....
Mode LIS(2,4) .....
SUM/SEP SUM .....
Toggle OFF .....

TNR
Antenna ExEy .....
Mode A-32 .....
Sweep ACE .....
  
```