

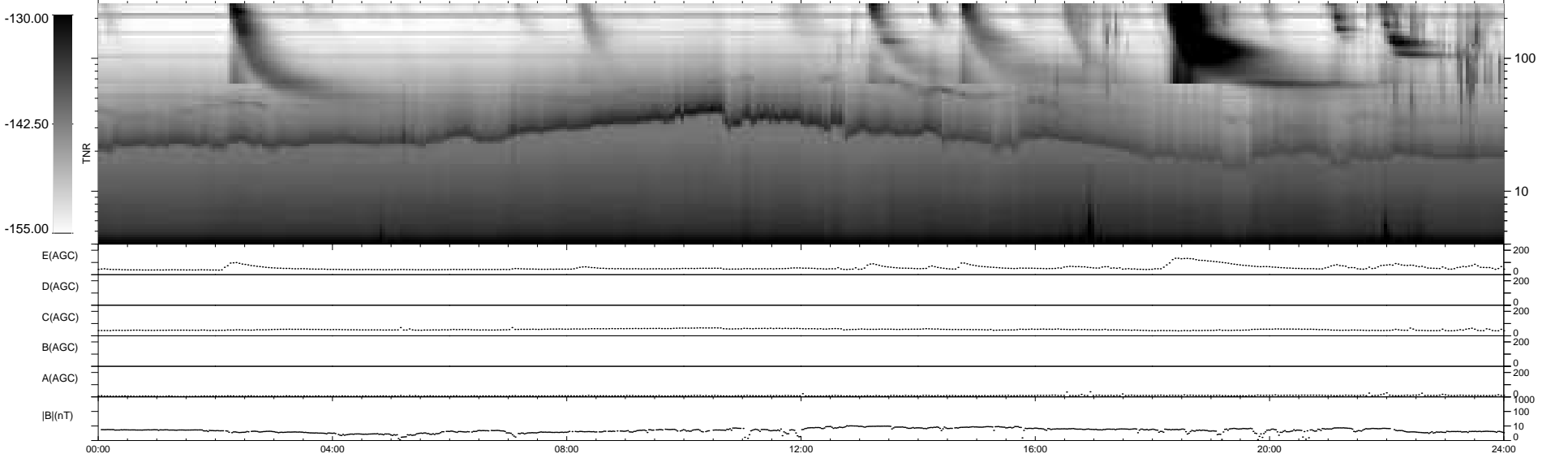
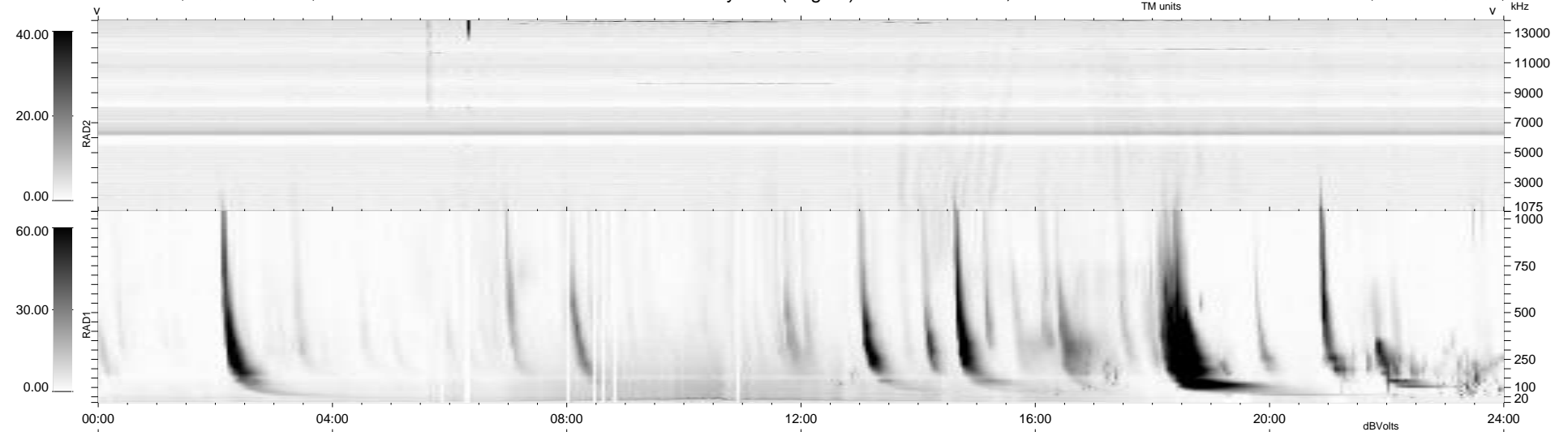
26 bad + 913 good MF/939MF projected (97%) - 0 missing MFs
 Avg interval = 180 secs
 Re = 254.26 (237.64, 90.08, 7.67 GSE)

windlib 2.0b

LZ version = v01

WIND/WAVES Summary Plot (Page 1) for 18-SEP-2013, DOY = 261

DAILY 2013-09-23 10:46:04
 Re = 254.68 (238.73, 88.35, 8.26 GSE)



RAD2
 Antenna Ey
 Mode LIN(1)
 SUM/SEP SEP
 Toggle OFF

RAD1
 Antenna Ex
 Mode LIS(2,4)
 SUM/SEP SUM
 Toggle OFF

TNR
 Antenna ExEy
 Mode A-32
 Sweep ACE