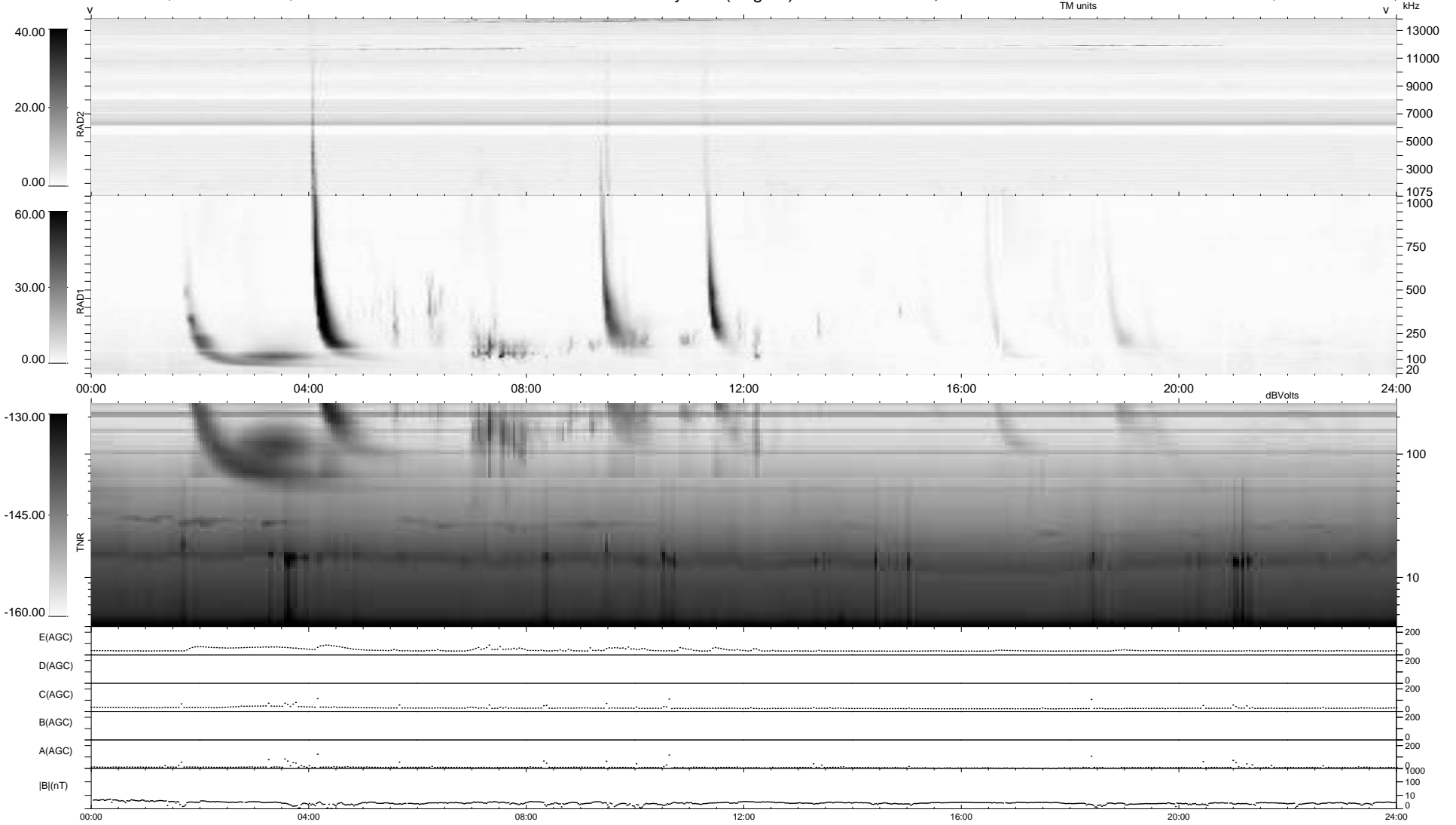


7 bad + 933 good MF/940MF projected (99%) - 0 missing MFs  
 Avg interval = 180 secs  
 Re = 252.45 (233.50, 95.83, 5.16 GSE)

windlib 2.0b LZ version = v02  
 DAILY 2013-09-17 10:46:04  
 Re = 252.93 (234.50, 94.60, 5.80 GSE)

### WIND/WAVES Summary Plot (Page 1) for 14-SEP-2013, DOY = 257



```

RAD2
Antenna Ey .....
Mode LIN(1) .....
SUM/SEP SEP .....
Toggle OFF .....

RAD1
Antenna Ex .....
Mode LIS(2,4) .....
SUM/SEP SUM .....
Toggle OFF .....

TNR
Antenna ExEy .....
Mode A-32 .....
Sweep ACE .....
  
```