

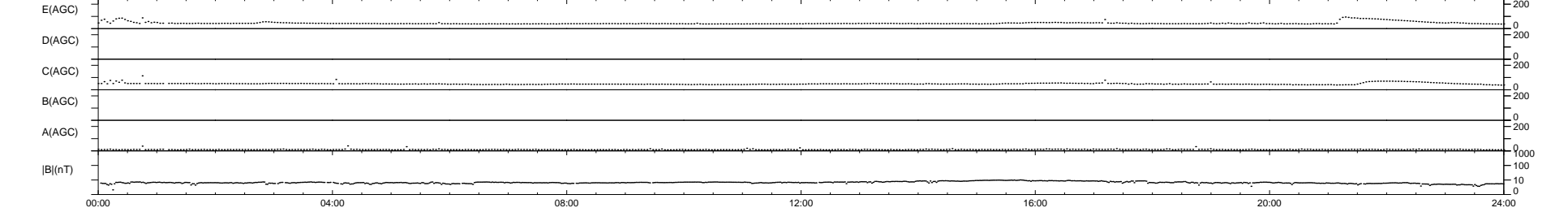
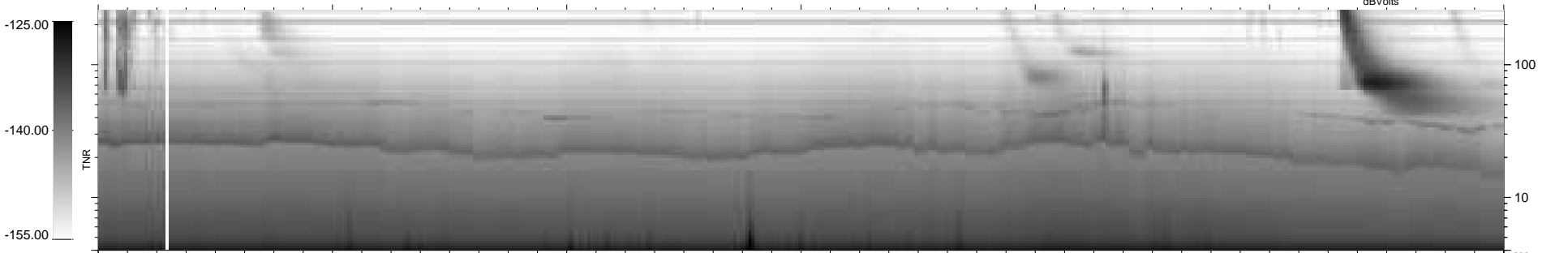
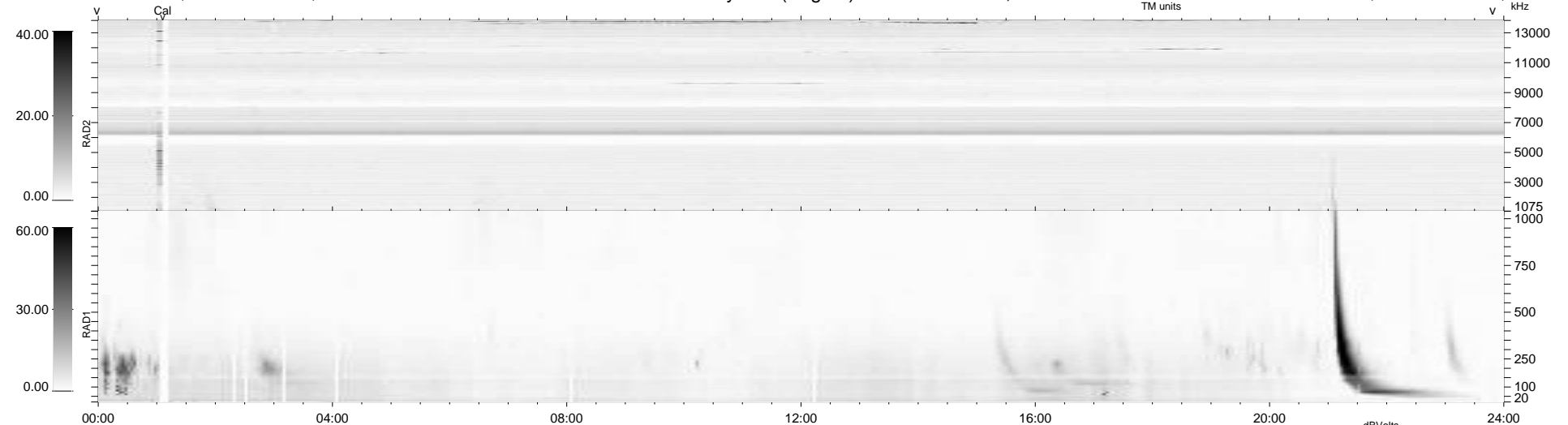
18 bad + 921 good MF/939MF projected (98%) - 0 missing MFs
 Avg interval = 180 secs
 Re = 251.93 (232.50, 96.91, 4.51 GSE)

windlib 2.0b

LZ version = v01

WIND/WAVES Summary Plot (Page 1) for 13-SEP-2013, DOY = 256

DAILY 2013-09-14 18:46:04
 Re = 252.44 (233.49, 95.83, 5.15 GSE)



```

RAD2
Antenna Ey .....
Mode LIN(1) .....
SUM/SEP SEP .....
Toggle OFF .....

RAD1
Antenna Ex .....
Mode LIS(2,4) .....
SUM/SEP SUM .....
Toggle OFF .....

TNR
Antenna ExEy .....
Mode A-32 .....
Sweep ACE .....
  
```