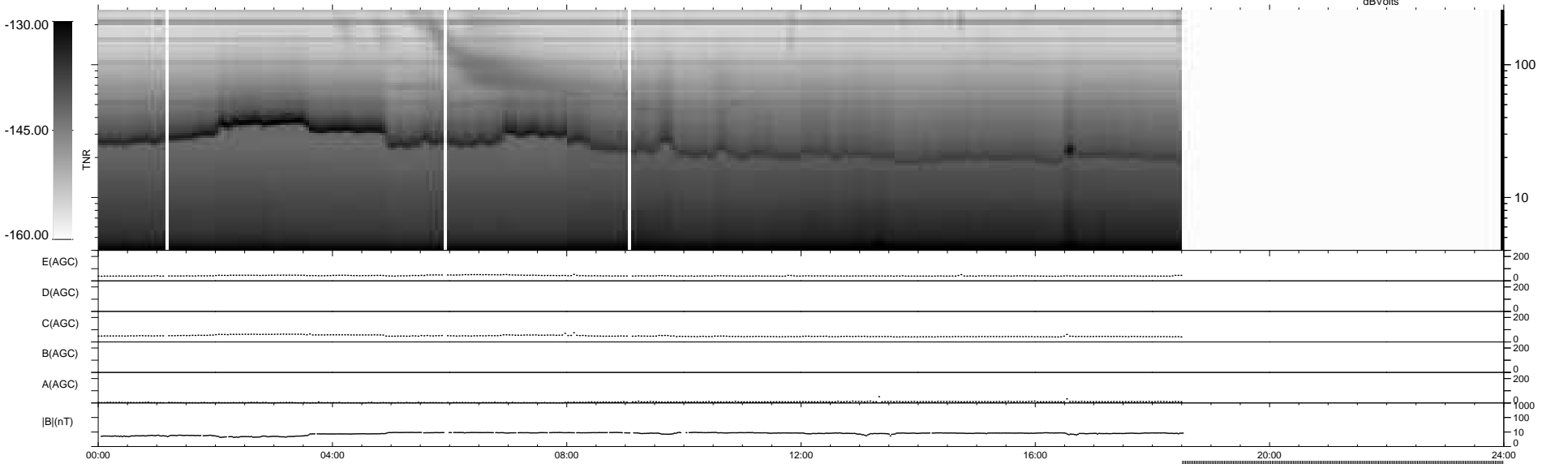
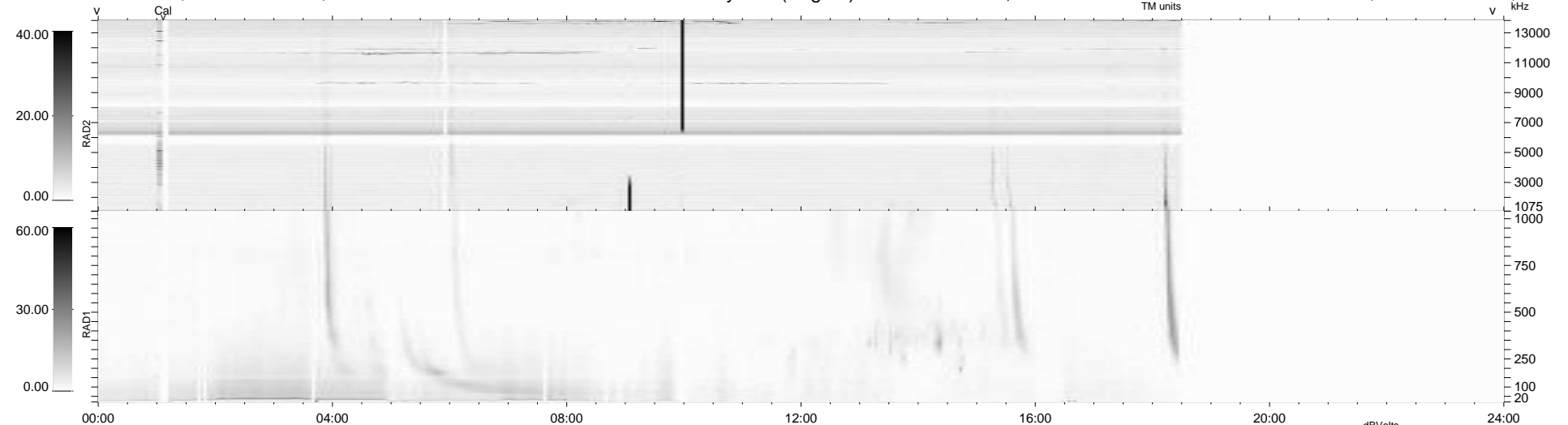


22 bad + 702 good MF/939MF projected (74%) - 215 missing MFs
 Avg interval = 180 secs
 Re = -243.53 (222.02, 100.05, -2.16 GSE)

windlib 2.0b LZ version = v01
 DAILY 2013-09-05 00:46:04
 Re = 244.63 (223.11, 100.30, -1.50 GSE)

WIND/WAVES Summary Plot (Page 1) for 03-SEP-2013, DOY = 246



```

RAD2
Antenna Ey .....
Mode LIN(1) .....
SUM/SEP SEP .....
Toggle OFF .....

RAD1
Antenna Ex .....
Mode LIS(2,4) .....
SUM/SEP SUM .....
Toggle OFF .....

TNR
Antenna ExEy .....
Mode A-32 .....
Sweep ACE .....
  
```