

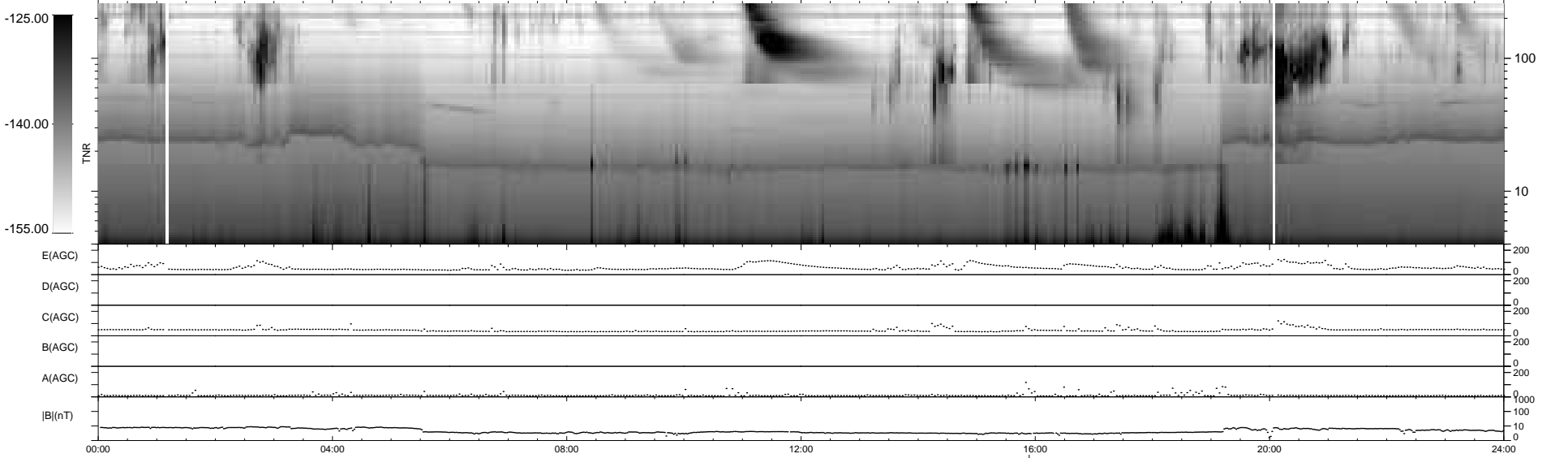
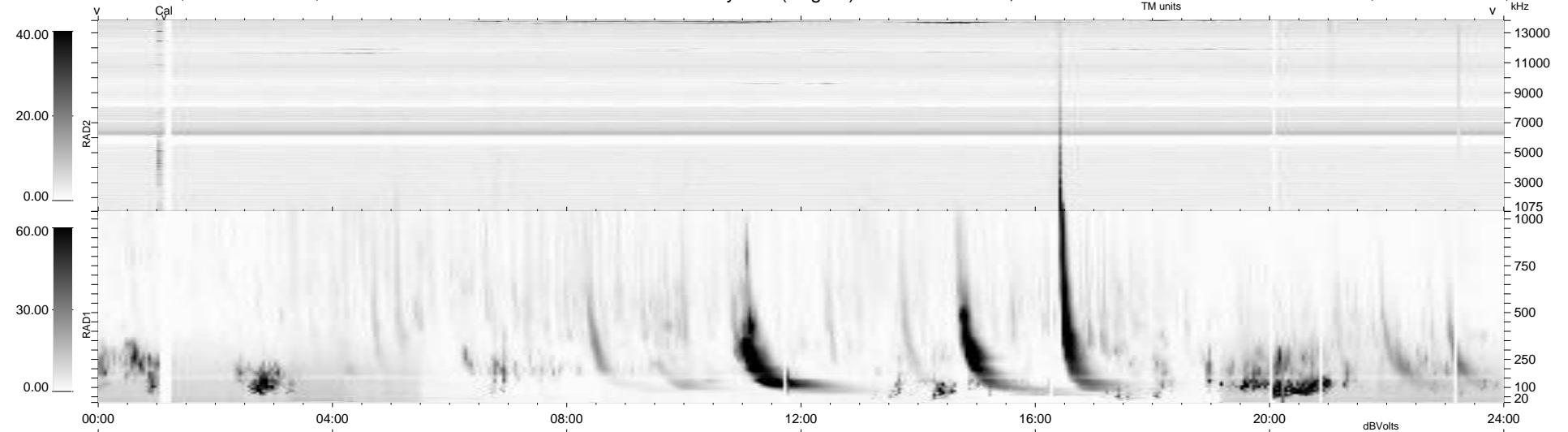
15 bad + 924 good MF/940MF projected (98%) - 1 missing MF  
 Avg interval = 180 secs  
 Re = 228.52 (209.98, 89.65, -9.52 GSE)

windlib 2.0b

LZ version = v01

WIND/WAVES Summary Plot (Page 1) for 22-AUG-2013, DOY = 234

DAILY 2013-08-23 03:46:05  
 Re = 229.74 (210.75, 91.01, -8.95 GSE)



RAD2  
 Antenna Ey .....  
 Mode LIN(1) .....  
 SUM/SEP SEP .....  
 Toggle OFF .....  
 RAD1  
 Antenna Ex .....  
 Mode LIS(2,4) .....  
 SUM/SEP SUM .....  
 Toggle OFF .....  
 TNR  
 Antenna ExEy .....  
 Mode A-32 .....  
 Sweep ACE .....