

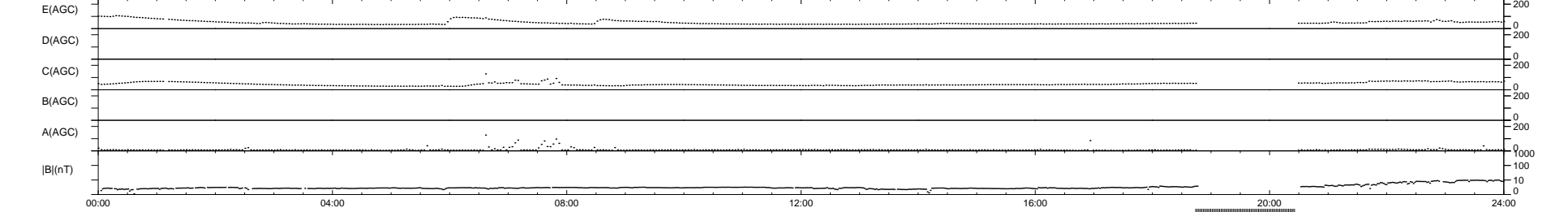
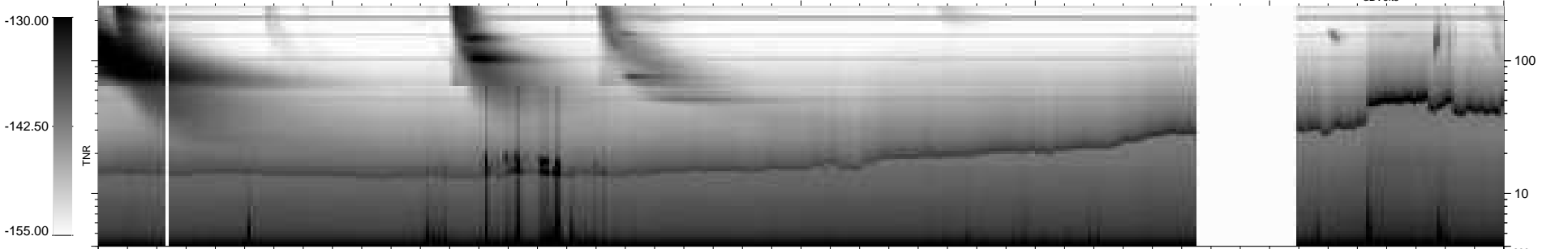
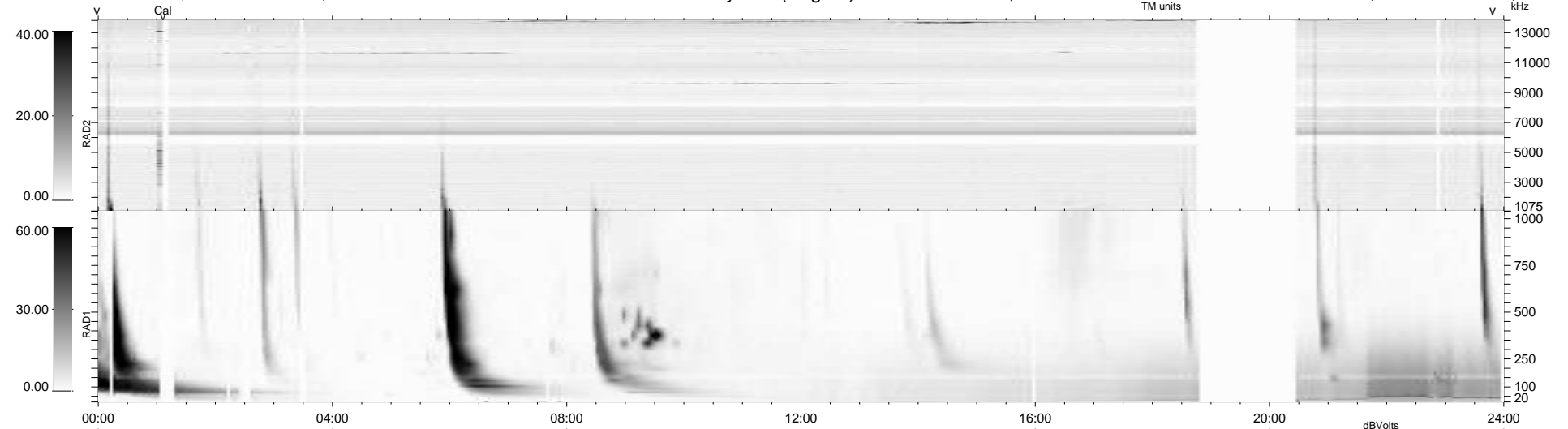
25 bad + 847 good MF/939MF projected (90%) - 67 missing MFs
 Avg interval = 180 secs
 Re = 226.14 (208.64, 86.58, -10.63 GSE)

windlib 2.0b

LZ version = v01

WIND/WAVES Summary Plot (Page 1) for 20-AUG-2013, DOY = 232

DAILY 2013-08-21 20:46:03
 Re = 227.31 (209.27, 88.16, -10.08 GSE)



```

RAD2
Antenna Ey .....
Mode LIN(1) .....
SUM/SEP SEP .....
Toggle OFF .....

RAD1
Antenna Ex .....
Mode LIS(2,4) .....
SUM/SEP SUM .....
Toggle OFF .....

TNR
Antenna ExEy .....
Mode A-32 .....
Sweep ACE .....
  
```