

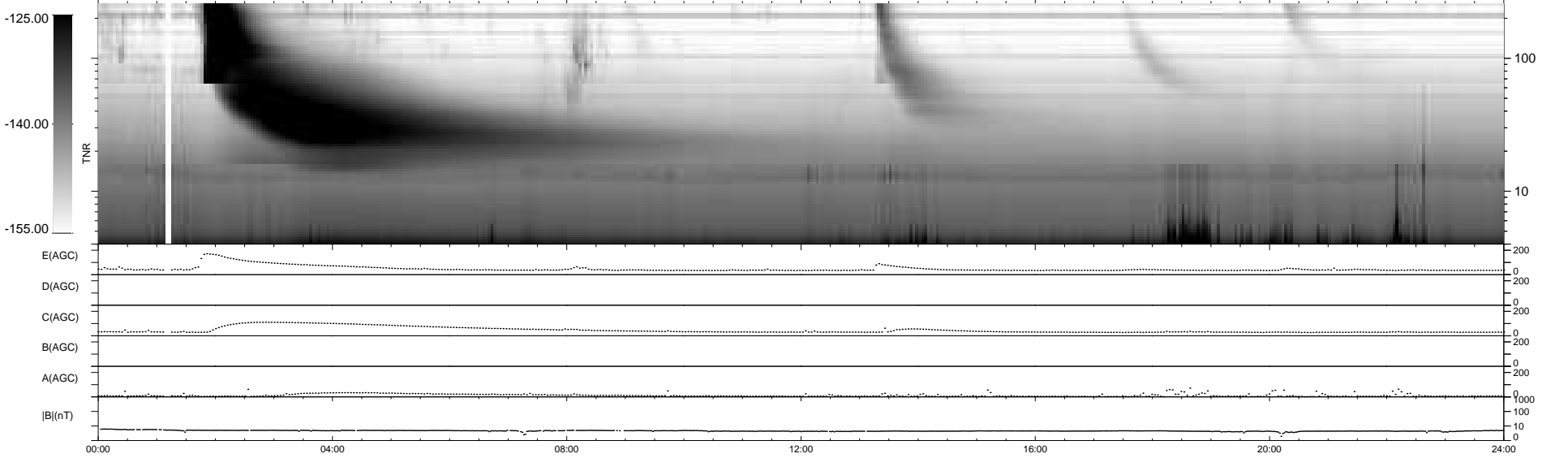
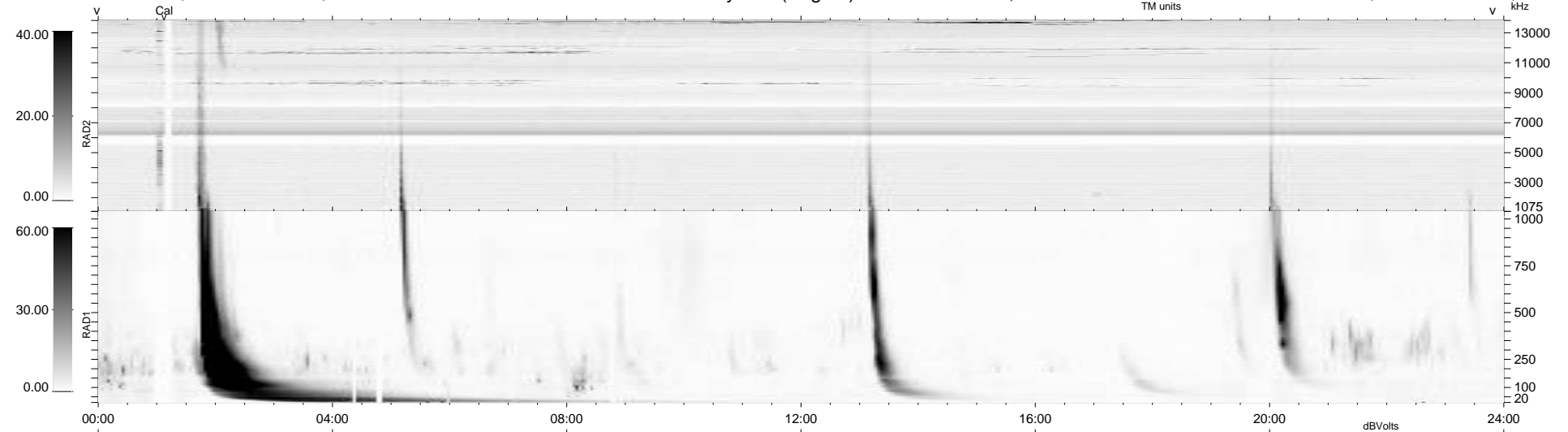
25 bad + 915 good MF/940MF projected (97%) - 0 missing MFs
 Avg interval = 180 secs
 Re = 211.20 (204.26, 51.04, -16.65 GSE)

windlib 2.0b

LZ version = v01

WIND/WAVES Summary Plot (Page 1) for 06-AUG-2013, DOY = 218

DAILY 2013-08-07 20:46:04
 Re = 212.23 (204.52, 54.26, -16.37 GSE)



RAD2	
Antenna	Ex
Mode	LIN(1)
SUM/SEP	SEP
Toggle	OFF
RAD1	
Antenna	Ex
Mode	LIS(2,4)
SUM/SEP	SUM
Toggle	OFF
TNR	
Antenna	ExEy
Mode	A-32
Sweep	ACE