

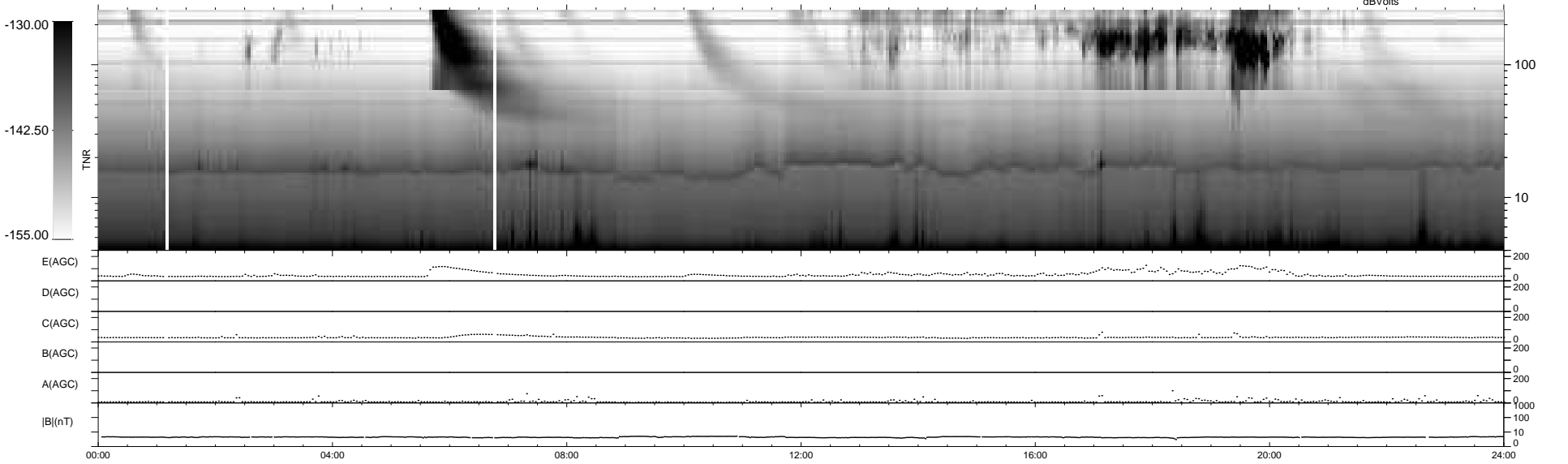
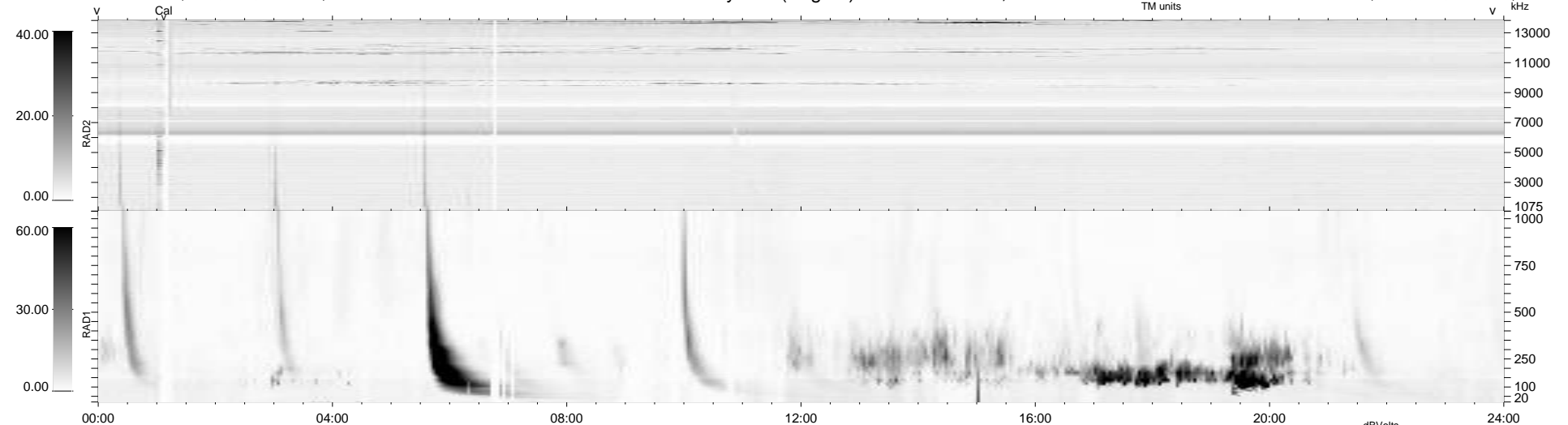
23 bad + 916 good MF/939MF projected (97%) - 0 missing MFs  
 Avg interval = 180 secs  
 Re = 205.68 (202.63, 30.51, -17.71 GSE)

windlib 2.0b

LZ version = v03

### WIND/WAVES Summary Plot (Page 1) for 31-JUL-2013, DOY = 212

DAILY 2013-08-05 12:46:04  
 Re = 206.48 (202.90, 34.00, -17.61 GSE)



RAD2  
 Antenna Ey  
 Mode LIN(1)  
 SUM/SEP SEP  
 Toggle OFF

RAD1  
 Antenna Ex  
 Mode LIS(2,4)  
 SUM/SEP SUM  
 Toggle OFF

TNR  
 Antenna ExEy  
 Mode A-32  
 Sweep ACE