

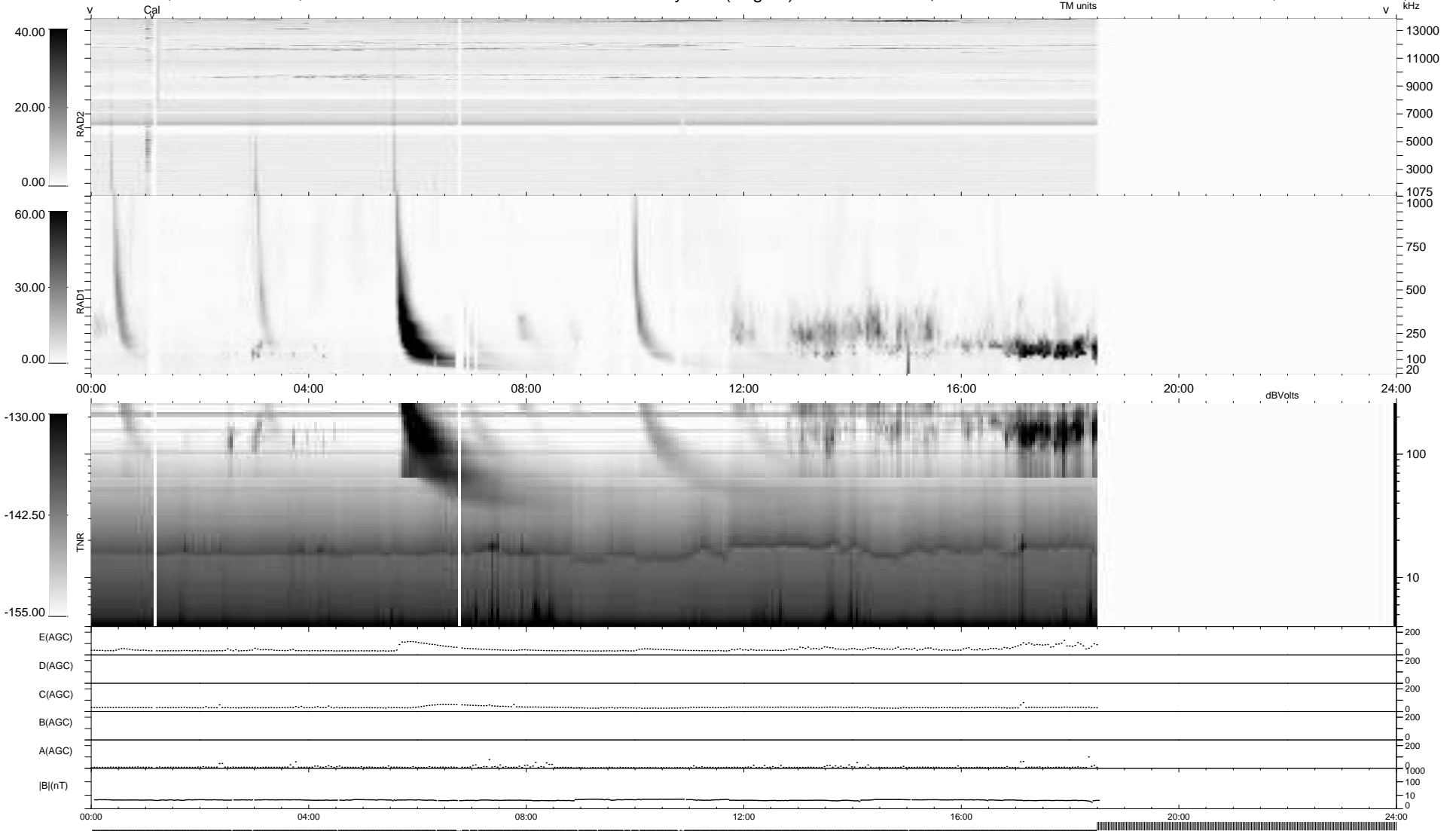
20 bad + 703 good MF/939MF projected (74%) - 216 missing MFs
 Avg interval = 180 secs
 Re = 205.68 (202.63, 30.51, -17.71 GSE)

windlib 2.0b

LZ version = v02

WIND/WAVES Summary Plot (Page 1) for 31-JUL-2013, DOY = 212

DAILY 2013-08-05 11:46:03
 Re = 206.48 (202.90, 34.00, -17.61 GSE)



```

RAD2
Antenna Ey .....
Mode LIN(1) .....
SUM/SEP SEP .....
Toggle OFF .....

RAD1
Antenna Ex .....
Mode LIS(2,4) .....
SUM/SEP SUM .....
Toggle OFF .....

TNR
Antenna ExEy .....
Mode A-32 .....
Sweep ACE .....
  
```