

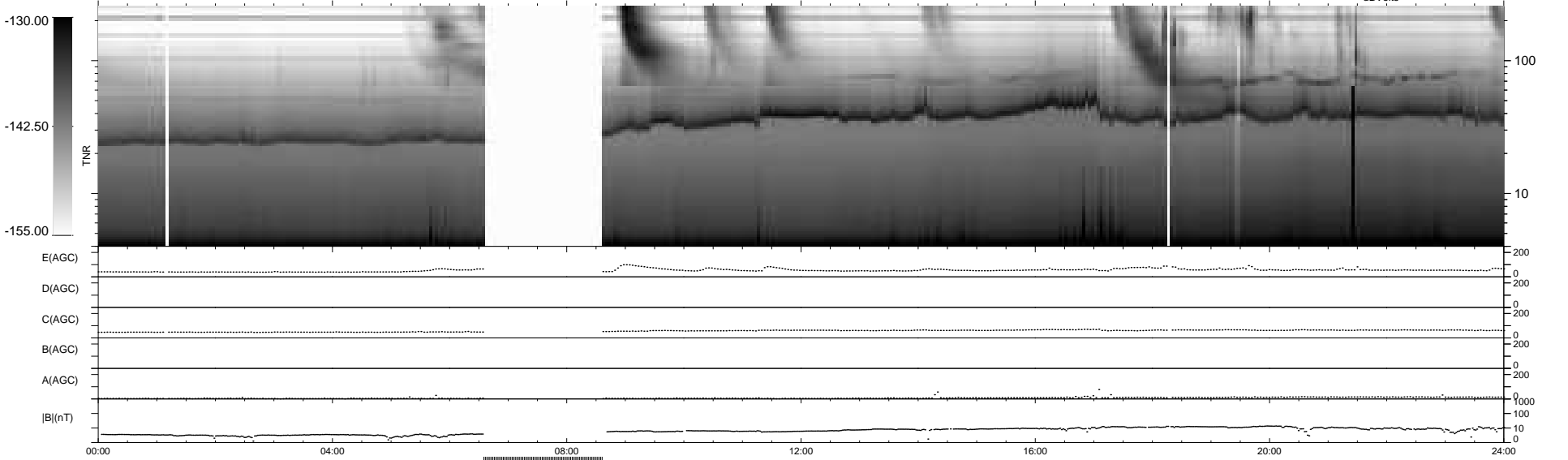
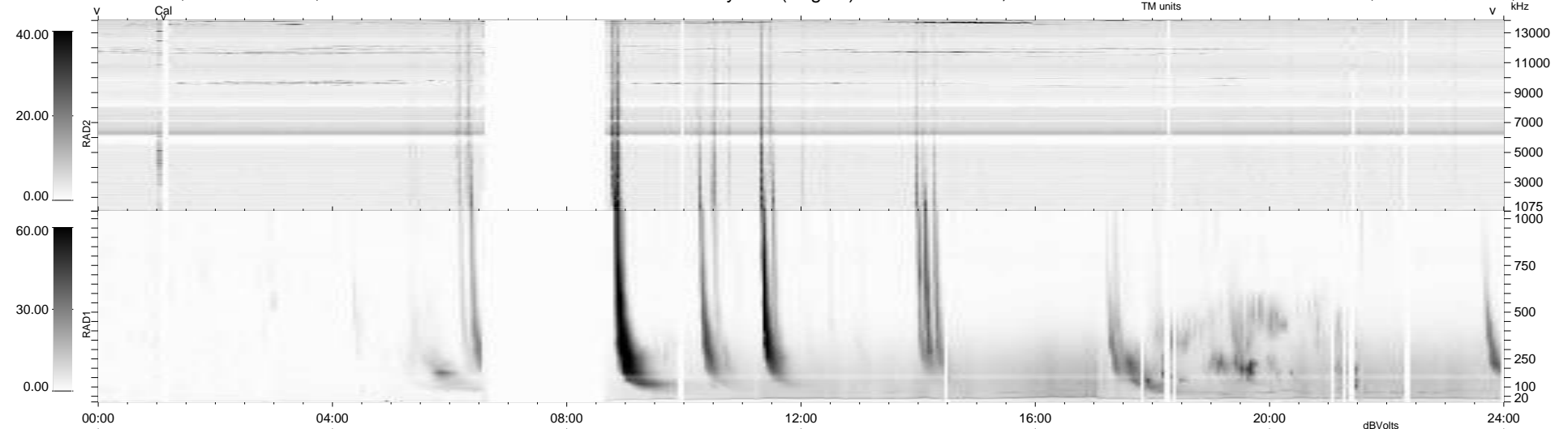
29 bad + 830 good MF/939MF projected (88%) - 80 missing MFs
 Avg interval = 180 secs
 Re = - 202.48 (201.48, 9.29, -17.73 GSE)

windlib 2.0b

LZ version = v01

WIND/WAVES Summary Plot (Page 1) for 25-JUL-2013, DOY = 206

DAILY 2013-07-26 08:46:04
 Re = 202.78 (201.60, 12.80, -17.80 GSE)



RAD2
 Antenna Ey
 Mode LIN(1)
 SUM/SEP SEP
 Toggle OFF

RAD1
 Antenna Ex
 Mode LIS(2,4)
 SUM/SEP SUM
 Toggle OFF

TNR
 Antenna ExEy
 Mode A-32
 Sweep ACE