

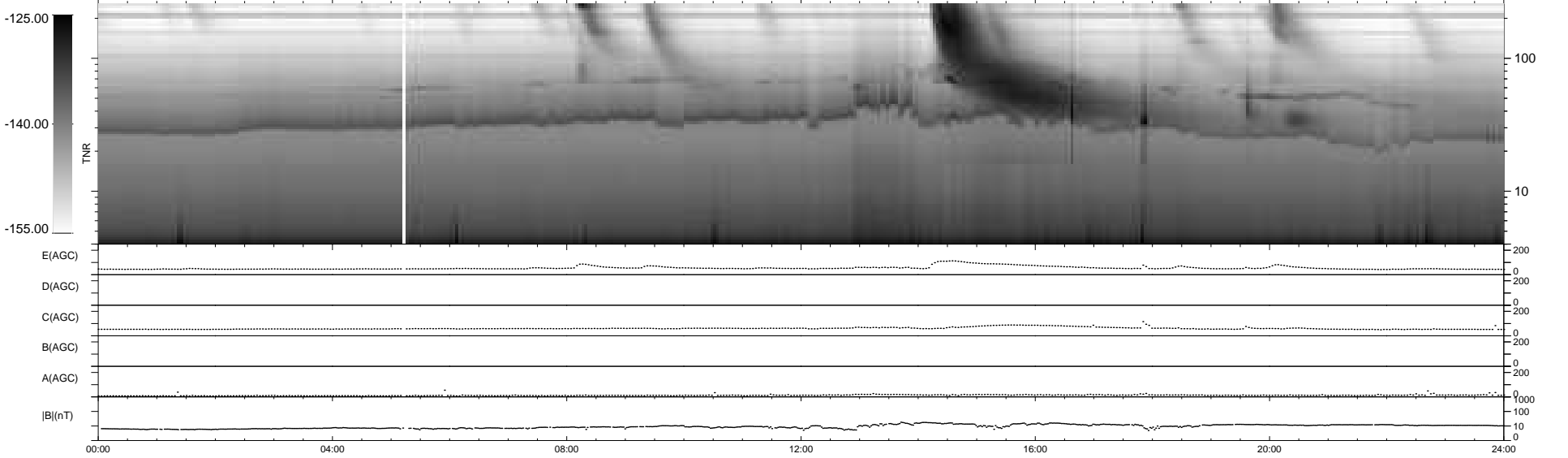
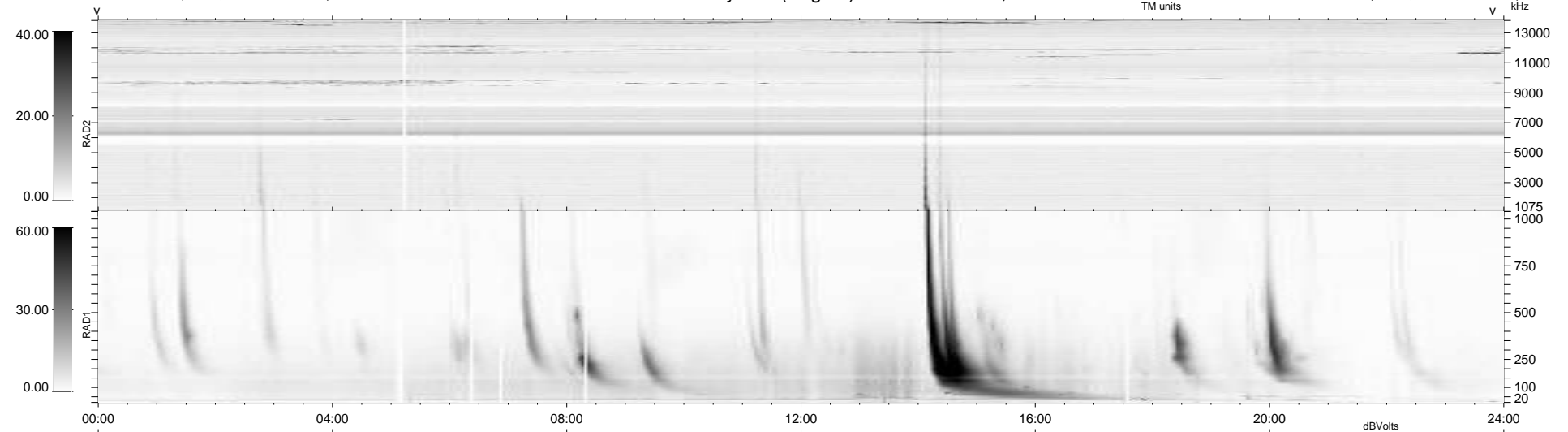
25 bad + 914 good MF/939MF projected (97%) - 0 missing MFs  
 Avg interval = 180 secs  
 Re = -203.28 (202.01, -15.48, -16.55 GSE)

windlib 2.0b

LZ version = v01

### WIND/WAVES Summary Plot (Page 1) for 18-JUL-2013, DOY = 199

DAILY 2013-07-19 21:46:03  
 Re = 202.85 (201.81, -11.95, -16.79 GSE)



RAD2  
 Antenna Ey  
 Mode LIN(1)  
 SUM/SEP SEP  
 Toggle OFF

RAD1  
 Antenna Ex  
 Mode LIS(2,4)  
 SUM/SEP SUM  
 Toggle OFF

TNR  
 Antenna ExEy  
 Mode A-32  
 Sweep ACE